

800t crawler crane ZCC9800W

ZOOMLION

Zoomlion Heavy Industry Science & Technology Co.,Ltd.

Add: No.677, Lugu Road, Zoomlion Industrial Park, Changsha, Hunan, China, 410205
Copyright©2020 Zoomlion. All rights reserved. Reproduction and copying of any part of contents is not allowed for any purposes without Zoomlion's approval.



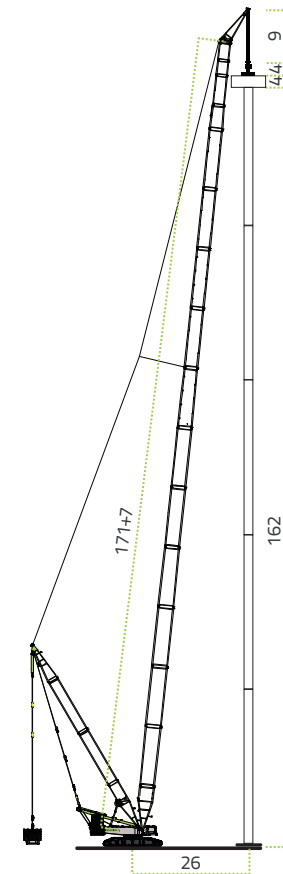
Product specifications are subject to change without notice and obligation. The photographs and/or drawings in this document are for illustrative purposes only. Please consult your local ZOOMLION dealer for more information.
website:en.zoomlion.com 2020.07.29

ZOOMLION

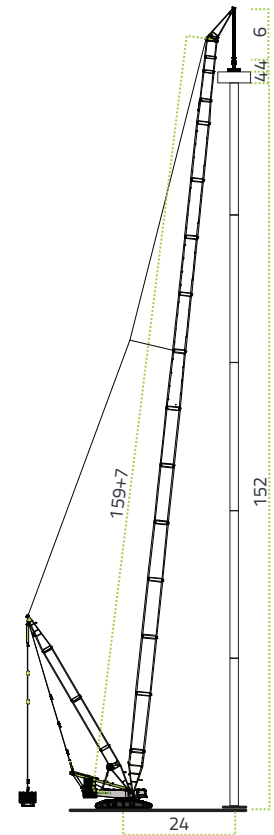
4.0
PRODUCTS

ZOOMLION
ZCC9800W

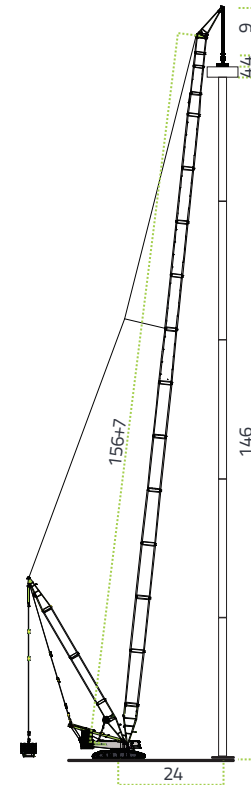




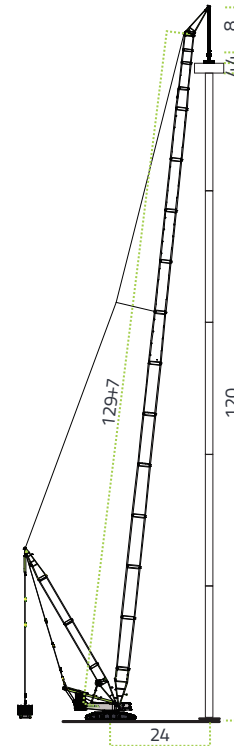
2MW Wind Power Turbine



2.65 MW Wind Power Turbine



3MW Wind Power Turbine



4MW Wind Power Turbine

Wind Power Turbine Type	Turbine Weight	Real lifting Weight	Max. Lifting Height (Turbine Vertical Height)	Boom Combination (Max. Lifting Weight)
2MW	85T	95T	162M	171+7M (112T)
2.65MW	115T	126T	152M	159+7M (147T)
3MW	125T	136T	146M	156+7M (157T)
4MW	140T	152T	120M	129+7M (180T)

CONTENTS

ZCC9800W	ZOOMLION CRAWLER CRANE	01/02
ZCC9800W	1.DIMENSIONS AND MAIN TECHNICAL PARAMETERS	03/09
	1.1 Main Technical Parameters	04
	1.2 Super Boom Working Condition	05
	1.3 Working Condition Combination Description	06
	1.4 Technical Description	08
ZCC9800W	2.MAIN TRANSPORT PARTS SHAPE AND QUALITY	10/18
ZCC9800W	3.LIFTING PERFORMANCE	19/58
	3.1 Standard Main Boom Lifting Performance	20
	3.2 Standard Light Boom Lifting Performance	21
	3.3 Superlift Main Boom Lifting	23
	3.4 Superlift Light Boom Lifting Performance	27
	3.5 Standard Light Boom + Wind Power Jib Lifting Performance	29
	3.6 Superlift Power Boom + Wind Power Jib Lifting Performance	31
	3.7 Superlift Power Boom Booster + Wind Power Jib Lifting Performance	36
	3.8 Superlift Power Boom + Wind Power Jib Lifting Performance	38
	3.9 Luffing Jib	40
	3.10 Superlift luffing jib on main boom	49
	3.11 Superlift heavy fixed jib on main boom	57
ZCC9800W	4.MAIN CONFIGURATIONS AND SUPPLIERS	59





ZOOMLION CRAWLER CRANE WIND POWER LIFTING EXPERT-ZCC9800W

EXCELLENT LIFTING PERFORMANCE

- Pioneered with super-long, multi various widths boom combinations
- Power boom booster working mode reaches **171M+7M**
- Normal boom working mode reaches **159M+7M**
- Max. lifting height reaches **180M**

FAST, EASY ASSEMBLY & DISASSEMBLY, TRANSPORT

- Max. weight of a single part is within **44T**, conform to transport regulation globally.
- Unique design wind jib, modular & light weight design, 171M+7M combination can be assembled within **24 hours**

INTELLIGENT FUNCTION & SERVICE

- Intelligent management system can remote monitor the crane status, malfunction self-diagnosis, abnormal condition warning, maintenance and so on. (optional for oversea market)

SUPERIOR OPERATING PERFORMANCE

- Excellent **micro - positioning** enables wind turbine installation with high accuracy.
- High efficiency, compound operations for multi-mechanisms.

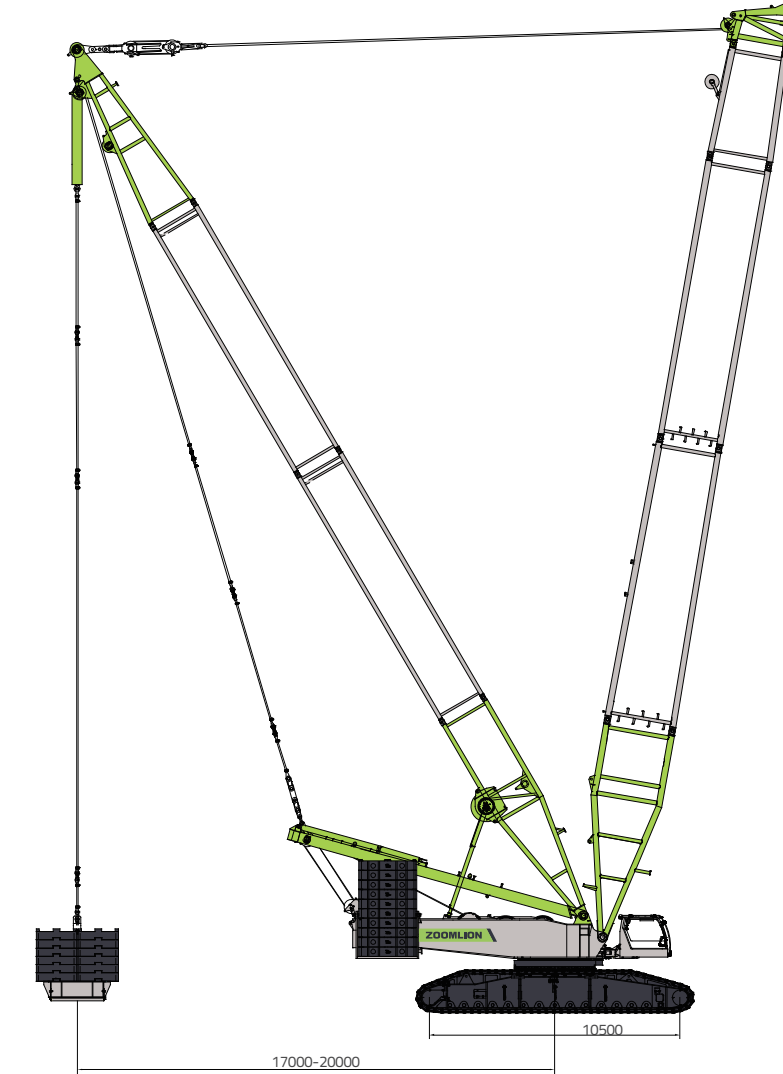
1.1 MAIN TECHNICAL PARAMETERS

Item	Parameter
Max. lifting moment	t×m
	11000
Basic S boom	Max. lifting capacity × radius t×m
	600×7
	Length of heavy boom m
39~93	
Length of light boom m	72~114
Superlift S boom	Max. lifting capacity × radius t×m
	650×14(Suspended ballast of 300t) 800×9(Suspended ballast of 400t)
	Length of heavy boom m
39~141	
Length of light boom m	90~150
Derrick boom	Length of derrick boom m
42	
SLHS	Max. lifting capacity × radius t×m
	180×16
	Length of SLHS boom head m
7	
Main boom length m	90~114
SLHSDB-1	Max. lifting capacity × radius t×m
	180×28
	Length of SLHSDB-1 boom head m
7	
Main boom length m	108~159
SLHSDB-2	Max. lifting capacity × radius t×m
	180×26
	Length of SLHSDB-2 boom head m
7	
Main boom length m	147~171
SWDB/SWD	Max. lifting capacity × radius t×m
	325×22
	Luffing jib length m
	30~96
Length of main boom with jib on m	63~99
Main boom angle °	85、75、65
SFvDB/SFvD	Max. lifting capacity × radius t×m
	360×24
	Jib angle °
	15
Jib length m	18
Length of main boom with jib on m	63~111
SW	Max. lifting capacity × radius t×m
	221×16
	Luffing jib length m
	24~84
Length of main boom with jib on m	39~63
Main boom angle °	85、75、65
SLHSDB-3	Max. lifting capacity × radius t×m
	270×32
	Length of SLHSDB-3 boom head m
5.5	
Main boom length m	108~138

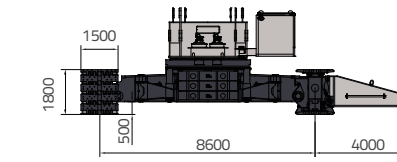
Item	Parameter
Mechanisms I and II of the primary hoisting winch	Speed of a single rope of the outermost layer on the winch m/min
	130
	Wire rope diameter mm
28	
Tension of a single rope KN	160
Hoisting mechanism of the tip boom	Speed of a single rope of the outermost layer on the winch m/min
	130
	Wire rope diameter mm
28	
Tension of a single rope KN	160
Primary derricking mechanism	Speed of a single rope of the outermost layer on the winch m/min
	56×2
	Wire rope diameter mm
28	
Tension of a single rope KN	160
Superlift derricking mechanism	Speed of a single rope of the outermost layer on the winch m/min
	130
	Wire rope diameter mm
28	
Tension of a single rope KN	160
Slewing speed rpm	0~0.7
Traveling speed km/h	0.6/1.0
Max. Gradeability %	30
Total weight for the basic operating mode t	520
Max. transport weight of a single piece t	44
Weight of suspended ballast t (Central slewing radius m)	300(400 for option)(17、20)
Rear counterweight t	190(210)
Central counterweight t	60
Benz engine	Model
	OM502LA.E3A/3
	Rated power/ rotational speed kW/rpm
420/1800	
Max. output torque Nm	2700/1300
Cummins engine	Model
	Q5X15-C560
	Rated power/ rotational speed kW/rpm
418/1800	
Max. output torque Nm	2542/1400
Distance between track center × Crawler contact length × Crawler width mm	8600×10500×1500

1.2 OVERALL DIMENSIONS OF SUPERLIFT S BOOM

Basic machine with undercarriage

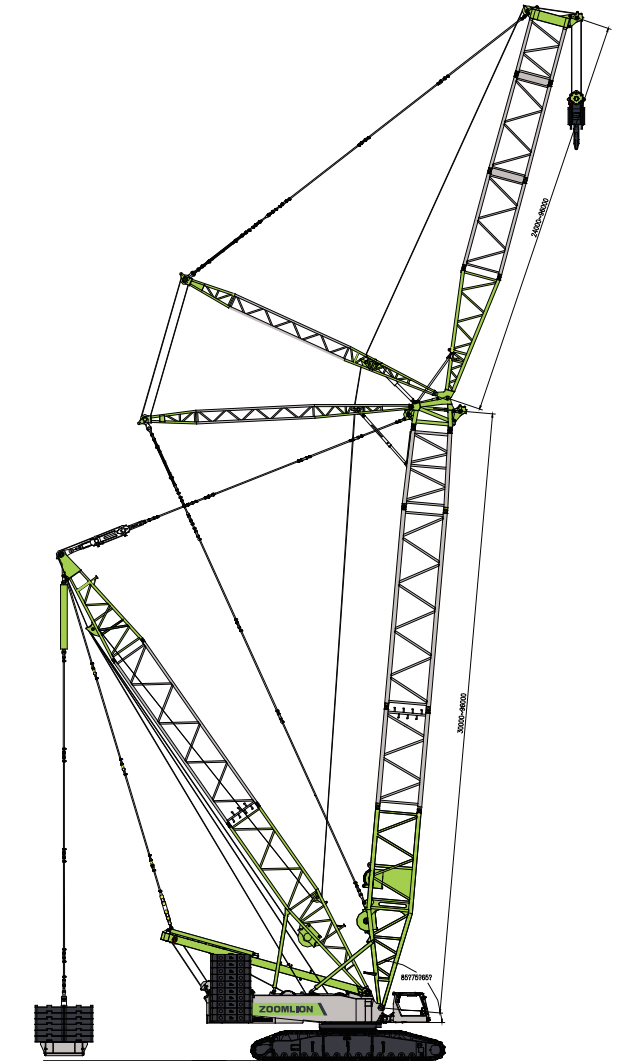


A view (crane with boom removed)



Overall Dimensions of Superlift S Boom

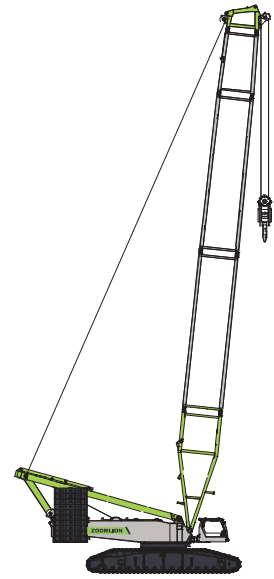
Overall dimensions of SWDB mode



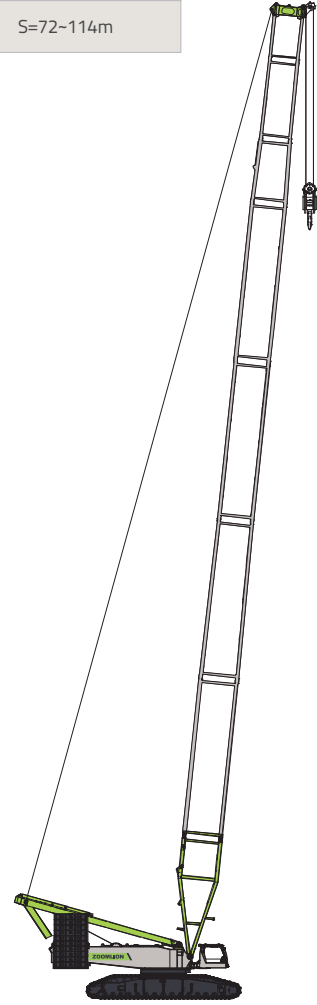
1.3 BOOM / JIB COMBINATIONS

WORKING MODE

Code of working mode	Mode	Working parameter
S	Standard main boom	S=39-93m
SL	Standard light boom	S=72-114m

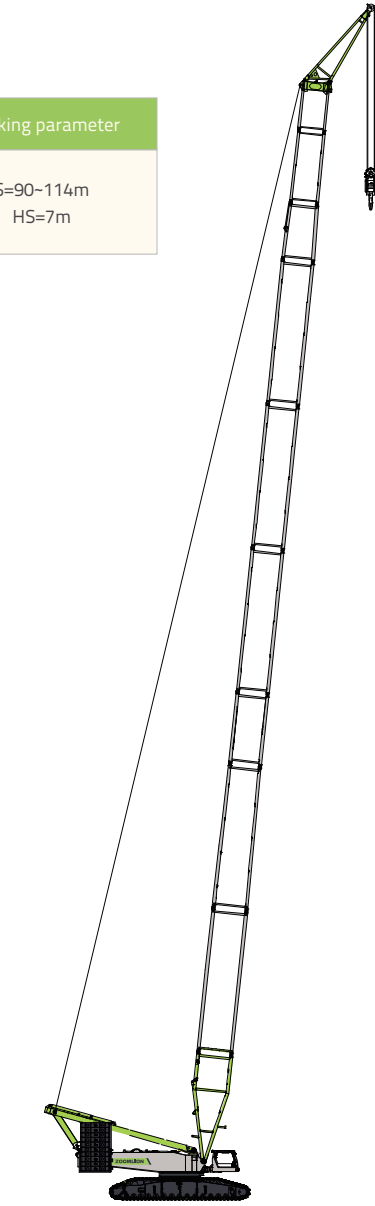


Working Mode S,
Standard main boom



Working Mode SL,
Standard light boom

Code of working mode	Mode	Working parameter
SLHS	Standard light boom + wind power jib	S=90-114m HS=7m



Working Mode SLHS,
Standard light boom + wind power jib

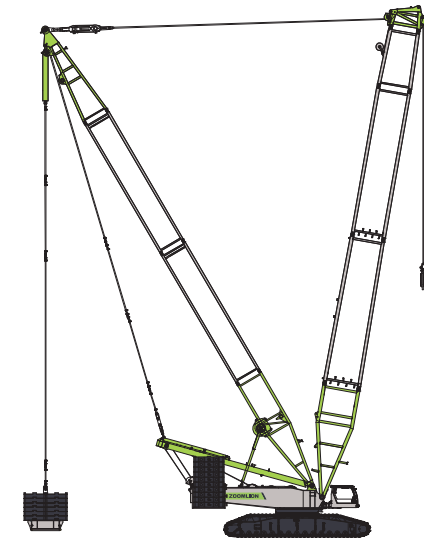
1.3 BOOM / JIB COMBINATIONS

WORKING MODE

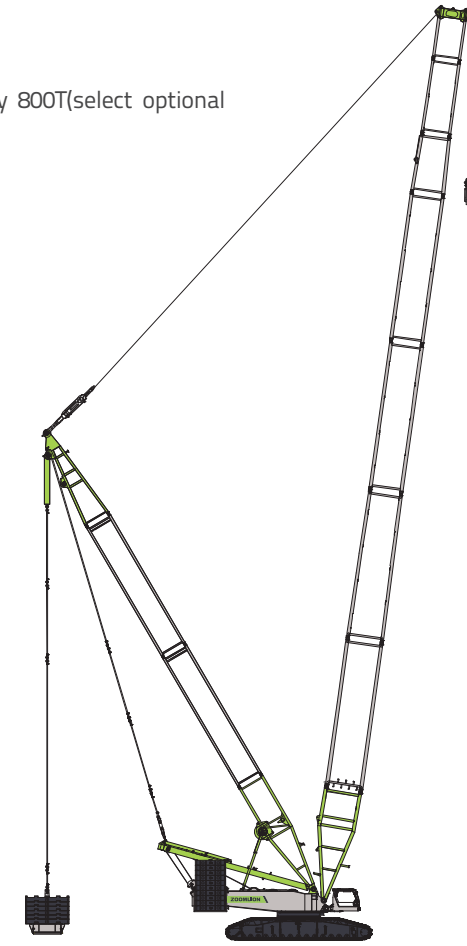
Code of working mode	Mode	Working parameter
SDB-1/2	Superlift main boom	S=39-141m
SLDB	Superlift light boom	S=90-150m

REMARKS:

SDB-1 Max.lifting capacity 650T;
SDB-2 is optional mode ,Max. lifting capacity 800T(select optional 400T superlift counterweight)



Working Mode SDB-1/SDB-2,
Superlift main boom

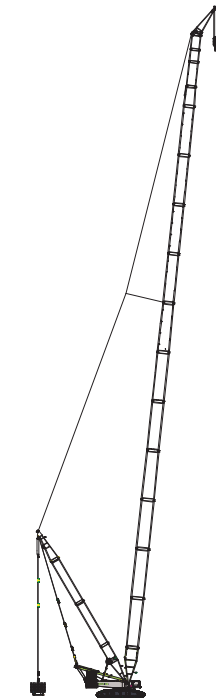


Working Mode SLDB,
Superlift light boom

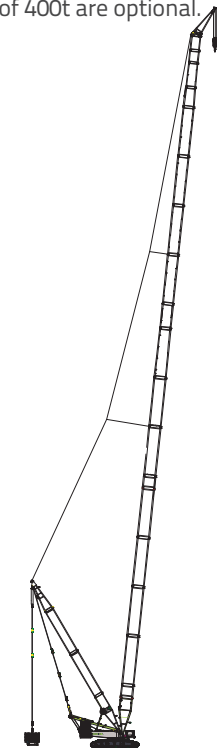
Code of woring mode	Mode	Working parameter
SLHSDB-1	Jib on superlift main boom for wind plant (power boom)	S=108~159m HS=7m
SLHSDB-2	Jib on superlift main boom for wind plant (power boom, with an ultra-wide boom)	S=147~171m HS=7m
SLHSDB-3	Jib on superlift main boom for wind plant (power boom, 270t)	S=108~138m HS=5.5m

Note:

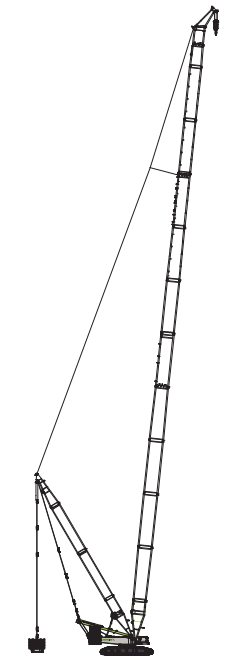
SLHSDB-2 is an optional operating mode. An ultra-wide boom of 54m and suspended ballast of 400t are optional.



Working Mode
SLHSDB-1



Working Mode
SLHSDB-2

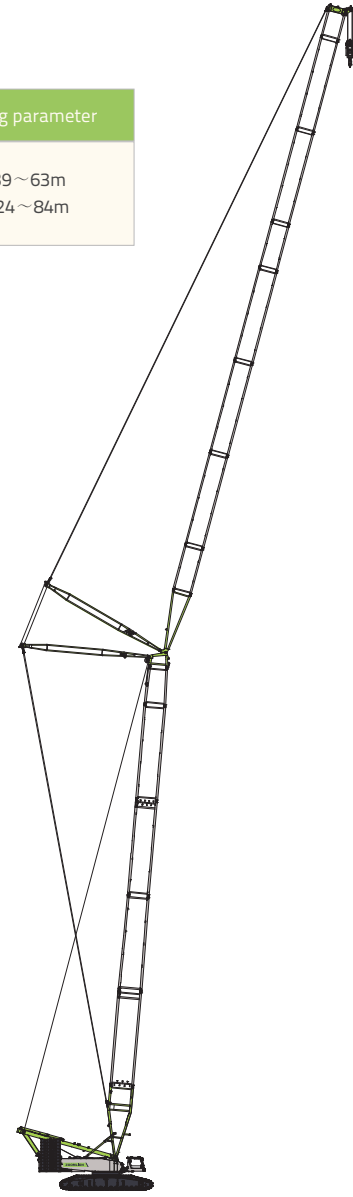


Working Mode
SLHSDB-3

1.3 WORKING CONDITION COMBINATION DESCRIPTION

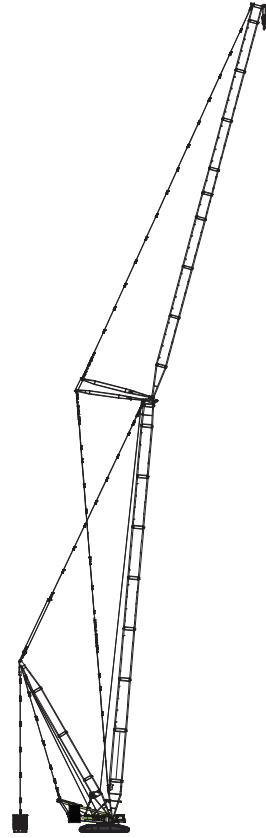
WORKING MODE

Code of working mode	Mode	Working parameter
SW	Luffing jib on heavy main boom	S=39~63m W=24~84m

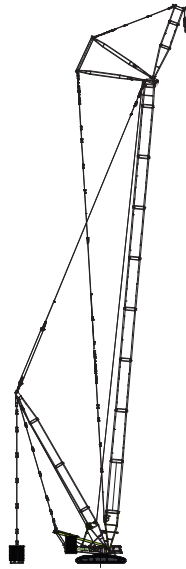


Working Mode SW
Luffing jib

Code of working mode	Mode	Working parameter
SWDB/SWD	Superlift luffing jib on main boom (with derrick boom and suspended ballast)	S=63~99m W=30~96m
SFvDB/SFvD	Superlift heavy fixed jib (with derrick boom and suspended ballast)	S=63-111m Fv=18m



Working Mode SWDB/SWD
Luffing jib + Superlift system



Working Mode SFvDB/SFvD
Heavy-duty fixed jib + Superlift system

1.4 TECHNICAL DESCRIPTION



Engine

Engine type—Imported Benz electronic fuel injection engine with CAN bus interface
 Rated output power—420kw, 1800r/min
 Maximum output torque —2700 Nm/1300 rpm
 Fuel tank — 700 L
 Exhaust emissions —U.S. EPA Tier 3 and EU Stage III
 Optional engine:
 Imported Cummins engine QSX15-C560
 Rate output power—418kW, 1800 r/min
 Maximum output torque – 2542Nm / 1400 rpm



Hydraulic system

The hydraulic system is composed of main pump, control valve, hydraulic motor, hydraulic oil tank, oil cooler and so on.
 International advanced pump-control technology is applied in the hydraulic system.
 Main hydraulic elements such as pump, motor and main control valve, imported from Germany, are energy-saving, reliable and long in service life.
 Main hydraulic pump: variable displacement piston pump, driven by engine
 The oil source of auxiliary mechanism is supplied by constant pressure pump and tandem gear pump.
 Main control valve: pilot electro-hydraulic control valve
 Main circuit is controlled by pump-control system and control levers.
 Auxiliary mechanism is controlled by solenoid directional control valve block, which is fitted with an overflow valve.
 The support cylinder is wireless remotely controlled.
 Hydraulic oil tank — 940 L
 Oil filter in hydraulic system: oil return line filter and fine filter for control oil line
 Oil cooler for hydraulic system: an aluminium cooler and cooling fan driven by hydraulic motor



Hoisting winches 1 and 2

The hoisting winches 1 and 2 are composed of imported axial piston variable displacement motor, balance valve, reducer, normally closed brake as well as wire rope. And they are controllable independently. If two hoisting ropes are reeved on one load hook, winch synchronization is used to synchronize the hoisting winch 1 and hoisting winch 2, thus keeping the load hook in horizontal position all the time.
 The hoisting rope is a kind of rotation resistant wire rope imported from Germany.
 Both hoisting winches 1 and 2 have two kinds of hoisting speed, which can improve the working efficiency dramatically.

Winch	Rope diameter	Rope length	Single rope force	Rope speed on the outmost rope layer
Hoisting winch 1	28mm	1100m	16t	130m/min
Hoisting winch 2	28mm	1100m	16t	130m/min
Aux Hoisting winch	28mm	320m	16t	130m/min



Boom derricking winches

The Boom derricking winches are composed of imported axial piston constant motor, balance valve, reducer and normally closed brake as well as wire rope.
 Normally closed brake is adopted to make boom winch work independently. The boom winches have self-lock function. When control lever is returned to neutral position, the winding drum of boom winch will be locked by the brake automatically.
 There are two kinds of working radius for suspended ballast. When the crane is working with a light load, the suspended ballast can be lifted off the ground via a special adjusting device, thus allowing the crane to slew and move freely.
 The derricking rope is a kind of rotation resistant wire rope imported from Germany.

Winch	Rope diameter	Rope length	Single rope force	Rope speed on the outmost rope layer
Main boom derricking winch	28mm	680m	16t	2X56 m/min
Superlift derricking winch	28mm	1480m	16t	130m/min

1.4 TECHNICAL DESCRIPTION



Swing

The slewing mechanism of closed oil circuit, driven by two slewing gears, is composed of built-in axial piston constant motor, gear reducer, brake and pinion gear as well as slewing ring. The slewing mechanism has controllable free swing function, which can reduce the impacts on the crane and ensure that the slewing movements can be initiated /stopped more stably. Imported 3-row roller type, external-gearred slewing ring and slewing reducer are of strong load-carrying capacity and high precision, which can ensure stable and accurate slewing movements.

A mechanical locking device will be triggered to lock slewing mechanism during assembly, dismantling, and transportation of the crane.

infinitelyvariable Slewing speed -----0 - 0.7r/min.



Crawler

There are two hydraulic motors and two traveling reducers fitted in each traveling mechanism.

The hydraulic motors, traveling reducers and balance valves are all imported from Germany. Using control levers, the traveling movements can be controlled, such as traveling straight ahead/backwards, turning with a crawler, differential steering, turning on spot, and traveling with a load.

When the crane has traveled for 20m, its deviation is less than and equal to 25cm. Additionally, the crane has high maneuverability. There are three kinds of traveling speed for the crane: high speed, low speed and inching speed. Each speed can be infinitely adjusted to ensure stable traveling movements.

The track pads and track rollers are made of alloy steel, which meets the requirements in JB5318 standard.

Traveling speed -----0.6/1.0 km/h

Gradeability -----30%



Operator's cab

All-steel cab, which is spacious and comfortable, can be tilted and swiveled. The floor is covered with rubber plates, which are non-flammable and non-skid, and can not conduct the electricity. The noise level in the cab is less than 85dB.

The cab is equipped with control devices, detecting instruments and closed-circuit monitoring system. The LCD screens are adjustable, and have two kinds of visual modes: daylight mode and night mode. All instruments, LCD screens, switches and control levers are outfitted with indicating icons, operating instructions and work limit conditions.

The cab is also fitted with adjustable seat, DVD player, cooling & heating device, interphone, alarms, fire extinguisher and other safety devices.

The wiper, tricolor warning light and working floodlights are installed outside the cab.



Load hook

Rotatable load hook with safety catches:

800T load hook: 26 pulleys, used for crane operation with main boom

650T load hook: 24 pulleys, used for crane operation with main boom

400T load hook: 15 pulleys, used for crane operation with main boom

300T load hook: 12 pulleys, used for crane operation with Luffing jib

250T load hook: 10 pulleys, used for crane operation with Luffing jib

100T load hook: 4 pulleys, used for crane operation with fixed jib

50T load hook: 2 pulleys, used for crane operation with fixed jib

16T load hook: cylindrical load hook

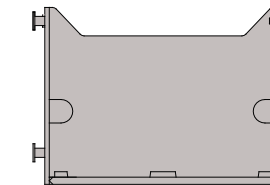
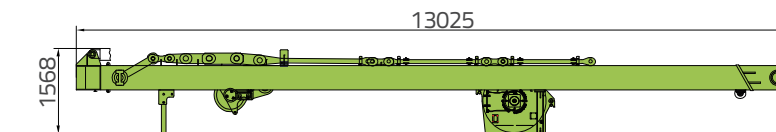
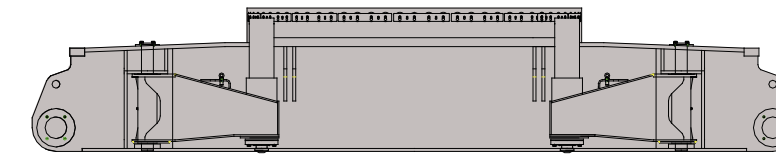
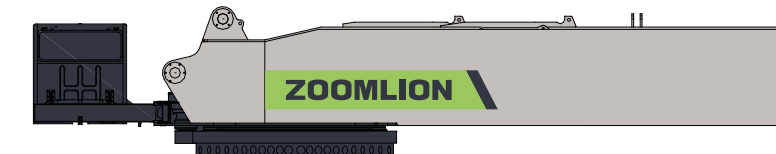
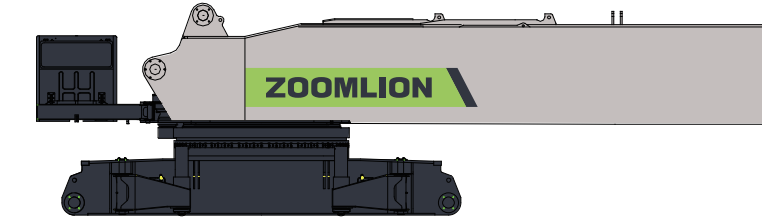
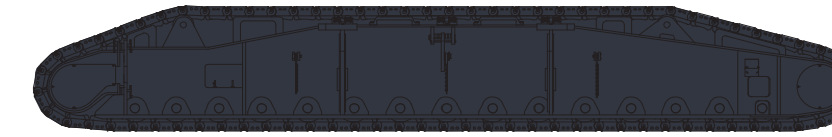


Operating weight

The operating weight includes the basic machine with crawlers, 2 main winches including wire ropes (1100m and 1100m) and 39m main boom, consisting of A-frame, 210t rear counterweight, 60t carbody counterweight, and 650t hook block.

Total weight-----approx.520t

2.1 TRANSPORT DIMENSIONS AND WEIGHT



Crawler

Length	11600 mm
Width	1500 mm
Height	1800 mm
Weight	44 t

Basic machine(detachable A+B)

Length	13000 mm
Width	3400 mm
Height	3785 mm
Weight	71 t

Basic machine(detached A)

Length	13000 mm
Width	3400 mm
Height	2550 mm
Weight	40 t

Chassis frame(detached B)

Length	7730 mm
Width	3390 mm
Height	1470 mm
Weight	31 t

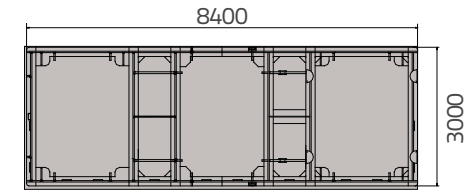
Mast assy(detachable)

Length	13025 mm
Width	2360 mm
Height	1568 mm
Weight	13.6 t

Counterweight Tray

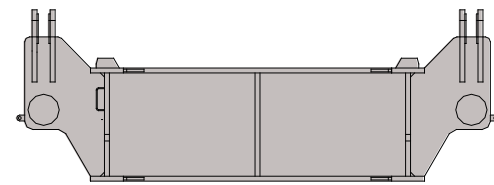
	2x
Length	2880 mm
Width	2050 mm
Height	1960 mm
Weight	5.3 t

2.1 TRANSPORT DIMENSIONS AND WEIGHT



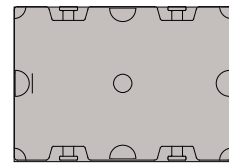
Superlift Counterweight Tray

Length	8400 mm
Width	3000 mm
Height	950 mm
Weight	10 t



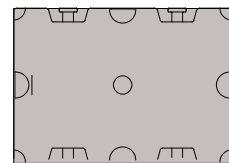
Detachable Counterweight Tray

Length	2930 mm
Width	2830 mm
Height	1015 mm
Weight	3.4 t



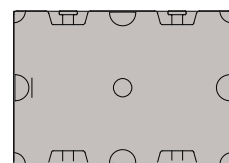
Counterweight(Optional)

Length	1700 mm
Width	2400 mm
Height	365 mm
Weight	5 t



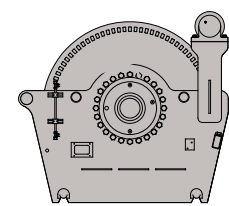
Counterweight(Optional)

Length	1700 mm
Width	2400 mm
Height	455 mm
Weight	10 t



Counterweight

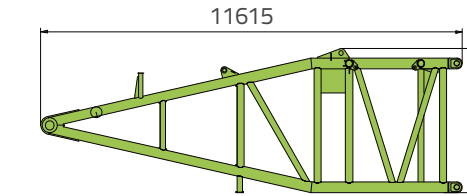
Length	1500 mm
Width	2000 mm
Height	595 mm
Weight	10 t



Hoisting winch

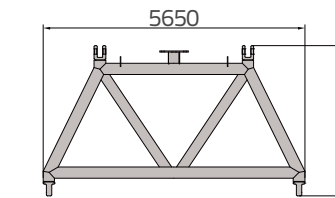
Length	1420 mm
Width	2100 mm
Height	1300 mm
Weight	6.8 t

2.1 TRANSPORT DIMENSIONS AND WEIGHT



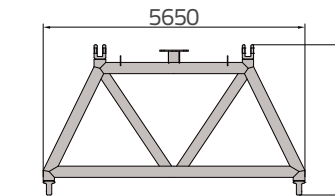
Main boom foot (G11)

Length	9325 mm
Width	3450 mm
Height	3205 mm
Weight	12 t



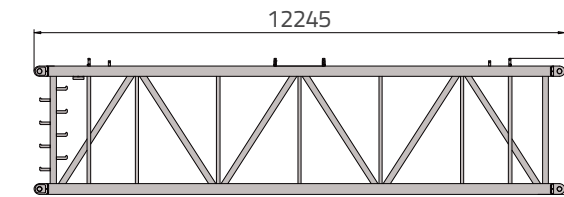
Power Boom Booster tapered mast A(Optional)G80

Length	5650 mm
Width	3220 mm
Height	3250 mm
Weight	5.8 t



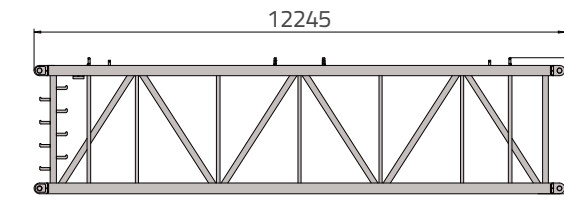
Power Boom Booster tapered mast B(Optional)G81

Length	5650 mm
Width	3220 mm
Height	3250 mm
Weight	5.8 t



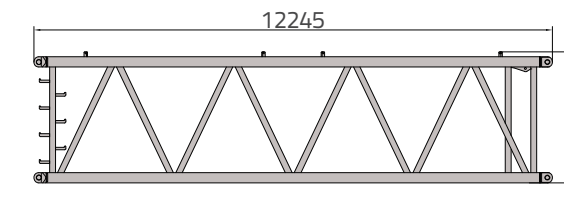
Power Boom Booster Section I(Optional)G82

Length	12245 mm
Width	2930 mm
Height	3200 mm
Weight	5.9 t



Power Boom Booster Section II(Optional) G83

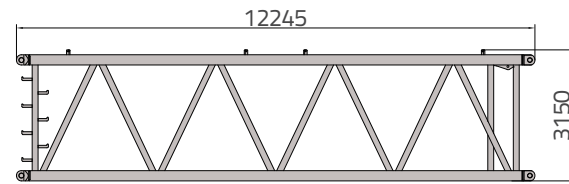
Length	12245 mm
Width	2930 mm
Height	3200 mm
Weight	5.9 t



Power Boom section I(Reinforcement rope) G66A

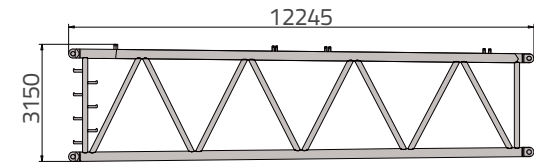
Length	12245 mm
Width	3450 mm
Height	3150 mm
Weight	10 t

2.1 TRANSPORT DIMENSIONS AND WEIGHT



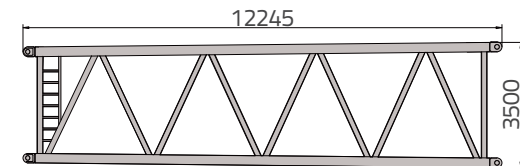
Power boom section I G66

Length	12245 mm
Width	3450 mm
Height	3150 mm
Weight	9.3 t



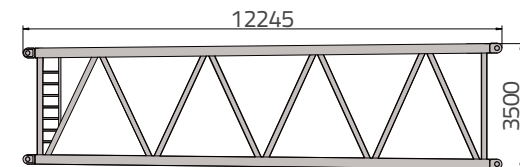
Power boom tapered mast section I B G65

Length	12245 mm
Width	3450 mm
Height	3150 mm
Weight	9.2 t



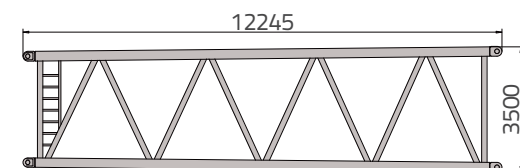
Power boom tapered mast section II A G67

Length	12245 mm
Width	3750 mm
Height	3500 mm
Weight	10 t



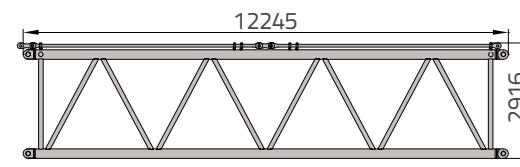
Power boom tapered mast section II B G68

Length	12245 mm
Width	3750 mm
Height	3500 mm
Weight	10 t



Power boom section II G69

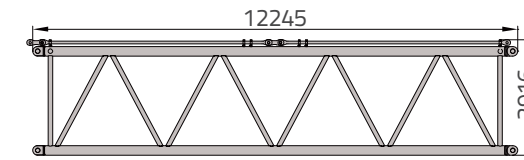
Length	12245 mm
Width	3750 mm
Height	3500 mm
Weight	10 t



12m Main boom section As G14As

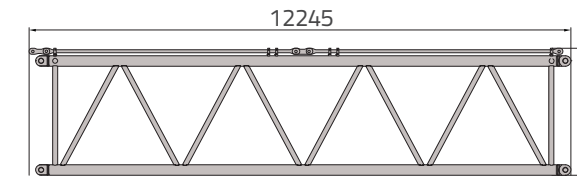
Length	12245 mm
Width	2950 mm
Height	2916 mm
Weight	8.4 t

2.1 TRANSPORT DIMENSIONS AND WEIGHT



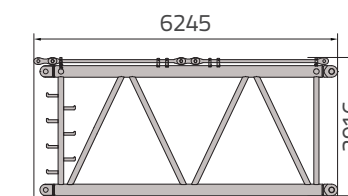
12m Main boom section B G14B

Length	12245 mm
Width	2950 mm
Height	2916 mm
Weight	7.2 t



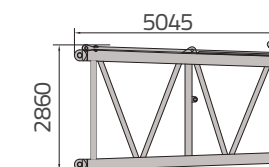
12m Main boom section C G14C

Length	12245 mm
Width	2950 mm
Height	2916 mm
Weight	6.7 t



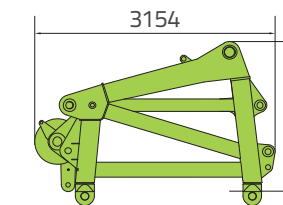
6m Main boom section G13

Length	6245 mm
Width	2950 mm
Height	2916 mm
Weight	6.85 t



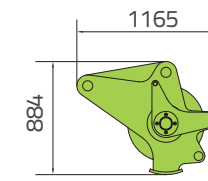
Main boom Top section G12

Length	5045 mm
Width	2950 mm
Height	2860 mm
Weight	3.8 t



650t Main boom head G62

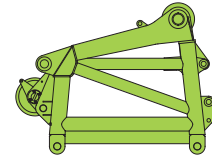
Length	2161 mm
Width	2860 mm
Height	3154 mm
Weight	4.5 t



650t Pully block assy G63

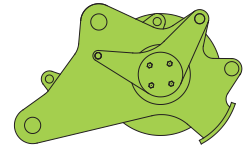
Length	1165 mm
Width	1660 mm
Height	884 mm
Weight	1.2 t

2.1 TRANSPORT DIMENSIONS AND WEIGHT



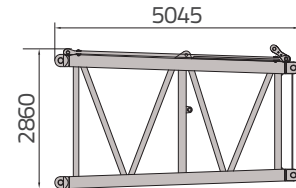
800t Main boom head(Optional)G61

Length	3120 mm
Width	2905 mm
Height	2385mm
Weight	7 t



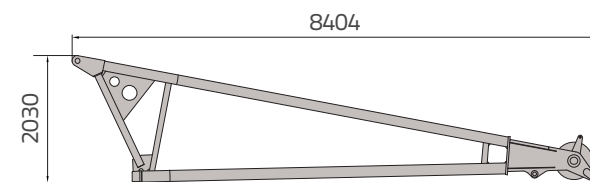
800t Pully block assembly(Optional)

Length	1120 mm
Width	1400 mm
Height	700 mm
Weight	1.6 t



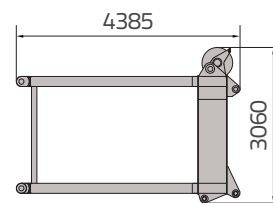
800t tapered mast G12A

Length	5045 mm
Width	2950 mm
Height	2860 mm
Weight	3.8 t



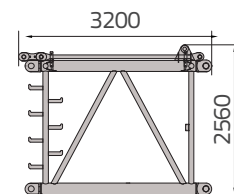
Wind power jib G19

Length	8404 mm
Width	1810 mm
Height	2030 mm
Weight	2.9 t



Luffing jib head G22

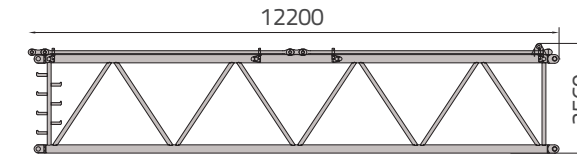
Length	4385 mm
Width	2550 mm
Height	3060 mm
Weight	3.9 t



3m Standard luffing jib section G23

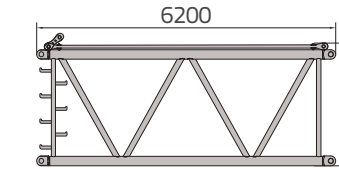
Length	3200 mm
Width	2550 mm
Height	2560 mm
Weight	1.76 t

2.1 TRANSPORT DIMENSIONS AND WEIGHT



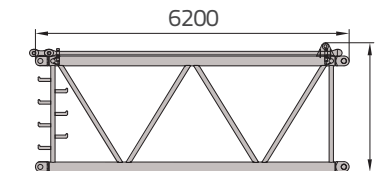
12m Heavy luffing jib section G26

Length	12200 mm
Width	2800 mm
Height	2560 mm
Weight	5.35 t



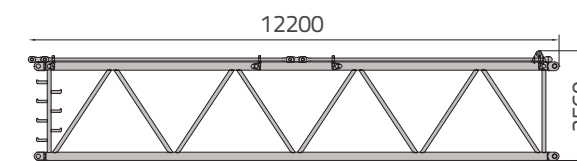
6m Heavy luffing jib section G30

Length	6200 mm
Width	2800 mm
Height	2545 mm
Weight	2.95 t



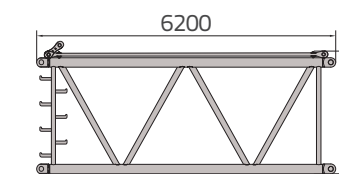
6m Standard luffing jib section G24

Length	6200 mm
Width	2550 mm
Height	2560 mm
Weight	2.85 t



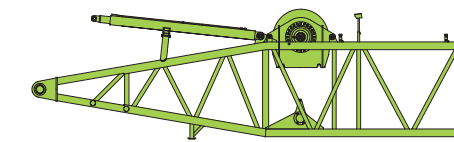
12m Standard luffing jib section G25

Length	12200 mm
Width	2550 mm
Height	2560 mm
Weight	5.15 t



Luffing jib tapered mast section G29

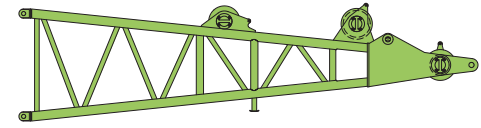
Length	6200 mm
Width	2800 mm
Height	2540 mm
Weight	2.9 t



Superlift mast foot G51

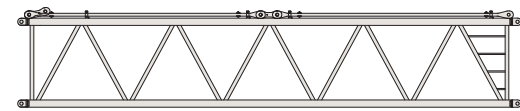
Length	10275 mm
Width	2780 mm
Height	2980 mm
Weight	15.5 t

2.1 TRANSPORT DIMENSIONS AND WEIGHT



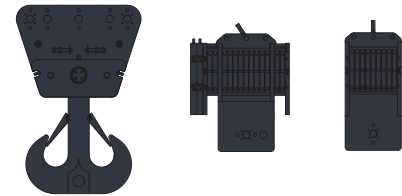
Superlift mast head G52

Length	8815 mm
Width	2900 mm
Height	2510 mm
Weight	8 t



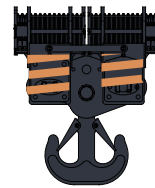
12m superlift mast section G55

Length	12180 mm
Width	2780 mm
Height	2440 mm
Weight	7.5t



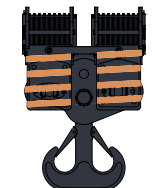
800t Hook(Optional)

Length	1990 mm
Width	1010 mm
Height	3015 mm
Weight	28t



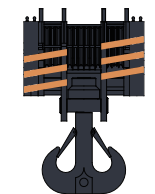
650t Hook(Optional)

Length	3040 mm
Width	2480 mm
Height	1430 mm
Weight	11 t



400t hook(Optional)

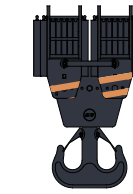
Length	2960 mm
Width	1970 mm
Height	1330 mm
Weight	9.1 t



300t hook(Optional)

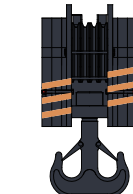
Length	2630 mm
Width	1750 mm
Height	1186 mm
Weight	6.9 t

2.1 TRANSPORT DIMENSIONS AND WEIGHT



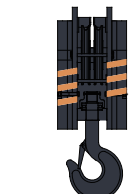
250t Hook(Standard)

Length	2730 mm
Width	1675 mm
Height	1120 mm
Weight	5.7 t



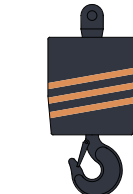
100t Hook(Optional)

Length	1970 mm
Width	970 mm
Height	806 mm
Weight	4.05 t



50t Hook(Optional)

Length	1970 mm
Width	700 mm
Height	806 mm
Weight	2.65 t



16t hook(Optional)

Length	1156 mm
Width	530 mm
Height	530 mm
Weight	0.9 t

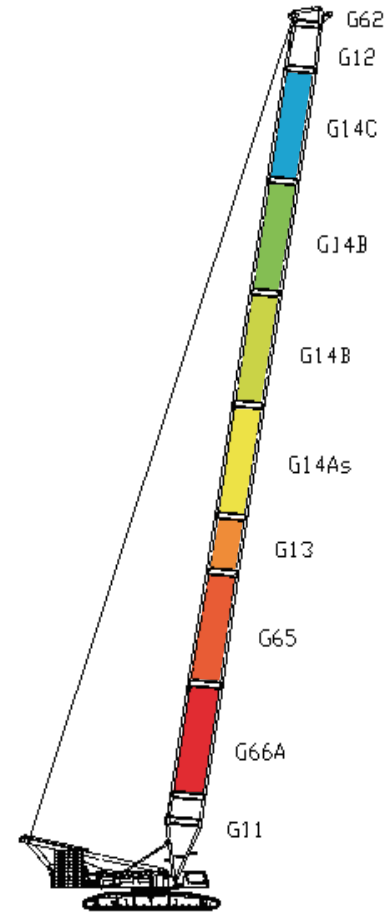
3.1 LIFTING PERFORMANCE

Standard Main Boom Lifting Performance (Working Mode:S)

Codes	Power Boom		Standard Boom			
	G66A	G65	G13	G14As	G14B	G14C
length(m)	12	12	6	12	12	12
39	1	1	-	-	-	-
45	1	1	1	-	-	-
51	1	1	-	1	-	-
57	1	1	1	1	-	-
63	1	1	-	1	1	-
69	1	1	1	1	1	-
75	1	1	-	1	2	-
81	1	1	1	1	2	-
87	1	1	-	1	2	1
93	1	1	1	1	2	1

Remark:

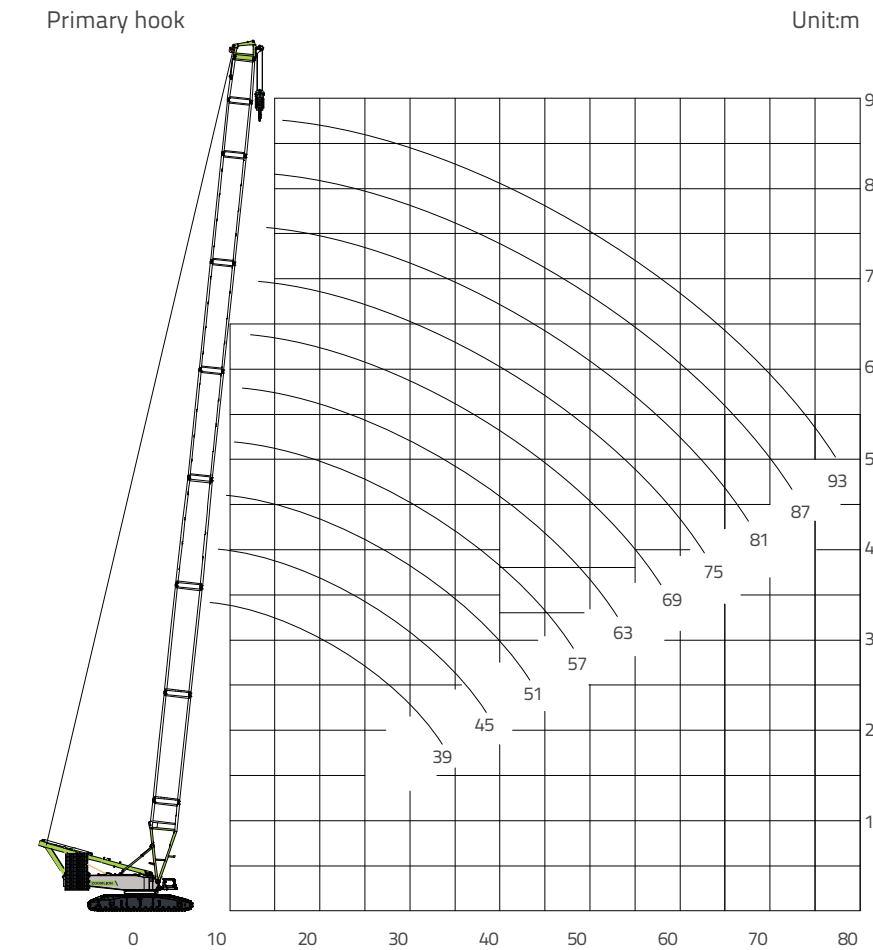
- This chart doesn't highlight main boom foot(G11-9m), main boom top section (G12-4.8m),heavy main boom head(G62-1.2m).
- superlift main boom(SDB-1)Consistent combination;



Standard main boom
Lifting combination S (39m-93m)

3.1 LIFTING PERFORMANCE

Standard Main Boom Lifting Performance (Working Mode:S)



Standard main boom
Lifting performance curve chart S (39m-93m)

Standard Main Boom Lifting Capacity Table										
Rear Counterweight:210t Car Body Counterweight:60t										
Boom Length(m)										
Radius(m)	39	45	51	57	63	69	75	81	87	93
7	600									
8	557	520								
9	479	452	428	405						
10	420	398	379	361	344	329				
11	374	356	340	325	311	297	285	274		
12	336	321	308	294	283	271	261	251	242	232
14	279	268	257	248	239	230	222	213	207	199
16	232	228	221	213	206	198	192	185	180	173
18	195	194	192	185	180	174	168	162	158	152
20	167	166	166	164	159	154	149	144	140	135
22	146	145	145	144	142	137	134	129	125	121
24	129	128	128	127	126	124	120	116	113	109
26	115	114	114	113	113	112	109	105	102	98.4
28	104	103	102	101	101	99.9	99.1	95.4	93	89.4
30	93.8	93.1	92.5	91.5	91.2	90.1	89.6	87.1	84.9	81.6
32	85.5	84.8	84.2	83.1	82.8	81.7	81.2	79.8	77.8	74.6
34	78.3	77.6	77	75.9	75.6	74.5	74	72.8	71.5	68.4
36	71.9	71.3	70.7	69.6	69.3	68.2	67.6	66.4	65.8	62.9
38		65.7	65.1	64.1	63.7	62.6	62	60.8	60.5	57.8
40		60.7	60.2	59.1	58.8	57.6	57.1	55.8	55.5	53.3
44			51.7	50.7	50.4	49.2	48.7	47.4	47	45.4
48				43.8	43.5	42.3	41.3	40.2	40.1	38.3
52					38	37.7	36.4	35.3	34.6	32.7
56						30.7	28.6	27.4	26.5	25.4
60							21.7	20.5	19.8	19.7
64								17.5	15.7	15.2
68									11.9	11.9
72									8.9	8.9

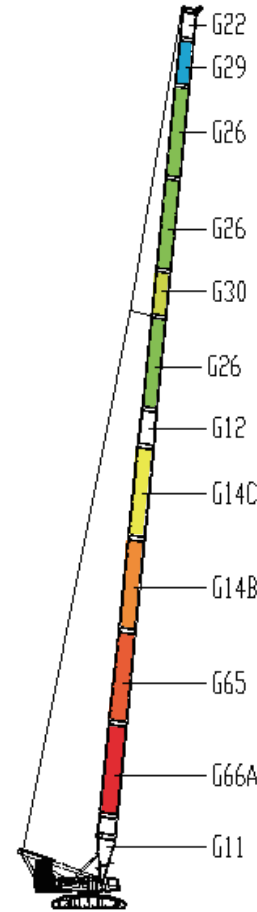
3.2 LIFTING PERFORMANCE

Standard Light Boom Lifting Performance (Working Mode: SL)

Codes	Power Boom		Standard Boom				light Boom	
	G66A	G65	G13	G14As	G14B	G14C	G26	G30
length (m)	12	12	6	12	12	12	12	6
72	1	1	-	1	1	-	-	-
78	1	1	1	1	1	-	-	-
84	1	1	-	1	1	1	-	-
90	1	1	1	1	1	1	-	-
96	1	1	-	1	2	1	-	-
102	1	1	1	1	2	1	-	-
108	1	1	-	1	1	1	2	-
114	1	1	-	-	1	1	3	1

Remark:

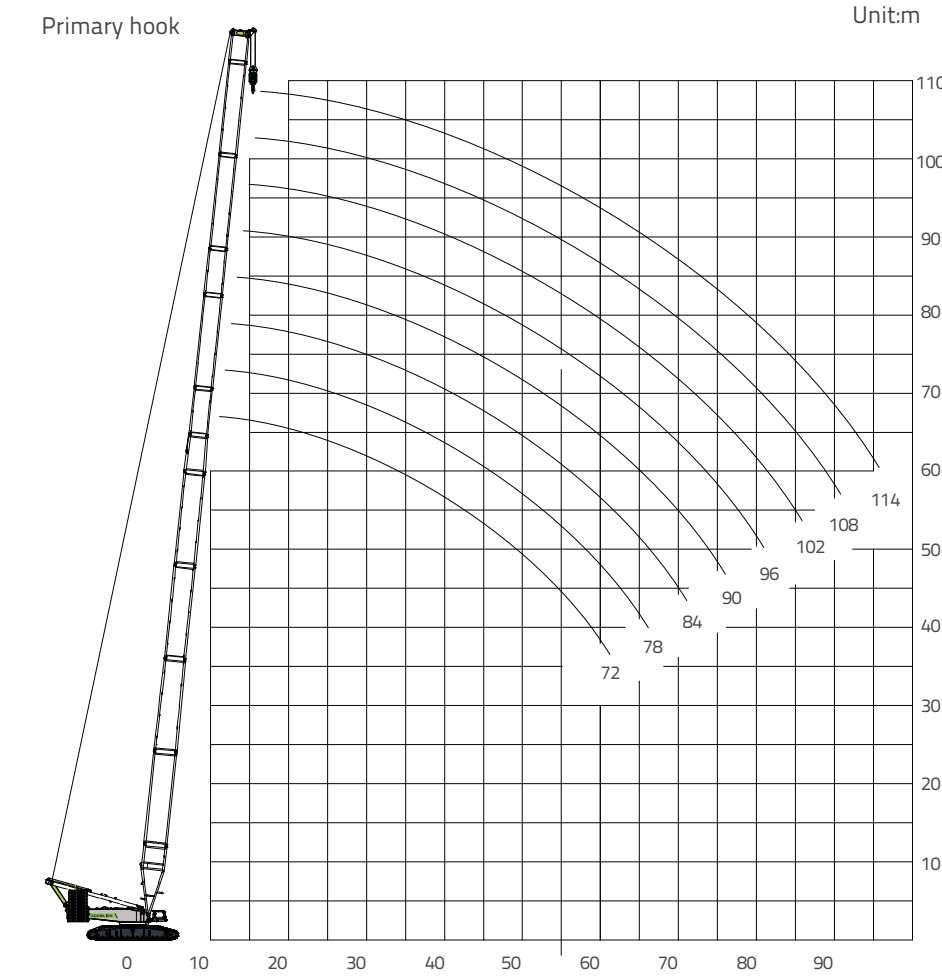
- This chart doesn't highlight main boom foot(G11-9m), main boom top section (G12-4.8m), luffing jib tapered section(G29-6m), luffing jib head (G22-4.2m).
- Standard light boom+ wind power jib(SLHS)consistent combination;



Standard light boom
Lifting combination SL (72m-114m+7m)

3.2 LIFTING PERFORMANCE

Standard Light Boom Lifting Performance (Working Mode: SL)



Superlift main boom Lifting performance curve chart SL (72m-114m)

Standard light Boom Lifting Capacity Table								
Rear Counterweight:210t Car Body Counterweight:60t								
Radius(m)	Boom Length(m)							
	72	78	84	90	96	102	108	114
11	330							
12	294	287	284					
14	243	236	233	228	210			
16	204	197	197	192	189	180	160	136
18	173	170	168	165	161	161	150	134
20	153	150	146	144	141	141	138	128
22	134	131	131	126	126	125	125	122
24	119	117	114	112	112	110	110	109
26	107	105	104	102	99.3	99.3	99.3	97.5
28	97.5	94.7	94.7	91.8	90.1	90.1	90.1	87.2
30	89	87.2	85.5	82.6	82.6	80.9	80.9	80.9
32	80.9	78	78	75.2	75.2	73.4	73.4	73.4
34	73.4	72.3	70.6	69.5	67.7	67.7	67.7	67.7
36	67.7	66	66	63.1	63.1	61.3	61.3	61.3
38	61.3	60.3	60.3	58.5	57.4	57.4	57.4	56.7
40	57.4	55.7	55.7	53.9	52.8	52.8	52.8	52.8
44	48.2	46.4	46.4	45.4	44.7	43.6	45.4	45.4
48	41.8	40.1	40.1	37.9	37.9	37.2	39	37.9
52	36.2	34.4	34.4	32.6	31.6	31.6	33.3	32.6
56	31.6	29.8	28.7	26.9	26.9	26.9	28	28
60	26.9	25.2	25.2	23.4	22.3	22.3	24.1	23.4
64	23.4	21.9	21.3	19.5	19.1	18.4	20.6	19.5
68		18.4	18.4	16.7	16	16	17.3	16.7
72			14.9	13.8	13.1	13.1	14.5	13.8
76				11.4	10.3	10.3	12.1	11.4

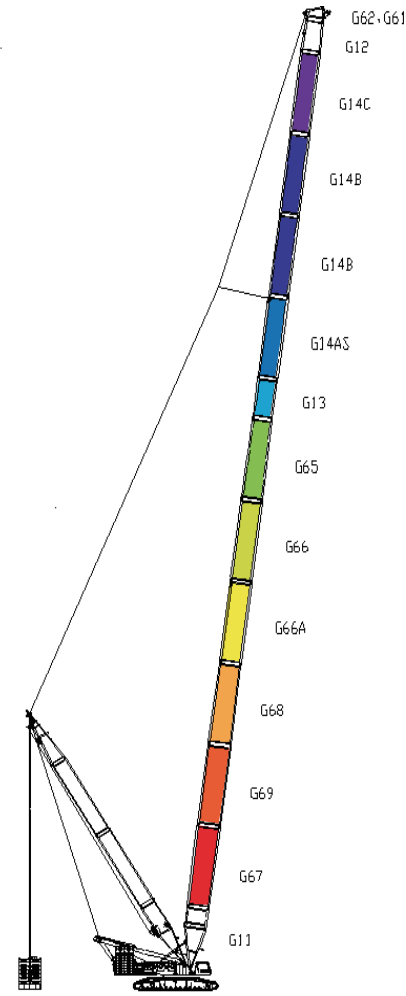
3.3 LIFTING PERFORMANCE

Superlift Main Boom Lifting Performance (Working Mode: SDB-1/ SDB-2)

	Power Boom II			Power Boom			Standard Boom			
Codes	G67	G69	G68	G66A	G66	G65	G13	G14As	G14B	G14C
length(m)	12	12	12	12	12	12	6	12	12	12
39	-	-	-	1	-	1	-	-	-	-
45	-	-	-	1	-	1	1	-	-	-
51	-	-	-	1	-	1	-	1	-	-
57	-	-	-	1	-	1	1	1	-	-
63	-	-	-	1	-	1	-	1	1	-
69	-	-	-	1	-	1	1	1	1	-
75	-	-	-	1	-	1	-	1	2	-
81	-	-	-	1	-	1	1	1	2	-
87	-	-	-	1	-	1	-	1	2	1
93	-	-	-	1	-	1	1	1	2	1
99	1	1	1	1	1	1	-	1	-	-
105	1	1	1	1	1	1	1	1	-	-
111	1	1	1	1	1	1	-	1	1	-
117	1	1	1	1	1	1	1	1	1	-
123	1	1	1	1	1	1	-	1	2	-
129	1	1	1	1	1	1	1	1	2	-
135	1	1	1	1	1	1	-	1	2	1
141	1	1	1	1	1	1	1	1	2	1

Remark:

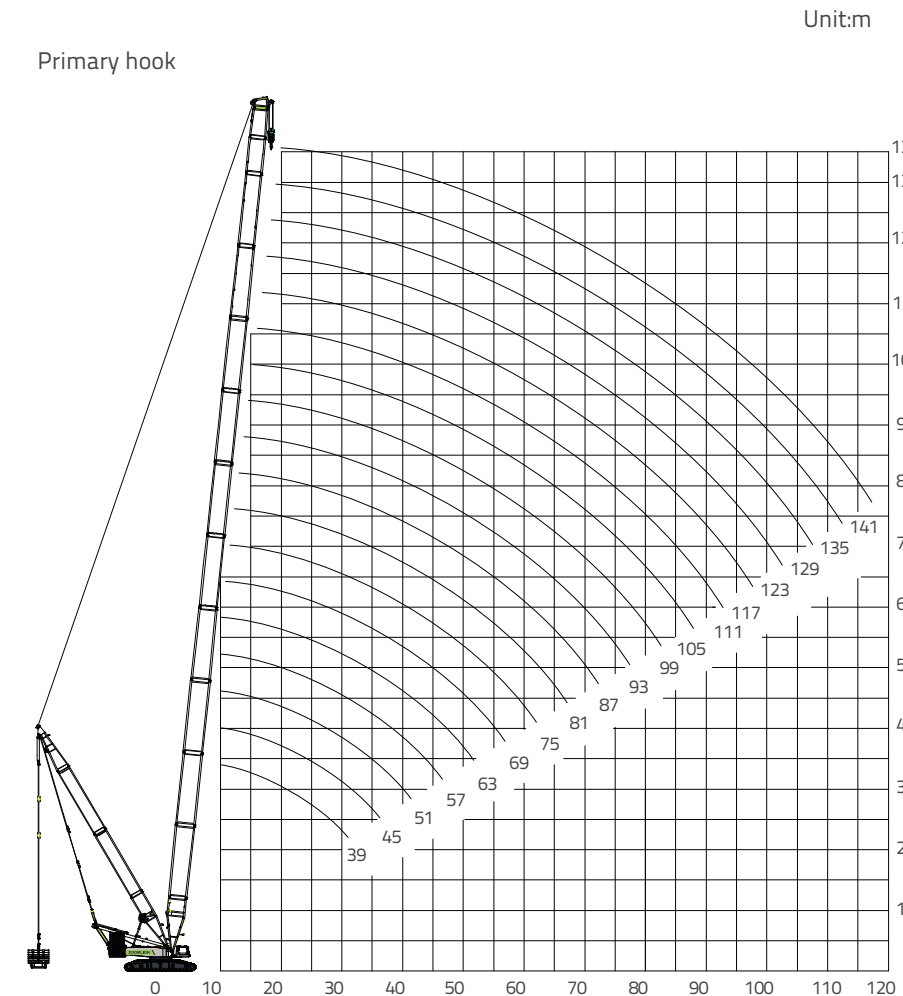
- This chart doesn't highlight main boom foot(G11-9m), main boom top section (G12-4.8m),heavy main boom head(G62/G61 - 1.2m).
- Boom combination and standard main boom(S)consistent combination;



Superlift main boom
Lifting combination SDB-1/2 (39m-141m)

3.3 LIFTING PERFORMANCE

Superlift Main Boom Lifting Performance (Working Mode: SDB-1/ SDB-2)



Superlift Main Boom
Lifting performance curve chart SDB-1/2 (39m-141m)

Superlift Main Boom SDB-1 Lifting Capacity Table									
SDB-1:Rear Counterweight:210t					Car body Counterweight:60t				
Superlift Radius:20m					Superlift Counterweight:300t				
Boom Length(m)	39	45	51	57	63	69	75	81	87
8	650	650							
9	650	650	647						
10	650	650	647	591	534				
11	650	650	647	591	534	476	416		
12	650	650	647	591	534	476	416	386	356
14	620	650	647	591	534	476	416	386	356
16	575	614	612	591	534	476	416	386	356
18	545	545	544	543	534	476	416	386	356
20	466	483	489	488	491	476	416	386	356
22	416	432	443	442	445	444	416	386	356
24	375	389	401	404	407	404	403	386	356
26	340	353	365	372	374	371	370	365	356
28	310	323	333	342	346	342	342	337	333
30	284	296	306	314	321	317	317	313	309
32	261	272	282	290	299	296	296	291	288
34	240	252	261	268	280	276	277	273	269
36		233	242	249	260	259	260	256	253
38		216	225	232	243	244	244	241	238
40		200	209	216	227	230	231	227	224
44			182	189	200	204	207	204	201
48				166	177	181	184	184	181
52					157	161	167	167	165
56					140	144	151	150	150
60						129	136	136	136
64							123	124	126
68								112	114
72									104
76									94

3.3 LIFTING PERFORMANCE

Superlift Main Boom Lifting Performance (Working Mode: SDB-1/ SDB-2)

Superlift Main Boom SDB-1 Lifting Capacity Table									
SDB-1:Rear Counterweight:210t Car body Counterweight:60t Superlift Radius:20m Superlift Counterweight:300t									
Boom Length(m)	93	99	105	111	117	123	129	135	141
Radius(m)									
14	325	294	278						
16	325	294	278	263	231	220			
18	325	294	278	263	231	220	204	178	160
20	325	294	278	263	231	220	204	178	160
22	325	294	278	263	231	220	204	178	160
24	325	294	278	263	231	220	204	178	160
26	325	294	278	263	231	220	204	178	160
28	325	294	278	263	231	220	202	176	158
30	304	294	276	263	231	220	200	174	156
32	284	279	268	263	231	220	198	172	154
34	265	261	258	254	231	220	196	170	152
36	249	245	241	238	231	220	195	168	150
38	234	230	226	224	220	218	194	167	149
40	221	217	213	211	208	205	193	166	148
44	198	194	191	189	185	183	180	165	147
48	178	175	172	170	167	165	161	160	145
52	162	159	155	154	151	149	146	144	141
56	148	144	142	140	137	135	132	131	128
60	134	131	129	128	125	123	120	119	116
64	123	121	119	117	115	113	110	109	106
68	114	112	109	108	105	104	101	99.7	97
72	103	102	100	99.5	96.9	95.4	92.7	91.5	88.9
76	94.8	94.8	92.8	92	89.4	88	85.3	84.2	81.6
80	86.2	86.3	86.3	84.2	82.7	81.3	78.7	77.6	75
84		78.6	78.8	77.7	75.7	75.2	72.6	71.6	69.1
88			71.6	72.4	70.4	69.6	67.1	66.1	63.6
92			64.9	66.3	65.9	63.9	62.1	61.1	58.6
96				60.2	60	59.9	57.4	56.5	54
100					54.3	55.1	53.1	52.2	49.8

Superlift Main Boom SDB-2 Lifting Capacity Table(Optional)									
SDB-2:Rear Counterweight:210t Car body Counterweight:60t Superlift Radius:20m Superlift Counterweight:400t									
Boom Length(m)	39	45	51	57	63	69	75	81	87
Radius(m)									
8	800	755							
9	800	755	647						
10	790	755	647	591	534				
11	785	750	647	591	534	476	416		
12	772	745	647	591	534	476	416	386	356
14	750	735	647	591	534	476	416	386	356
16	688	694	647	591	534	476	416	386	356
18	586	607	626	591	534	476	416	386	356
20	519	537	554	562	534	476	416	386	356
22	464	481	496	509	512	476	416	386	356
24	418	434	448	460	469	467	416	386	356
26	380	394	407	418	431	430	416	386	356
28	346	360	372	382	396	398	400	386	356
30	317	330	341	351	364	370	372	370	356
32	291	304	315	324	337	343	347	346	344
34	268	281	291	300	312	318	326	324	323
36		260	270	279	291	296	304	305	303
38		242	252	260	272	276	285	287	286
40		224	235	243	254	259	267	270	270
44			204	213	224	228	236	238	241
48				187	199	203	210	212	215
52					177	181	188	190	193
56					157	162	169	171	173
60						145	153	155	157
64							138	140	142
68								127	129
72									118
76									107

3.3 LIFTING PERFORMANCE

Superlift Main Boom Lifting Performance (Working Mode: SDB-1/ SDB-2)

Superlift Main Boom SDB-2 Lifting Capacity Table(Optional)									
SDB-2:Rear Counterweight:210t Car body Counterweight:60t Superlift Radius:20m Superlift Counterweight:400t									
Boom Length(m)	93	99	105	111	117	123	129	135	141
Radius(m)									
14	325	294	278						
16	325	294	278	263	231	220			
18	325	294	278	263	231	220	204	178	160
20	325	294	278	263	231	220	204	178	160
22	325	294	278	263	231	220	204	178	160
24	325	294	278	263	231	220	204	178	160
26	325	294	278	263	231	220	204	178	160
28	325	294	278	263	231	220	202	176	158
30	325	294	276	263	231	220	200	174	156
32	325	294	268	263	231	220	198	172	154
34	321	294	258	254	231	220	196	170	152
36	302	294	255	250	231	220	195	168	150
38	284	282	250	245	231	219	193	166	148
40	269	266	245	240	231	218	193	165	147
44	242	239	235	233	230	216	191	164	146
48	216	216	213	211	207	205	189	162	144
52	194	194	193	191	188	186	183	161	143
56	175	175	176	175	172	170	167	159	141
60	158	158	159	160	158	156	153	151	139
64	143	144	144	145	145	143	140	139	136
68	130	131	131	132	132	132	129	128	125
72	119	119	119	121	121	121	120	118	116
76	108	109	109	110	110	111	110	110	107
80	98.6	99.2	99.6	101	101	101	101	102	99
84		90.5	91	92.3	92.1	92.8	92.3	93	91.9
88			83	84.5	84.2	85	84.5	85.2	84.3
92			75.6	77.2	77	77.8	77.3	78	77.1
96				70.4	70.4	71.2	70.7	71.5	70.6
100					64.1	65.1	64.6	65.4	64.5

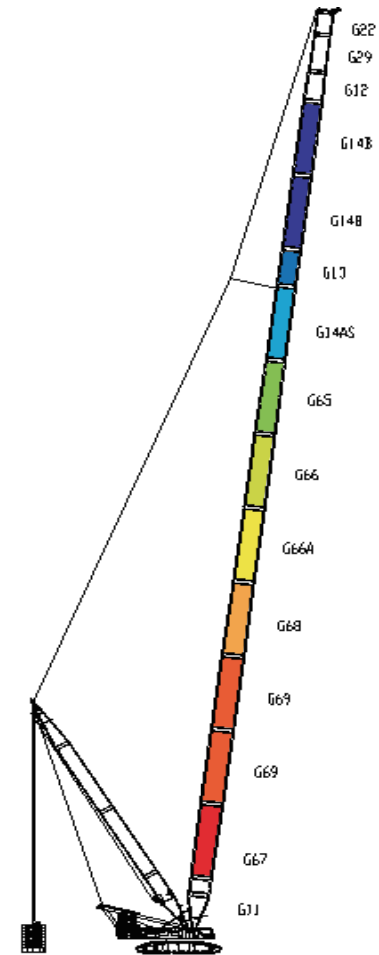
3.4 LIFTING PERFORMANCE

Superlift Light Boom Lifting Performance (Working Mode: SLDB)

Codes	Power Boom II			Power Boom			Standard Boom		
	G67	G69	G68	G66A	G66	G65	G13	G14As	G14B
Length(m)	12	12	12	12	12	12	6	12	12
90	1	1	1	1	1	1	1	1	-
96	1	1	1	1	1	1	-	1	-
102	1	1	1	1	1	1	1	1	-
108	1	1	1	1	1	1	-	1	-
114	1	1	1	1	1	1	-	1	1
120	1	1	1	1	1	1	-	1	1
126	1	1	1	1	1	1	-	1	1
132	1	1	1	1	1	1	-	1	2
138	1	1	1	1	1	1	1	1	2
144	1	2	1	1	1	1	-	1	2
150	1	2	1	1	1	1	1	1	2

Remark:

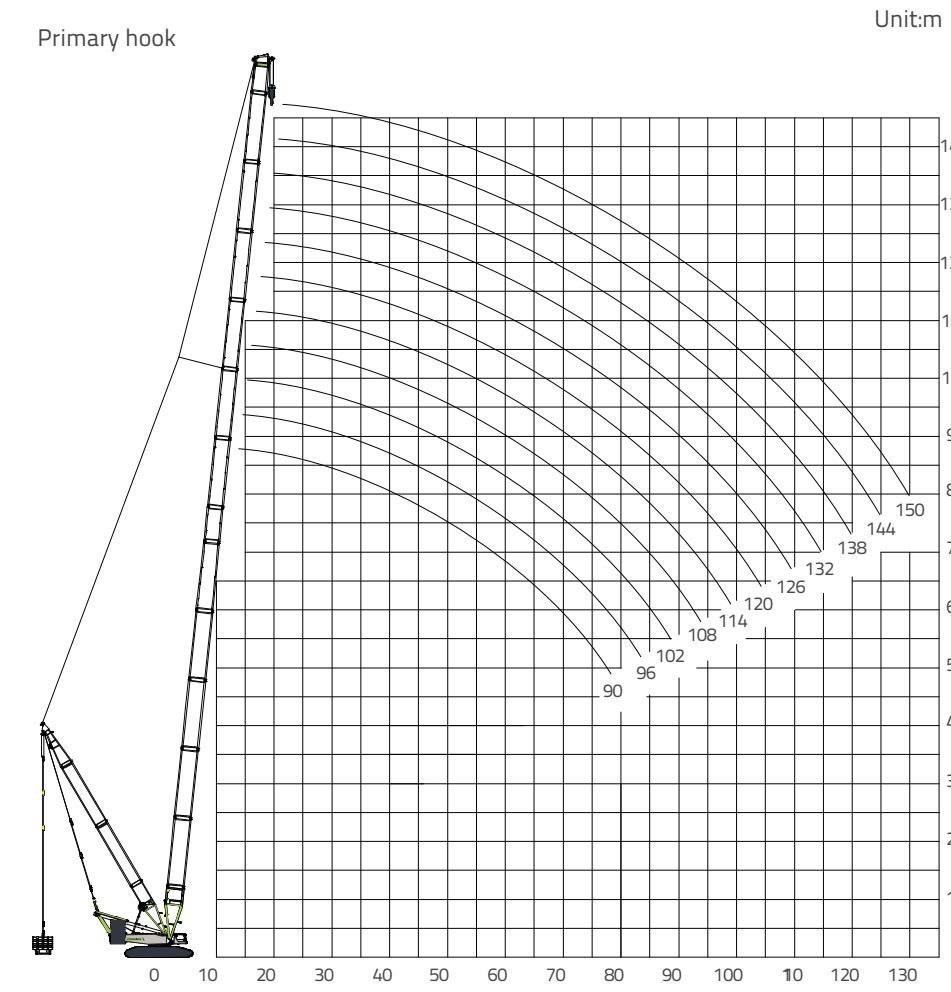
- This chart doesn't highlight main boom foot(G11-9m), main boom top section (G12-4.8m), luffing jib tapered section(G29-6m), luffing jib head (G22-4.2m).
- Power boom + wind power jib + superlift system(SLHSDB-1) consistent combination;



Superlift light boom
Lifting combination SLDB (90m-150m)

3.4 LIFTING PERFORMANCE

Superlift Light Boom Lifting Performance (Working Mode: SLDB)



Superlift light boom
Lifting performance curve chart SLDB(90m-150m)

Superlift light Boom Lifting Capacity Table											
Rear Counterweight:210t Car body Counterweight:60t Superlift Radius:20m Superlift Counterweight:300t											
Boom Length(m)	90	96	102	108	114	120	126	132	138	144	150
14	325	294	263	263							
16	325	294	263	263	231	231	231				
18	325	294	263	263	231	231	231	199	183	174	155
20	325	294	263	263	231	231	231	199	183	174	155
22	325	294	263	263	231	231	231	199	184	174	155
24	325	294	263	263	231	231	231	199	184	174	155
26	325	294	263	263	231	231	231	199	184	174	154
28	325	294	263	263	231	231	231	199	184	174	154
30	306	294	263	263	231	231	231	199	184	173	154
32	285	281	263	263	231	231	231	199	183	173	153
34	266	263	259	255	231	231	231	199	183	172	153
36	249	246	243	239	231	231	230	199	183	172	152
38	232	232	228	225	222	219	216	199	182	171	151
40	217	217	215	212	209	207	203	199	181	171	151
44	192	192	191	189	186	184	181	179	176	169	149
48	172	171	170	169	167	166	163	161	158	155	148
52	155	154	153	151	150	150	147	145	142	139	136
56	140	139	138	137	136	136	133	132	129	126	123
60	128	127	126	125	123	123	122	120	117	114	112
64	117	116	115	114	113	112	111	110	107	104	102
68	107	107	106	104	103	103	101	100	97.9	95.1	92.5
72	99.1	98.3	97.2	95.9	94.7	94.4	93.1	92.2	89.8	87	84.5
76	91.7	90.9	89.8	88.5	87.2	87	85.6	84.9	82.4	79.8	77.2
80		84.3	83.1	81.8	80.6	80.3	79	78.3	75.8	73.2	70.8
84		78.3	77.1	75.8	74.6	74.2	73	72.2	69.9	67.3	64.9
88			71.7	70.4	69.1	68.9	67.6	66.7	64.4	61.8	59.4
92				65.4	64.2	63.9	62.6	61.6	59.3	56.8	54.5
96					59.6	59.4	58.1	57	54.7	52.3	49.9
100						55.5	53.9	52.7	50.5	48	45.7

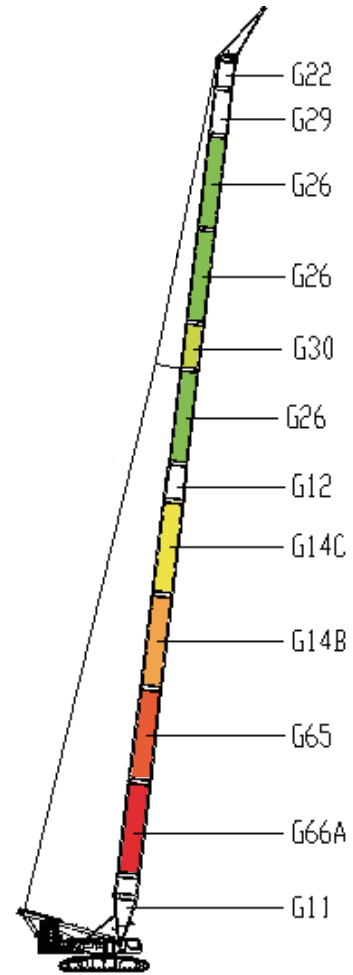
3.5 LIFTING PERFORMANCE

Standard Light Boom + Wind Power Jib Lifting Performance
(Working Mode: SLHS)

	Power Boom		Standard Boom				light Boom		
Codes	G66A	G65	G13	G14As	G14B	G14C	G30	G26	G23
Length(m)	12	12	6	12	12	12	6	12	3
90	1	1	1	1	1	1	-	-	-
93	1	1	1	1	1	1	-	-	1
96	1	1	-	1	2	1	-	-	-
99	1	1	-	1	2	1	-	-	1
102	1	1	1	1	2	1	-	-	-
105	1	1	-	1	1	1	1	1	1
108	1	1	-	1	1	1	-	2	-
111	1	1	-	-	1	1	-	3	1
114	1	1	-	-	1	1	1	3	-

Remark:

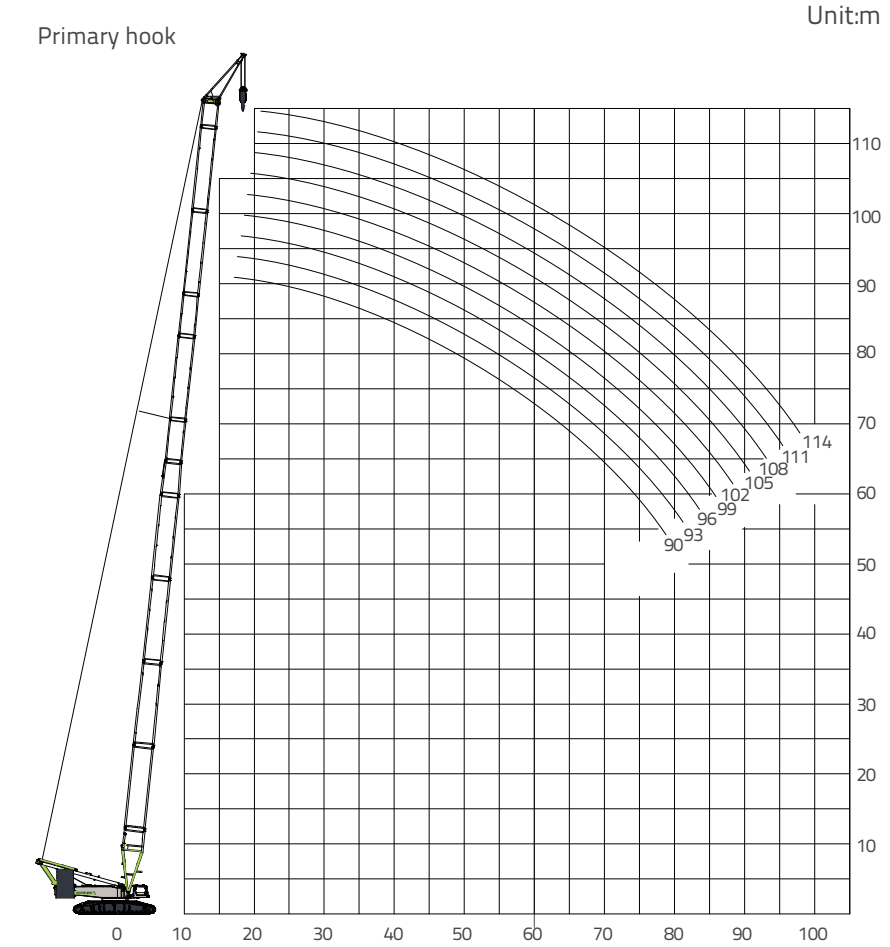
- This chart doesn't highlight main boom foot(G11-9m), main boom top section (G12-4.8m),luffing jib tapered section(G29-6m), luffing jib head (G22-4.2m).
- Boom combination and standard light boom (SL) consistent combination.



Standard light boom
+wind power jib lifting combination SLHS(90m-114m+7m)

3.5 LIFTING PERFORMANCE

Standard Light Boom + Wind Power Jib Lifting Performance
(Working Mode: SLHS)



Standard wind power jib
Lifting performance curve chart SLHS (90m-114m+7m)

Standard Wind Power Jib Lifting Capacity Table									
Rear Counterweight:210t Central counterweight:60t Jib head:7m									
Radius(m)	90	93	96	99	102	105	108	111	114
15	180	180	180						
16	180	177	174	171					
17	168	166	164	161	152	142	132		
18	159	157	155	152	148	141	131	120	110
19	150	148	146	144	143	140	129	118	109
20	142	140	138	136	135	133	127	116	108
22	128	126	125	123	122	120	121	114	106
24	116	114	113	111	110	109	109	108	103
26	105	104	103	101	101	98.9	100	98.4	97.6
28	96.5	95	94.1	92.5	92.1	90.5	91.6	90.2	89.6
30	88.5	87.2	86.2	84.9	84.5	83	84.4	82.8	82.3
32	81.5	80.2	79.4	78.1	77.8	76.5	77.8	76.5	76
34	75.2	74.1	73.4	72	71.8	70.5	72	70.7	70.2
36	69.7	68.5	67.9	66.6	66.4	65.2	66.8	65.5	65
38	64.7	63.5	62.9	61.7	61.6	60.3	62	60.7	58.4
40	60	59.1	58.4	57.3	57.1	56.1	57.6	54.5	52.1
44	51.3	51	50.7	49.5	49.5	48.5	48.1	43	43.7
48	44.3	43.9	43.8	43	43	41.9	39.7	39.6	37.5
52	38.4	37.8	37.8	37.4	37.4	36.4	33.2	32.2	31.1
56	33.5	32.3	32.3	32.3	32.3	31.6	28.5	27.4	26.4
60	28.8	28	28	27.5	28	26.7	23.8	22.4	21.3
64	24.6	24.1	24.1	23.3	23.3	23.3	20.4	19.6	18.6
68	21.2	20.7	20.7	19.9	19.9	19.9	18.2	17.2	15.2
72	17.8	17.8	17.8	16.5	17.3	16.5	14.6	14.8	13.6
76	15.2	14.4	14.4	14.4	14.4	13.6	12.7	12.2	11.4
80	13.1	12.3	12.3	11.8	11.8	11	9.6	9.3	8.6
84	10.2	10.2	10.2	9.7	9.7	8.9	8	7.7	7
88		8.1	7.6	7.6	7.6	6.8	6.9	6.1	5.6

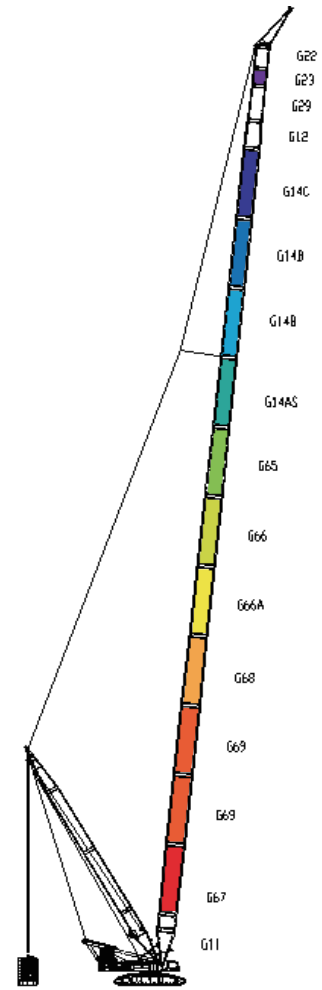
3.6 LIFTING PERFORMANCE

Superlift Power Boom + Wind Power Jib Lifting Performance
(Working Mode: SLHSDB-1)

	Power Boom II			Power Boom			Standard Boom				light Boom
Codes	G67	G69	G68	G66A	G66	G65	G13	G14As	G14B	G14C	G23
Length(m)	12	12	12	12	12	12	6	12	12	12	3
108	1	1	1	1	1	1	-	1	-	-	-
111	1	1	1	1	1	1	-	1	-	-	1
114	1	1	1	1	1	1	1	1	-	-	-
117	1	1	1	1	1	1	1	1	-	-	1
120	1	1	1	1	1	1	-	1	1	-	-
123	1	1	1	1	1	1	-	1	1	-	1
126	1	1	1	1	1	1	1	1	1	-	-
129	1	1	1	1	1	1	1	1	1	-	1
132	1	1	1	1	1	1	-	1	2	-	-
135	1	1	1	1	1	1	-	1	2	-	1
138	1	1	1	1	1	1	1	1	2	-	-
141	1	2	1	1	1	1	1	1	1	-	1
144	1	2	1	1	1	1	-	1	2	-	-
147	1	2	1	1	1	1	-	1	2	-	1
150	1	2	1	1	1	1	1	1	2	-	-
153	1	2	1	1	1	1	1	1	2	-	1
156	1	2	1	1	1	1	-	1	2	1	-
159	1	2	1	1	1	1	-	1	2	1	1

Remark:

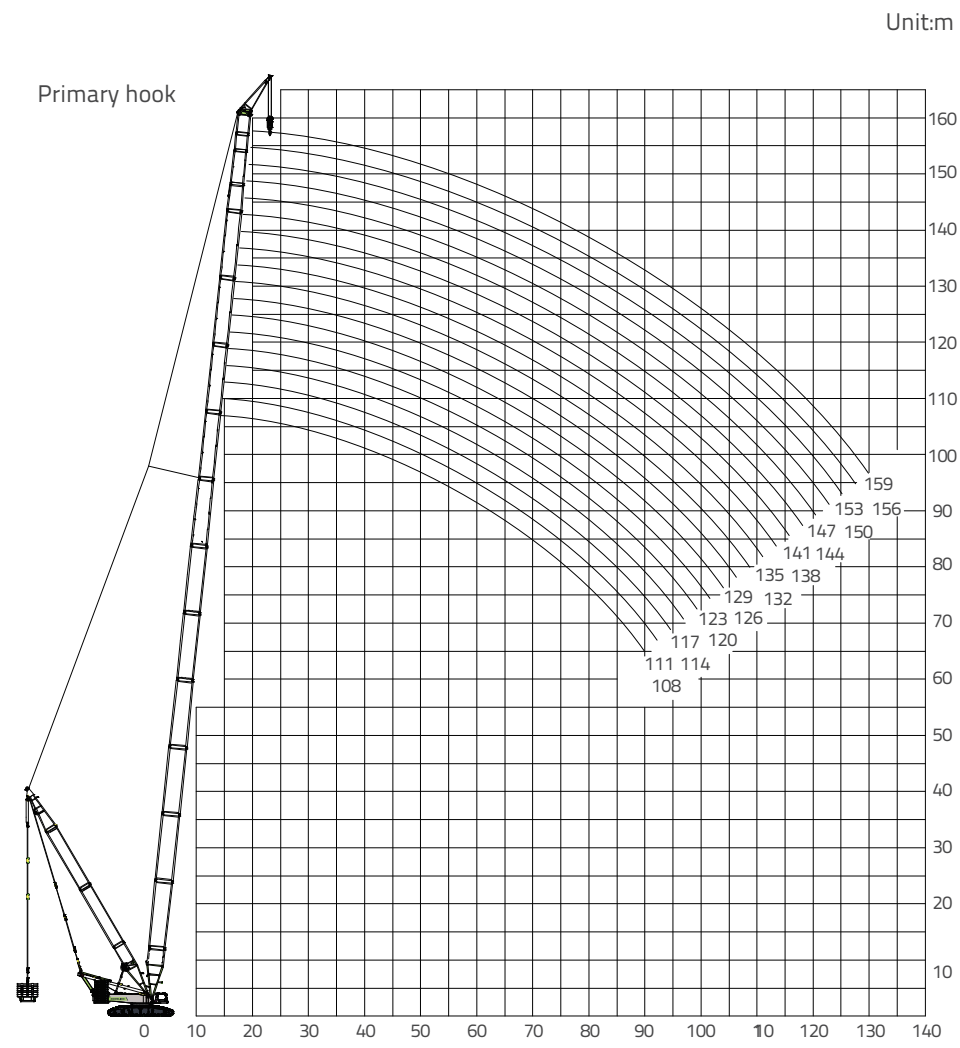
- This chart doesn't highlight main boom foot(G11-9m), main boom top section (G12-4.8m), luffing jib tapered section(G29-6m), luffing jib head (G22-4.2m).
- Boom combination and superlift light boom(SLDB)consistent combination;



Superlift power boom + wind power jib lifting combination
SLHSDB-1(108m-159m+7m)

3.6 LIFTING PERFORMANCE

Superlift Power Boom + Wind Power Jib Lifting Performance
(Working Mode: SLHSDB-1)



Superlift power boom + wind power jib lifting performance
curve chart SLHSDB-1(108m-159m+7m)

Standard light Boom Lifting Capacity Table							
Superlift radius: 20m Rear counterweight: 210t Central counterweight: 60t Suspended ballast: 300t							
Radius(m)	Main boom length (m)						Radius(m)
	108	111	114	117	120	123	
19	180	180	180	180	180	180	19
20	180	180	180	180	180	180	20
22	180	180	180	180	180	180	22
24	180	180	180	180	180	180	24
26	179	180	180	180	180	180	26
28	176	177	178	179	179	180	28
30	174	174	175	176	176	177	30
32	171	172	173	173	174	175	32
34	169	169	170	171	171	172	34
36	166	167	168	169	169	170	36
38	164	164	165	166	167	168	38
40	162	162	163	164	165	166	40
44	157	158	159	160	161	162	44
48	154	154	155	156	157	158	48
52	150	151	150	150	149	149	52
56	136	136	135	135	135	134	56
60	127	126	125	125	125	125	60
64	116	115	114	114	114	114	64
68	106	106	105	105	105	104	68
72	97.6	97.3	96.5	96.1	96.1	95.7	72
76	90.1	89.8	89	88.6	88.6	88.2	76
80	83.4	83.1	82.2	81.9	81.9	81.5	80
84	77.4	77.1	76.2	75.9	75.8	75.4	84
88	71.9	71.6	70.7	70.4	70.3	69.9	88
92	66.9	66.6	65.7	65.4	65.3	64.9	92
96	62.3	62	61.1	60.8	60.7	60.3	96
100	56.7	57.2	56.8	56.6	56.5	56.1	100
104		51.8	51.5	51.9	52.2	52.2	104
108				46.9	47.6	47.8	108
112					42.9	43.1	112

3.6 LIFTING PERFORMANCE

Superlift Power Boom + Wind Power Jib Lifting Performance
(Working Mode: SLHSDB-1)

Standard light Boom Lifting Capacity Table							
Superlift radius: 20m Rear counterweight: 210t Central counterweight: 60t Suspended ballast: 300t							
Radius(m)	Main boom length (m)						Radius(m)
	126	129	132	135	138	141	
19	180	180					19
20	180	180	173	162			20
22	180	180	173	162	157	156	22
24	180	180	173	162	157	156	24
26	180	180	173	162	158	156	26
28	180	180	173	162	158	156	28
30	178	178	173	162	158	156	30
32	175	176	173	162	157	156	32
34	173	174	173	162	155	155	34
36	171	171	172	162	153	153	36
38	168	169	170	162	151	151	38
40	166	167	167	162	149	150	40
44	162	163	164	161	146	146	44
48	159	160	160	160	143	142	48
52	148	148	148	147	140	137	52
56	133	133	133	132	131	128	56
60	123	122	122	121	119	117	60
64	113	112	111	110	109	106	64
68	103	103	102	101	99.4	97.2	68
72	94.8	94.2	93.7	92.8	91.2	89.1	72
76	87.3	86.8	86.3	85.4	83.9	81.8	76
80	80.6	80.1	79.6	78.8	77.2	75.2	80
84	74.5	74	73.5	72.7	71.2	69.1	84
88	69	68.4	68	67.2	65.7	63.6	88
92	64	63.3	62.9	62.1	60.6	58.6	92
96	59.3	58.6	58.2	57.5	56	54	96
100	55	54.3	53.9	53.2	51.7	49.7	100
104	50.9	50.1	49.9	49.2	47.7	45.7	104
108	46.7	46.6	46.2	45.5	44	42	108
112	42.6	42.8	42.7	42	40.6	38.6	112
116		38.5	39	38.8	37.3	35.3	116
120		34.4	34.9	35	34.3	32.3	120

Standard light Boom Lifting Capacity Table							
Superlift radius: 20m Rear counterweight: 210t Central counterweight: 60t Suspended ballast: 300t							
Radius(m)	Main boom length (m)						Radius(m)
	144	147	150	153	156	159	
22	148	139	130	122			22
24	148	139	130	122	115	110	24
26	148	139	130	122	114	109	26
28	147	139	130	122	114	108	28
30	147	139	130	121	114	107	30
32	147	138	129	121	114	107	32
34	147	138	129	121	114	107	34
36	146	138	129	121	113	106	36
38	146	138	128	120	113	106	38
40	146	137	128	120	112	106	40
44	144	136	127	119	111	104	44
48	139	135	126	118	110	103	48
52	133	129	124	117	109	102	52
56	128	124	120	115	108	100	56
60	116	115	113	111	104	96.3	60
64	106	105	103	102	100	92.1	64
68	96.8	96.3	95.4	94.9	93	88.7	68
72	88.6	87.8	86.9	86.4	85	84.1	72
76	81.3	80.4	79.3	78.8	77.8	76.9	76
80	74.7	73.8	72.5	72.1	71.3	70.4	80
84	68.7	67.9	66.4	66	65.4	64.5	84
88	63.2	62.4	60.9	60.4	59.9	59.1	88
92	58.2	57.4	55.8	55.4	55	54.2	92
96	53.5	52.8	51.2	50.8	50.4	49.6	96
100	49.3	48.5	47	46.6	46.2	45.4	100
104	45.3	44.6	43.1	42.7	42.3	41.5	104
108	41.6	40.9	39.5	39.1	38.6	37.9	108
112	38.2	37.5	36.2	35.7	35.2	34.5	112
116	35	34.3	33.1	32.6	32.1	31.4	116
120	32	31.3	30.1	29.7	29.1	28.4	120

3.6 LIFTING PERFORMANCE

Superlift Power Boom + Wind Power Jib Lifting Performance
(Working Mode: SLHSDB-1)

Standard light Boom Lifting Capacity Table							
Superlift radius: 20m Rear counterweight: 210t Central counterweight: 60t Suspended ballast: 0t							
Radius(m)	Main boom length (m)						Radius(m)
	108	111	114	117	120	123	
19	172	170	168	166	165	164	19
20	163	161	159	158	156	155	20
22	147	145	143	142	141	139	22
24	132	131	130	129	128	126	24
26	118	117	116	115	115	114	26
28	107	106	105	104	103	103	28
30	97	96.3	95.1	94.4	93.9	93.1	30
32	87.9	87.6	86.5	85.8	85.3	84.6	32
34	79.5	79.2	78.4	78.1	77.8	77.1	34
36	72.1	71.8	71	70.7	70.7	70.3	36
38	65.6	65.3	64.4	64.2	64.1	63.8	38
40	59.8	59.5	58.6	58.3	58.3	57.9	40
44	49.9	49.6	48.7	48.4	48.4	48	44
48	41.9	41.6	40.7	40.3	40.3	39.9	48
52	35.2	34.9	33.9	33.6	33.5	33.1	52
56	29.5	29.1	28.2	27.9	27.8	27.4	56
60	24.6	24.2	23.3	23	22.9	22.5	60
64	20.3	20	19	18.7	18.6	18.2	64
68	16.6	16.3	15.3	14.9	14.9	14.4	68
72	13.3	12.9	12	11.6	11.5	11.1	72
76	10.3	10	9	8.7	8.6	8.1	76
80	7.7	7.3	6.3	6	5.9	5.5	80
84	5.3						84

Standard light Boom Lifting Capacity Table							
Superlift radius: 20m Rear counterweight: 210t Central counterweight: 60t Suspended ballast: 0t							
Radius(m)	Main boom length (m)						Radius(m)
	126	129	132	135	138	141	
19	161	160					19
20	153	151	150	149			20
22	138	136	135	134	132	130	22
24	125	124	122	121	120	118	24
26	113	112	111	110	109	107	26
28	101	101	100	99.4	98.1	96.6	28
30	91.9	91.2	90.6	89.8	88.6	87.1	30
32	83.4	82.8	82.2	81.5	80.3	78.8	32
34	76	75.3	74.8	74.1	72.9	71.4	34
36	69.3	68.7	68.2	67.6	66.4	64.9	36
38	62.9	62.6	62.4	61.7	60.5	59	38
40	57	56.7	56.6	56.2	55.3	53.8	40
44	47.1	46.8	46.6	46.3	45.3	44	44
48	39	38.6	38.5	38.1	37.1	35.8	48
52	32.2	31.8	31.7	31.3	30.3	28.9	52
56	26.4	26.1	25.9	25.5	24.5	23.1	56
60	21.5	21.1	21	20.6	19.6	18.1	60
64	17.2	16.9	16.7	16.3	15.3	13.8	64
68	13.4	13.1	12.9	12.5	11.5	10	68
72	10.1	9.8	9.6	9.2	8.1	6.7	72
76	7.1	6.8	6.6	6.2	5.2		76

3.6 LIFTING PERFORMANCE

Superlift Power Boom + Wind Power Jib Lifting Performance
(Working Mode: SLHSDB-1)
Luffing Jib Lifting Capacity Table

Standard light Boom Lifting Capacity Table							
Superlift radius: 20m Rear counterweight: 210t Central counterweight: 60t Suspended ballast: 0t							
Radius(m)	Main boom length (m)						Radius(m)
	144	147	150	153	156	159	
22	129	128	127	122			22
24	117	116	114	113	113	110	24
26	106	105	104	103	102	101	26
28	95.9	95.1	93.9	93.1	92.6	91.8	28
30	86.5	85.7	84.5	83.8	83.4	82.6	30
32	78.2	77.5	76.3	75.6	75.3	74.5	32
34	70.9	70.2	69.1	68.4	68.1	67.3	34
36	64.4	63.7	62.6	61.9	61.7	61	36
38	58.6	57.9	56.8	56.2	55.9	55.2	38
40	53.4	52.7	51.6	50.9	50.7	50.1	40
44	43.8	43.4	42.6	41.9	41.8	41.1	44
48	35.6	35.2	34.3	33.9	34	33.6	48
52	28.8	28.4	27.4	27	27.1	26.7	52
56	23	22.5	21.6	21.2	21.3	20.9	56
60	18	17.6	16.6	16.2	16.3	15.8	60
64	13.7	13.2	12.3	11.8	11.9	11.5	64
68	9.9	9.4	8.5	8	8.1	7.7	68
72	6.5	6.1	5.1				72

3.7 LIFTING PERFORMANCE

Superlift Power Boom Booster + Wind Power Jib Lifting Performance
(Working Mode: SLHSDB-2)
Luffing Jib (Working Mode: SW)

	Power Boom			Standard Boom				light Boom
Codes	G66A	G66	G65	G13	G14As	G14B	G14C	G23
length(m)	12	12	12	6	12	12	12	3
147	1	1	1	1	1	1	-	1
150	1	1	1	-	1	2	-	-
153	1	1	1	-	1	2	-	1
156	1	1	1	1	1	2	-	-
159	1	1	1	1	1	2	-	1
162	1	1	1	-	1	2	1	-
165	1	1	1	-	1	2	1	1
168	1	1	1	1	1	2	1	-
171	1	1	1	1	1	2	1	1

Remark:

- This chart doesn't highlight main boom foot(G11-9m), power boom booster(54m),main boom top section (G12-4.8m), luffing jib tapered section(G29-6m), luffing jib head (G22-4.2m).

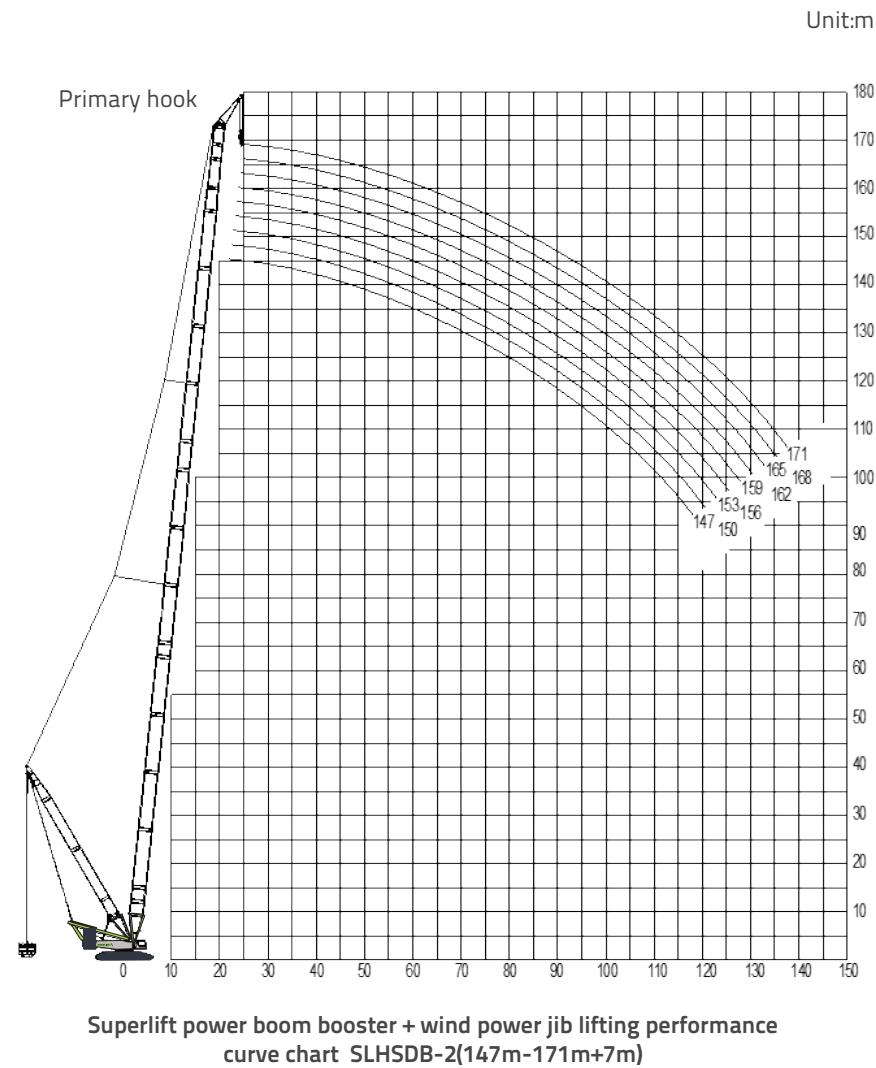
Luffing Jib (Working Mode: SW)



Superlift power boom booster + wind power lifting combination SLHSDB-2 (147m-171m+7m)

3.7 LIFTING PERFORMANCE

Superlift Power Boom Booster + Wind Power Jib Lifting Performance
(Working Mode: SLHSDB-2)



Rear Counterweight:190 t ;Superlift Counterweight 400t Car body Counterweight:60 t ; Superlift Radius:20 m ;Wind Power Jib:7 m										
Radius (m)	Boom length (m)									Radius (m)
	147	150	153	156	159	162	165	168	171	
22	180									22
24	180	171	161	157	147	138	128			24
26	180	168	158	155	144	133	124	124	112	26
28	178	164	155	151	142	129	120	119	112	28
30	175	160	150	146	137	124	115	115	108	30
32	171	155	145	140	131	121	111	110	104	32
34	166	150	140	135	126	117	108	106	98.9	34
36	161	145	136	130	122	113	104	101	95.5	36
38	156	140	131	126	117	108	101	98.1	92.1	38
40	151	135	125	121	113	104	96.8	93.4	87.9	40
44	145	130	117	113	104	96.8	90	86.6	81	44
48	140	124	109	104	98.1	90	83.1	81	75.5	48
52	132	118	102	98.9	92.1	84.5	77.6	75.5	70	52
56	121	108	98	92.1	86.6	78.9	73.4	70	64.5	56
60	108	100	92.5	87.9	81	74.7	68.7	65.3	59.8	60
64	102	93.4	86.6	82.3	75.5	70	64.5	61.1	56.4	64
68	96.8	89.2	82.3	77.6	72.1	65.8	59.8	56.9	52.2	68
72	93.4	84.5	77.6	73.4	67.9	62.4	56.9	53.5	48.8	72
76	89.2	81	74.7	70	64.5	59	53.5	50.1	45.4	76
80	84.5	77.6	71.3	66.6	61.1	55.6	50.1	46.7	43.3	80
84	82.3	74.7	67.9	63.2	57.7	52.2	47.5	44.6	39.9	84
88	77.6	72.1	65.3	61.1	55.6	50.1	45.4	42	37.8	88
92	72.1	68.7	62.4	57.7	53	47.5	42.5	39.9	35.7	92
96	66.6	66.6	59.8	55.6	50.1	45.4	40.7	37	33.6	96
100	61.1	61.1	57.7	53.5	48.8	43.3	38.6	35.7	31	100

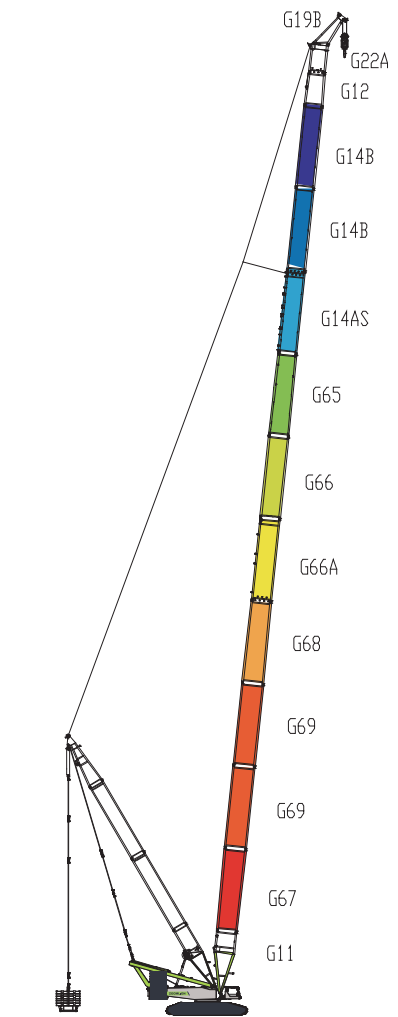
3.8 LIFTING PERFORMANCE

Superlift Power Boom + Wind Power Jib Lifting Performance
(Working Mode: SLHSDB-3)

Codes	G67	G69	G68	G66A	G66	G65	G14AS	G13	G14B	G16
Length	12	12	12	12	12	12	12	6	12	3
108	1	2	1	1	1	1	-	1	-	-
111	1	2	1	1	1	1	-	1	-	1
114	1	2	1	1	1	1	1	-	-	-
117	1	2	1	1	1	1	1	-	-	1
120	1	2	1	1	1	1	1	1	-	-
123	1	2	1	1	1	1	1	1	-	1
126	1	2	1	1	1	1	1	-	1	-
129	1	2	1	1	1	1	1	-	1	1
132	1	2	1	1	1	1	1	1	1	-
135	1	2	1	1	1	1	1	1	1	1
138	1	2	1	1	1	1	1	-	2	-

Remark:

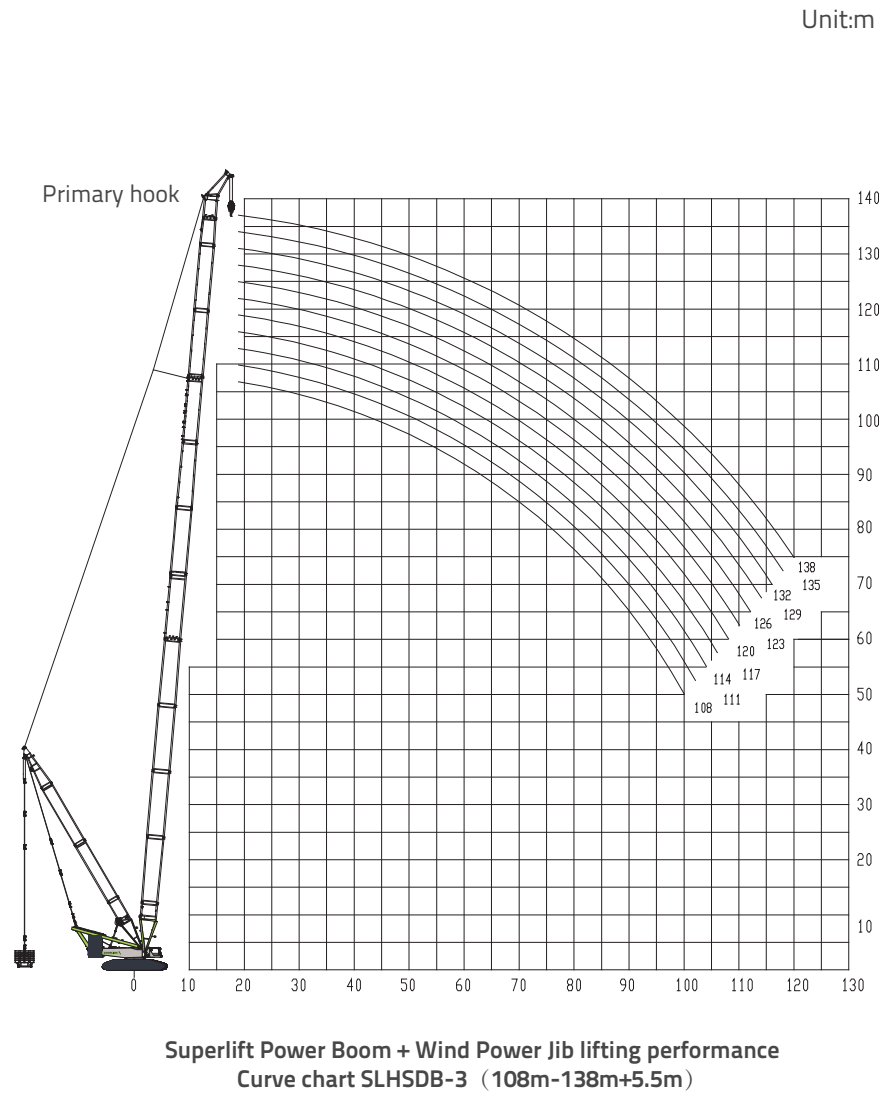
- Main boom pivot section (G11-9m), main boom head (G12-4.8m) and luffing jib head (G22-4.2m) are not labeled in the above table.



Superlift Power Boom + Wind Power Jib
SLHSDB-3 (108m-138m+5.5m)

3.8 LIFTING PERFORMANCE

Superlift Power Boom + Wind Power Jib Lifting Performance
(Working Mode: SLHSDB-3)



Standard Wind Power Jib Lifting Capacity Table											
Superlift radius: 17m Rear counterweight: 210t Central counterweight: 60t Suspended ballast: 300t											
Radius(m)	108	111	114	117	120	123	126	129	132	135	138
19	270	262	262	261	231	230	217	205	191	181	169
20	270	262	262	261	231	230	217	205	191	181	169
22	270	262	262	261	231	230	217	205	191	181	169
24	270	262	262	261	231	230	217	205	191	181	169
26	270	262	262	261	231	230	217	205	191	181	169
28	270	262	262	261	231	230	217	205	191	181	169
30	270	262	262	261	231	230	217	205	191	181	169
32	270	262	262	261	231	230	217	205	191	181	169
34	253	252	252	252	231	230	217	205	191	181	169
36	234	234	234	233	231	230	217	205	191	181	169
38	218	217	217	216	216	215	216	205	191	180	168
40	203	203	203	202	201	201	201	200	191	180	168
44	178	178	178	177	176	176	176	175	175	174	167
48	158	157	157	156	156	155	156	155	154	153	154
52	141	140	140	139	139	138	139	138	137	136	137
56	127	126	126	125	125	124	124	123	123	122	123
60	115	114	114	113	112	112	112	111	111	110	110
64	104	103	103	102	102	101	101	100	100	99.3	99.8
68	94.9	94	94	93.1	92.7	91.8	92.3	91.4	91	90	90.4
72	86.7	85.8	85.8	84.9	84.4	83.5	84.1	83.2	82.7	81.7	82.2
76	79.3	78.5	78.4	77.5	77.1	76.2	76.7	75.8	75.4	74.4	74.8
80	72.8	71.9	71.8	71	70.5	69.6	70.1	69.2	68.8	67.8	68.3
84	66.9	66	65.9	65	64.6	63.7	64.2	63.3	62.8	61.8	62.3
88	61.5	60.6	60.6	59.7	59.2	58.3	58.9	57.9	57.5	56.5	57
92	56.6	55.7	55.7	54.8	54.3	53.4	54	53	52.6	51.6	52.1
96	52.1	51.2	51.2	50.3	49.8	48.9	49.5	48.6	48.1	47.1	47.6
100	47.9	47	47	46.1	45.7	44.8	45.4	44.4	44	43	43.5
104			43.2	42.3	41.9	41	41.6	40.6	40.2	39.2	39.7
108				38.8	38.4	37.4	38	37.1	36.7	35.7	36.2
112						34.2	34.8	33.8	33.4	32.4	32.9
116							31.7	30.8	30.4	29.3	29.9
120									27.5	26.5	27

3.8 LIFTING PERFORMANCE

Superlift Power Boom + Wind Power Jib Lifting Performance
(Working Mode: SLHSDB-3)

Standard Wind Power Jib Lifting Capacity Table											
Superlift radius: 20m Rear counterweight: 210t Central counterweight: 60t Suspended ballast: 0t											
Radius(m)	108	111	114	117	120	123	126	129	132	135	138
19	169	167	166	164	162	160	159	157	155	153	152
20	159	158	156	155	153	151	150	148	147	145	144
22	140	139	138	137	135	134	134	132	131	130	129
24	124	123	122	121	120	119	118	117	116	115	115
26	111	110	109	108	107	106	106	104	103	102	102
28	99.6	98.5	98	96.8	96	94.8	94.8	93.6	92.8	91.5	91.4
30	89.8	88.7	88.2	87.1	86.3	85.2	85.2	84.1	83.3	82.1	82
32	80.3	79.6	79.6	78.7	77.9	76.8	76.9	75.8	75	73.9	73.9
34	72.1	71.3	71.3	70.6	70.2	69.4	69.5	68.5	67.7	66.6	66.6
36	64.9	64.1	64.1	63.3	62.9	62.1	62.7	61.9	61.3	60.1	60.2
38	58.5	57.7	57.7	56.9	56.5	55.7	56.2	55.4	55.1	54.2	54.4
40	52.8	52.1	52	51.2	50.8	50	50.5	49.7	49.3	48.4	48.9
44	43.2	42.4	42.4	41.6	41.1	40.3	40.8	40	39.6	38.7	39.1
48	35.4	34.5	34.5	33.6	33.2	32.4	32.9	32.1	31.6	30.7	31.2
52	28.8	27.9	27.9	27.1	26.6	25.8	26.3	25.4	25	24	24.5
56	23.2	22.4	22.3	21.5	21	20.1	20.7	19.8	19.4	18.4	18.9
60	18.4	17.6	17.5	16.7	16.2	15.3	15.9	15	14.5	13.6	14
64	14.3	13.4	13.4	12.5	12	11.1	11.7	10.8	10.3	9.3	9.8
68	10.6	9.7	9.7	8.8	8.4	7.5	8	7.1	6.7	5.7	6.1
72	7.4	6.5	6.4	5.6	5.1	160					

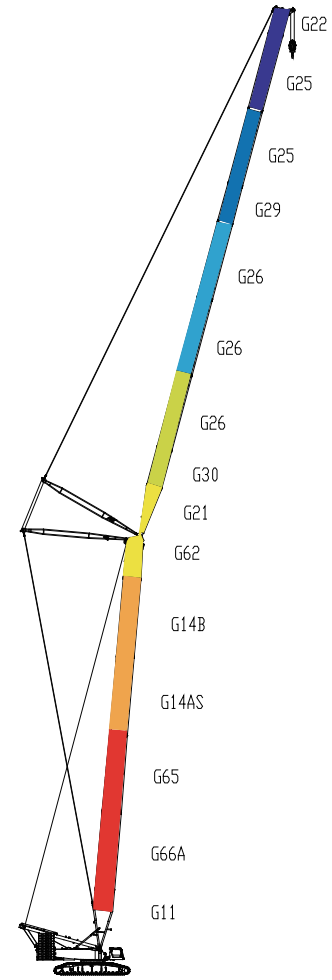
3.9 LIFTING PERFORMANCE

Luffing Jib (Working Mode: SW)

Codes	G21	G30	G26	G29	G25	G22
Length(m)	7.8	6	12	6	12	4.2
24	1	1	0	1	0	1
30	1	0	1	1	0	1
36	1	1	1	1	0	1
42	1	0	2	1	0	1
48	1	1	2	1	0	1
54	1	0	3	1	0	1
60	1	1	3	1	0	1
66	1	0	3	1	1	1
72	1	1	3	1	1	1
78	1	0	3	1	2	1
84	1	1	3	1	2	1

Remark:

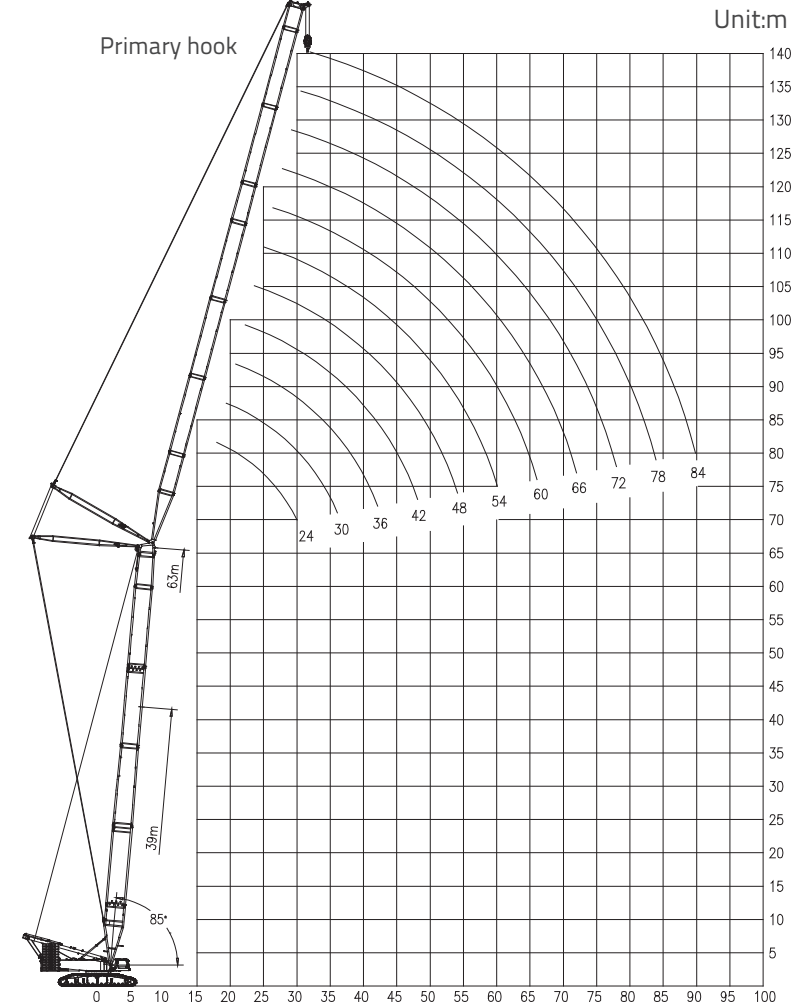
- Main boom in SW mode is the same as S
- Main boom length: 39-63m



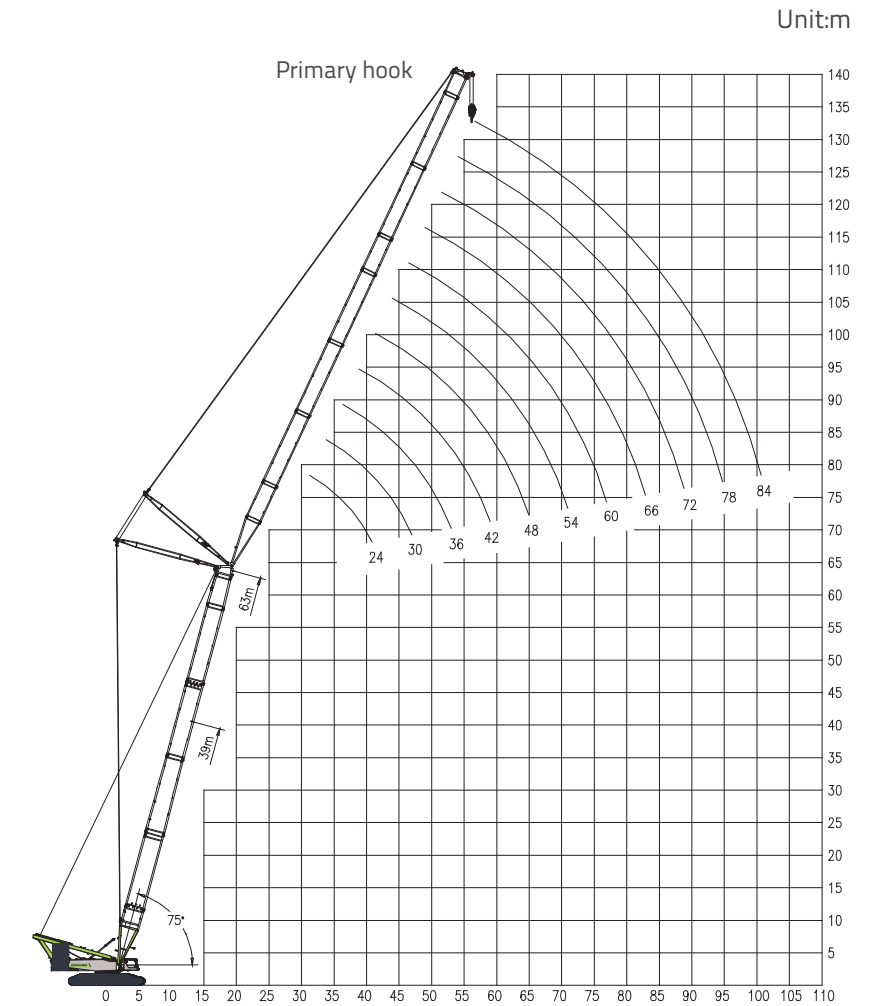
Luffing jib on heavy main boom
Lifting combination SW (S:39-63m,W:24-84m)

3.9 LIFTING PERFORMANCE

Luffing Jib (Working Mode: SW)



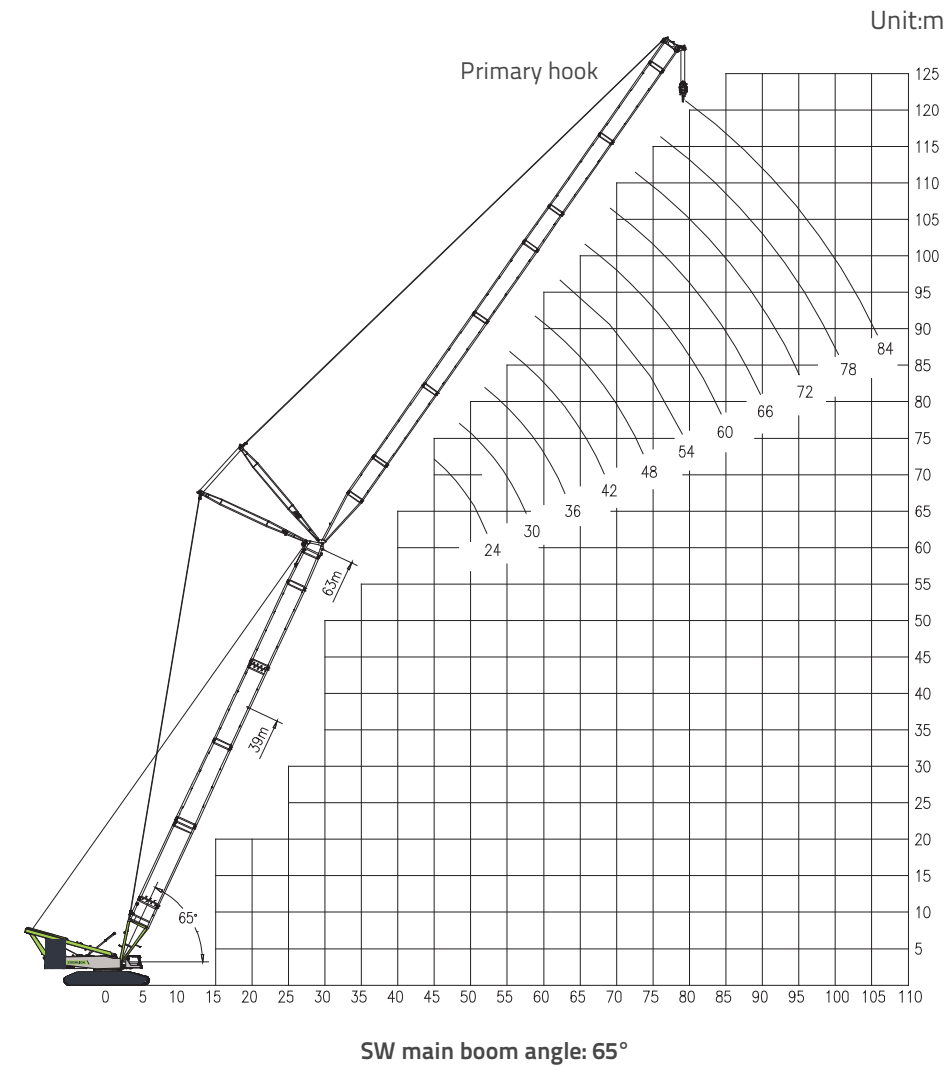
SW main boom angle: 85°



SW main boom angle: 75°

3.9 LIFTING PERFORMANCE

Luffing Jib (Working Mode: SW)



Luffing Jib Lifting Capacity Table											
Main boom length: 39m Rear counterweight: 210t Central counterweight: 60t Main boom angle: 85°											
Radius(m)	24	30	36	42	48	54	60	66	72	78	84
16	221	214									
18	196	190	184								
20	176	171	166	161							
22	155	155	151	146	142	138					
24	138	138	137	134	130	127	123				
26	124	124	124	123	120	117	113	110			
28	113	113	112	112	111	108	105	102	99.3	96.8	
30		103	103	102	101	100	98.1	95.5	92.3	90.1	87.3
32		95.3	94.7	94	93	92.4	91.3	89.1	86.2	84.1	81.3
34		88.1	87.5	86.9	85.9	85.3	84.2	83.4	80.7	78.7	76.1
36			81.3	80.6	79.7	79	78	77.2	75.8	73.8	71.4
38			75.7	75.1	74.2	73.6	72.5	71.7	70.6	69.5	67
40			70.7	70.2	69.3	68.7	67.7	66.8	65.7	65.1	63.2
44				61.9	61	60.4	59.4	58.6	57.5	56.8	55.7
48					54.2	53.7	52.7	51.8	50.7	50.1	49
52					48.4	48	47	46.2	45.1	44.5	43.4
56						43.1	42.2	41.4	40.3	39.7	38.6
60							38.1	37.3	36.2	35.6	34.5
64							34.4	33.7	32.7	32.1	31
68								30.5	29.5	28.9	27.8
72									26.7	26.2	25.1
76									24.2	23.7	22.6
80										21.4	20.4
84											18.4

3.9 LIFTING PERFORMANCE

Luffing Jib (Working Mode: SW)

Luffing Jib Lifting Capacity Table											
Main boom length: 45m Rear counterweight: 210t Central counterweight: 60t Main boom angle: 85°											
Radius(m)	24	30	36	42	48	54	60	66	72	78	84
16	213										
18	189	184	178								
20	170	166	161	156							
22	155	151	146	142	138						
24	138	138	134	130	126	123	119				
26	124	124	123	120	117	114	110	107			
28	113	113	112	111	108	105	102	99.5	96.5		
30	103	103	102	102	101	98.5	95.5	92.6	89.8	87.4	
32		95.1	94.4	93.7	92.7	92	89.1	86.7	83.8	81.6	79
34		87.9	87.3	86.6	85.6	84.9	83.6	81.1	78.5	76.4	73.9
36		81.5	81.1	80.4	79.4	78.8	77.7	76.2	73.6	71.8	69.3
38			75.5	74.9	74	73.3	72.2	71.4	69.3	67.5	65
40			70.6	70	69.1	68.5	67.4	66.5	65.4	63.6	61.3
44				61.7	60.8	60.2	59.2	58.3	57.2	56.5	54.6
48					54	53.5	52.4	51.6	50.5	49.8	48.7
52					48.3	47.8	46.8	45.9	44.9	44.2	43.1
56						43	42	41.2	40.1	39.5	38.4
60							37.9	37.1	36	35.4	34.3
64							34.2	33.5	32.5	31.9	30.8
68								30.3	29.4	28.8	27.7
72									26.6	26	24.9
76									24	23.5	22.5
80										21.3	20.3
84											18.2
88											16.3

Luffing Jib Lifting Capacity Table											
Main boom length: 51m Rear counterweight: 210t Central counterweight: 60t Main boom angle: 85°											
Radius(m)	24	30	36	42	48	54	60	66	72	78	84
16	205										
18	183	178									
20	165	161	156	151							
22	150	146	142	138	134						
24	138	134	130	127	123	119					
26	124	124	120	117	113	110	107	104			
28	112	112	112	108	105	102	99.5	96.6	93.6		
30	103	103	102	101	98.3	95.7	92.6	90.1	87.1	84.8	
32		94.8	94.1	93.3	92	89.6	86.7	84.2	81.3	79.2	76.6
34		87.7	87	86.3	85.2	84.1	81.3	78.9	76.2	74.2	71.7
36		81.3	80.8	80.1	79.1	78.4	76.5	74.1	71.6	69.7	67.2
38			75.3	74.6	73.6	73	71.9	69.9	67.3	65.5	63.2
40			70.4	69.8	68.8	68.1	67.1	66	63.5	61.8	59.5
44				61.5	60.6	59.9	58.9	58	56.9	55.3	53
48				54.5	53.8	53.2	52.2	51.3	50.2	49.5	47.5
52					48.1	47.6	46.6	45.7	44.6	43.9	42.8
56						42.8	41.8	41	39.9	39.2	38.1
60							37.7	36.9	35.8	35.2	34
64							34.1	33.3	32.3	31.6	30.5
68								30.2	29.2	28.5	27.4
72									26.4	25.8	24.7
76									23.9	23.3	22.3
80										21.1	20.1
84											18.1
88											16.2

3.9 LIFTING PERFORMANCE

Luffing Jib (Working Mode: SW)

Luffing Jib Lifting Capacity Table											
Main boom length: 57m Rear counterweight: 210t Central counterweight: 60t Main boom angle: 85°											
Radius(m)	24	30	36	42	48	54	60	66	72	78	84
16	198										
18	177	172									
20	160	155	150								
22	146	142	137	133	129						
24	134	130	126	123	119	116					
26	123	120	117	113	110	107	103				
28	112	112	108	105	102	99.5	96.3	93.6			
30	102	102	101	98.5	95.5	92.8	89.9	87.3	84.2	82.1	
32		94.5	93.7	92.3	89.4	86.8	84.1	81.6	78.7	76.7	73.9
34		87.3	86.6	85.8	83.9	81.6	78.9	76.5	73.8	71.8	69.2
36		81	80.4	79.7	78.7	76.9	74.2	71.9	69.3	67.4	64.9
38			75	74.3	73.3	72.5	70	67.8	65.3	63.5	61
40			70.1	69.4	68.4	67.8	66.2	64	61.6	59.8	57.5
44				61.2	60.2	59.6	58.5	57.5	55.1	53.5	51.3
48				54.3	53.5	52.9	51.8	50.9	49.6	48	46
52					47.8	47.3	46.3	45.4	44.3	43.4	41.4
56						42.5	41.5	40.7	39.6	38.9	37.4
60						38.3	37.5	36.6	35.5	34.9	33.7
64							33.9	33.1	32	31.4	30.2
68								29.9	28.9	28.3	27.2
72								27.1	26.2	25.6	24.5
76									23.7	23.1	22
80										20.9	19.9
84											17.9
88											16

Luffing Jib Lifting Capacity Table											
Main boom length: 63m Rear counterweight: 210t Central counterweight: 60t Main boom angle: 85°											
Radius(m)	24	30	36	42	48	54	60	66	72	78	84
18	171	166									
20	155	150	145								
22	141	137	133	129							
24	130	126	122	119	115	112					
26	120	117	113	110	107	104	100				
28	112	109	105	102	99.3	96.6	93.6	90.6			
30	102	102	98.7	95.9	92.6	90.2	87.1	84.6	81.6		
32		94.1	92.5	89.8	86.8	84.4	81.6	79.2	76.2	74.2	71.5
34		87	86.2	84.4	81.6	79.3	76.6	74.2	71.5	69.5	67
36		80.7	80.1	79.3	76.9	74.7	72.1	69.8	67.2	65.3	62.9
38			74.6	73.9	72.6	70.5	68	65.8	63.3	61.5	59.1
40			69.8	69.1	68.1	66.7	64.3	62.2	59.7	58	55.7
44				60.9	59.9	59.2	57.8	55.8	53.5	51.9	49.6
48				54.1	53.2	52.6	51.5	50.3	48.2	46.6	44.5
52					47.6	47	46	45.1	43.5	42.1	40
56						42.3	41.3	40.4	39.3	38.1	36.1
60						38.1	37.2	36.4	35.3	34.6	32.8
64							33.6	32.8	31.8	31.1	29.7
68								29.7	28.7	28.1	26.9
72								26.9	26	25.3	24.2
76									23.5	22.9	21.8
80										20.7	19.6
84										18.7	17.7
88											15.8

3.9 LIFTING PERFORMANCE

Luffing Jib Lifting Capacity Table												
Main boom length: 39m Rear counterweight: 210t Central counterweight: 60t Main boom angle: 75°												
Radius(m)	24	30	36	42	48	54	60	66	72	78	84	
26	115											
28	104	104										
30	95.7	95.2	93.9									
32	88.1	87.6	86.4									
34	81.4	81	79.9	78.9								
36	75.4	75.3	74.2	73.2	71.9							
38		70.2	69.1	68.2	66.9	66						
40		65.6	64.7	63.7	62.5	61.6	60.3					
44			57	56.1	54.9	54.1	52.8	51.8				
48			50.5	49.9	48.8	47.9	46.7	45.7	44.3	43.5		
52				44.6	43.6	42.8	41.6	40.6	39.3	38.5	37.2	
56					39.1	38.4	37.3	36.3	35	34.2	32.9	
60						34.6	33.5	32.5	31.3	30.5	29.3	
64							31.3	30.3	29.3	28.1	27.3	26.1
68								27.4	26.5	25.3	24.5	23.3
72									23.9	22.8	22.1	20.8
76									21.6	20.5	19.8	18.6
80										18.5	17.8	16.6
84											16	14.9
88											14.3	13.2
92												11.7

Luffing Jib Lifting Capacity Table													
Main boom length: 45m Rear counterweight: 210t Central counterweight: 60t Main boom angle: 75°													
Radius(m)	24	30	36	42	48	54	60	66	72	78	84		
28	102												
30	93.7	93											
32	86.3	85.6	84.4										
34	79.8	79.2	78	76.9									
36	74	73.6	72.4	71.3									
38	68.8	68.6	67.5	66.4	65.1								
40		64.2	63.1	62.1	60.8	59.9							
44		56.4	55.6	54.7	53.4	52.5	51.2	50.1					
48			49.4	48.6	47.4	46.5	45.3	44.2	42.8				
52				43.4	42.3	41.5	40.3	39.2	37.8	37	35.7		
56					38	37.3	36	35	33.7	32.9	31.6		
60					34.2	33.6	32.4	31.4	30.1	29.3	28		
64						30.3	29.2	28.2	27	26.2	24.9		
68							26.4	25.5	24.2	23.5	22.2		
72								23.9	23	21.8	21.1	19.8	
76									20.8	19.6	18.9	17.7	
80										17.6	17	15.7	
84											15.8	15.2	14
88												13.5	12.4
92													10.9
96													9.5

3.9 LIFTING PERFORMANCE

Luffing Jib (Working Mode: SW)

Luffing Jib Lifting Capacity Table												
Main boom length: 51m Rear counterweight: 210t Central counterweight: 60t Main boom angle: 75°												
Radius(m)	24	30	36	42	48	54	60	66	72	78	84	
28	100											
30	91.6											
32	84.3	83.6										
34	78	77.3	76									
36	72.4	71.8	70.5	69.4								
38	67.4	67	65.7	64.6	63.3							
40		62.6	61.5	60.4	59							
44		55.2	54.2	53.2	51.9	50.9	49.5					
48			48.1	47.2	46	45.1	43.7	42.6				
52				42.2	41.1	40.2	38.9	37.8	36.4	35.5		
56				37.9	36.9	36	34.8	33.7	32.3	31.5	30.1	
60					33.2	32.5	31.2	30.2	28.8	28	26.7	
64						29.3	28.1	27.1	25.8	25	23.7	
68						26.5	25.4	24.4	23.1	22.3	21	
72							23	22	20.8	20	18.7	
76								19.9	18.6	17.9	16.6	
80								17.9	16.7	16	14.8	
84									15	14.3	13.1	
88										12.7	11.5	
92											10.1	
96												8.8

Luffing Jib Lifting Capacity Table															
Main boom length: 57m Rear counterweight: 210t Central counterweight: 60t Main boom angle: 75°															
Radius(m)	24	30	36	42	48	54	60	66	72	78	84				
30	89.1														
32	82	81.1													
34	75.8	75													
36	70.4	69.7	68.4												
38	65.6	65	63.7	62.5											
40	61.3	60.8	59.5	58.4	57										
44		53.6	52.5	51.4	50	49									
48			46.6	45.6	44.3	43.4	42	40.8							
52				41.6	40.8	39.6	38.6	37.3	36.1	34.7					
56					36.6	35.5	34.6	33.3	32.2	30.7	29.8	27.7			
60						32	31.1	29.9	28.8	27.4	26.5	24.8			
64							28.8	28.1	26.9	25.8	24.4	23.6	22.2		
68								25.4	24.3	23.2	21.9	21.1	19.7		
72									21.9	20.9	19.6	18.8	17.5		
76										19.7	18.8	17.6	16.8	15.5	
80											16.9	15.7	15	13.7	
84												14	13.3	12.1	
88													11.8	10.6	
92														10.4	9.2
96															7.9

3.9 LIFTING PERFORMANCE

Luffing Jib (Working Mode: SW)

Luffing Jib Lifting Capacity Table															
Main boom length: 63m Rear counterweight: 210t Central counterweight: 60t Main boom angle: 75°															
Radius(m)	24	30	36	42	48	54	60	66	72	78	84				
32	79.9														
34	73.9	73													
36	68.6	67.8	66.3												
38	64	63.2	61.8												
40	59.8	59.1	57.8	56.6											
44		52.1	50.9	49.8	48.3	47.3									
48			46.2	45.2	44.2	42.8	41.8	40.4							
52				40.4	39.5	38.2	37.2	35.8	34.6	32.2					
56					35.5	34.2	33.3	31.9	30.8	28.9	27.5				
60						31.9	30.8	29.9	28.6	27.5	26	24.7	22.6		
64							27.8	27	25.7	24.6	23.2	22.2	20.1		
68								24.4	23.2	22.1	20.7	19.9	17.9		
72									20.9	19.9	18.5	17.7	15.9		
76										18.8	17.9	16.5	15.7	14.1	
80											16	14.8	14	12.5	
84												13.1	12.4	11	
88													11.6	10.9	9.7
92														9.6	8.3
96															7.1
100															5.9

Luffing Jib Lifting Capacity Table															
Main boom length: 39m Rear counterweight: 210t Central counterweight: 60t Main boom angle: 65°															
Radius(m)	24	30	36	42	48	54	60	66	72	78	84				
36	69.4														
38	64.7														
40	60.5	59.8													
44		52.8	51.5												
48			46.8	45.8	44.7										
52				41	40	38.7	37.7								
56					35.9	34.7	33.8	32.4							
60						32.3	31.3	30.4	29.1	27.9					
64							28.2	27.4	26.1	25	23.6				
68								24.8	23.6	22.5	21.1	20.2			
72									22.4	21.3	20.2	18.9	18	16.7	
76										19.2	18.2	16.9	16.1	14.7	
80											16.3	15.1	14.3	13	
84												13.4	12.7	11.4	
88													11.9	11.2	9.9
92														9.8	8.6
96															7.4
100															6.2

3.9 LIFTING PERFORMANCE

Luffing Jib (Working Mode: SW)

Luffing Jib Lifting Capacity Table													
Main boom length: 45m Rear counterweight: 210t Central counterweight: 60t Main boom angle: 65°													
Radius(m)	24	30	36	42	48	54	60	66	72	78	84		
38	61.9												
40	57.9												
44	51	50.3											
48		44.7	43.5	42.3									
52			38.9	37.8	36.4								
56			34.9	34	32.6	31.6							
60				30.6	29.4	28.4	27						
64					26.5	25.6	24.2	23.1					
68					23.9	23.1	21.8	20.6	19.2				
72						20.8	19.6	18.5	17.1	16.2	14.8		
76							17.6	16.6	15.2	14.4	13		
80								15.8	14.8	13.5	12.7	11.3	
84									13.2	11.9	11.2	9.8	
88										10.5	9.8	8.4	
92											9.1	8.5	7.2
96												7.3	6

Luffing Jib Lifting Capacity Table													
Main boom length: 51m Rear counterweight: 210t Central counterweight: 60t Main boom angle: 65°													
Radius(m)	24	30	36	42	48	54	60	66	72	78	84		
40	55.2												
44	48.6	47.7											
48	43	42.5	41.1										
52		38	36.7	35.5									
56			33	31.9	30.5								
60				28.7	27.4	26.3							
64				25.9	24.7	23.7	22.3	21					
68					22.2	21.3	19.9	18.8	17.2				
72						19.2	17.9	16.7	15.2	14.3			
76							17.3	16.1	14.9	13.5	12.6	11.2	
80								14.4	13.3	11.9	11	9.6	
84									11.8	10.4	9.6	8.2	
88										10.4	9.1	8.3	6.9
92											7.8	7.1	5.7
96												6	

3.9 LIFTING PERFORMANCE

Luffing Jib (Working Mode: SW)

Luffing Jib Lifting Capacity Table												
Main boom length: 57m Rear counterweight: 210t Central counterweight: 60t Main boom angle: 65°												
Radius(m)	24	30	36	42	48	54	60	66	72	78	84	
44	45.8											
48	40.6	39.8										
52		35.6	34.2									
56		31.9	30.7	29.5	28							
60			27.6	26.5	25.1	24						
64				23.9	22.5	21.5	20					
68				21.5	20.3	19.3	17.8	16.6				
72					18.2	17.3	15.9	14.7	13.1			
76						15.5	14.2	13	11.5	10.6		
80							12.6	11.5	10	9.1	7.6	
84								11.2	10.1	8.7	7.8	6.3
88									8.8	7.4	6.6	5.1
92										6.3	5.5	
96											5.2	

Luffing Jib Lifting Capacity Table											
Main boom length: 63m Rear counterweight: 210t Central counterweight: 60t Main boom angle: 65°											
Radius(m)	24	30	36	42	48	54	60	66	72	78	84
48	38.3										
52	34.2	33.4	31.8								
56		30	28.6	27.3							
60			25.7	24.5	23						
64			23.1	22	20.6	19.5					
68				19.9	18.5	17.4	15.9				
72					16.6	15.6	14.1	12.9			
76					14.8	13.9	12.5	11.3	9.7	8.5	
80						12.4	11.1	9.9	8.3	7.2	5.2
84							9.7	8.6	7	6	
88								8.4	7.4	5.9	
92									6.2		

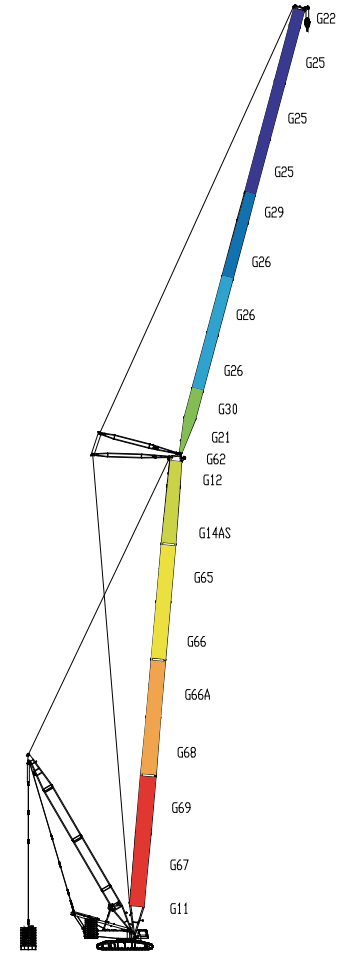
3.10 LIFTING PERFORMANCE

Superlift Luffing Jib on Main Boom
(Working Mode: SWDB/ SWD)

Codes	G21	G30	G26	G29	G25	G22
Length(m)	7.8	6	12	6	12	4.2
30	1	0	1	1	0	1
36	1	1	1	1	0	1
42	1	0	2	1	0	1
48	1	1	2	1	0	1
54	1	0	3	1	0	1
60	1	1	3	1	0	1
66	1	0	3	1	1	1
72	1	1	3	1	1	1
78	1	0	3	1	2	1
84	1	1	3	1	2	1
90	1	0	3	1	3	1
96	1	1	3	1	3	1

Remark:

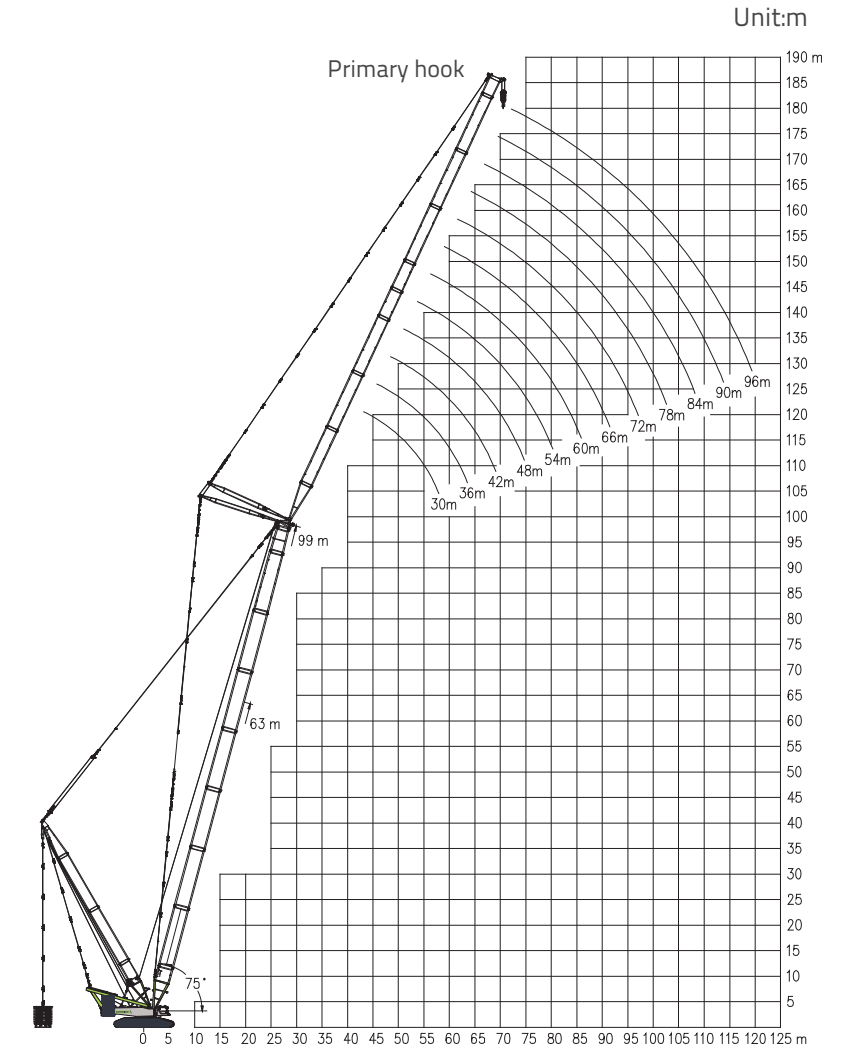
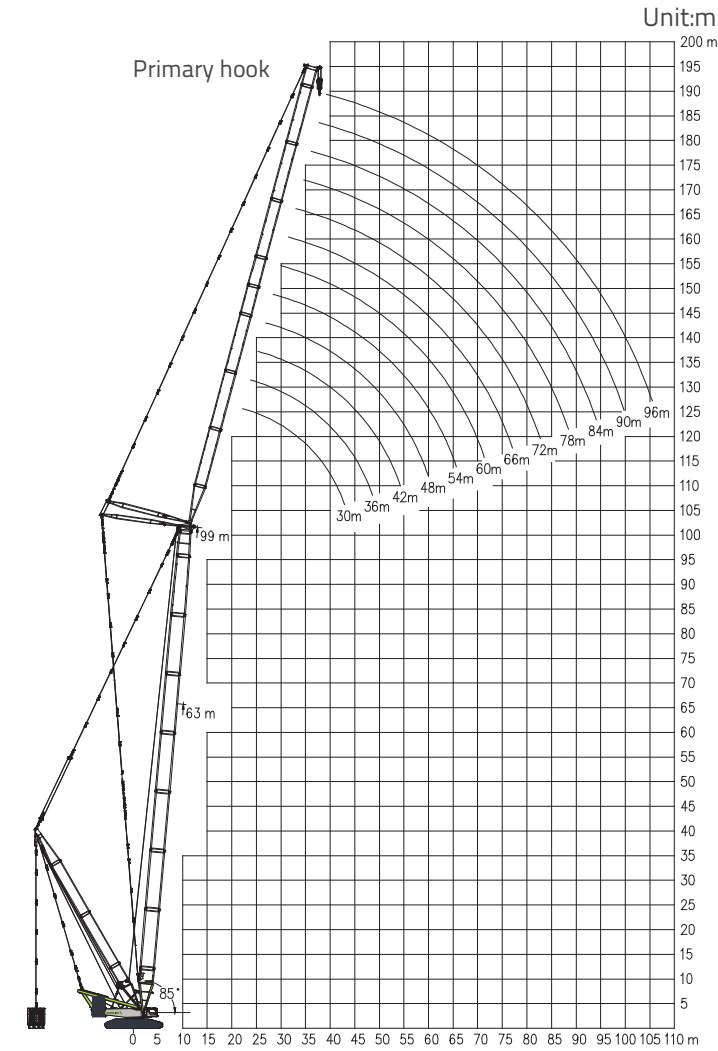
- Main boom in SWDB mode is the same as SDB-1
- Main boom length: 63-69m



Superlift luffing jib on main boom(with derrick boom and suspended ballast)
Lifting combination SWDB (SDB-1:63-99m,W:30-96m)

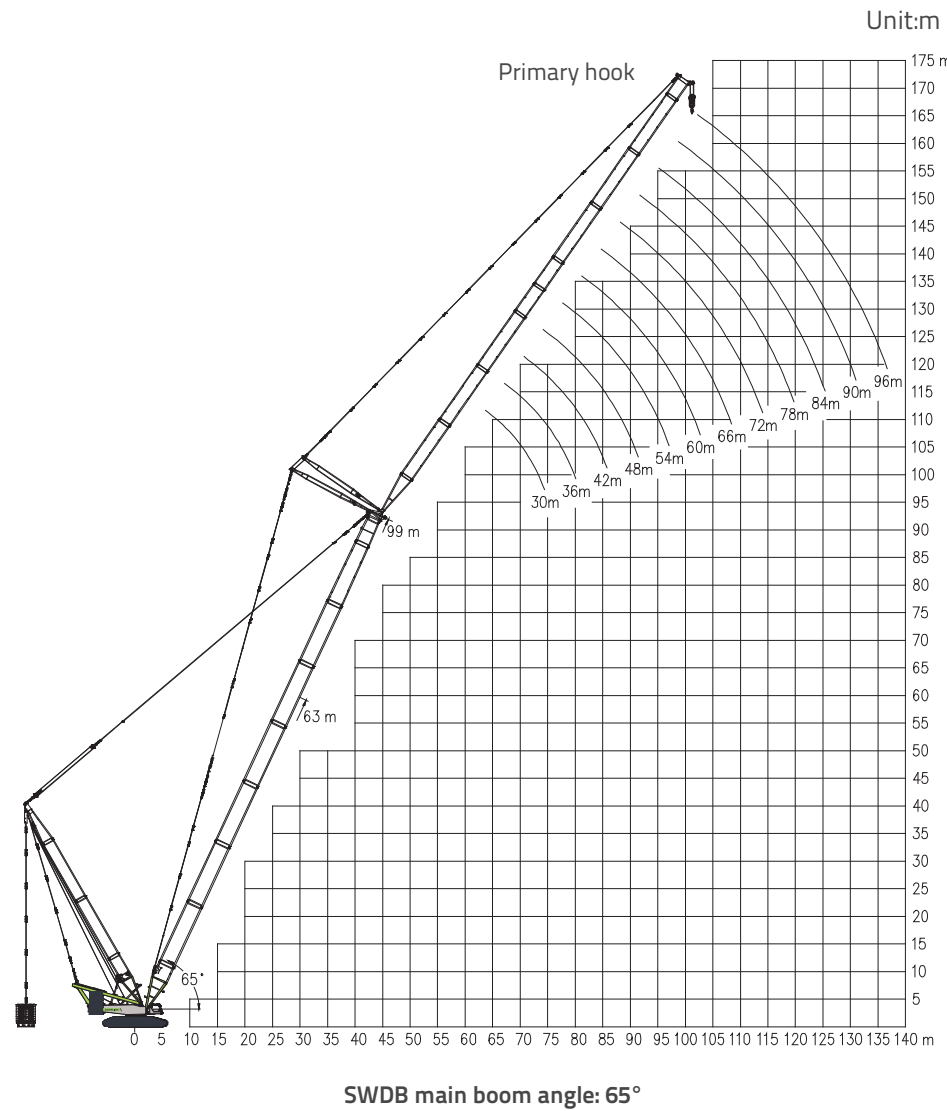
3.10 LIFTING PERFORMANCE

Superlift Luffing Jib on Main Boom
(Working Mode: SWDB/ SWD)



3.10 LIFTING PERFORMANCE

Superlift Luffing Jib on Main Boom
(Working Mode: SWDB/SWD)



Superlift Luffing Jib Lifting Capacity Table															
Main boom length: 63m Rear counterweight: 210t Central counterweight: 60t Suspended ballast: 300t Superlift radius: 20m Main boom angle: 85°															
Radius(m)	30	36	42	48	54	60	66	72	78	84	90	96			
18	325														
20	325	294													
22	325	294	262												
24	290	291	262	224	187										
26	258	258	258	224	187	159									
28	232	232	232	224	187	159	136								
30	211	211	210	209	187	159	136	116							
32	193	193	193	191	186	158	135	115	98	84.5					
34	178	178	178	176	175	156	133	114	97.9	84.3	67.7				
36	160	165	165	163	162	155	132	113	97.7	84	67.7	61.7			
38		154	153	152	151	149	131	112	97.4	83.7	67.7	61.3			
40		143	144	142	141	140	129	111	97.2	83.3	67.7	60.8			
44			127	126	125	123	122	109	96.6	82.5	67.7	60			
48			106	113	112	110	109	107	95.9	81.7	67.7	59			
52				98.3	101	99.6	98.2	96.6	94.6	80.8	67.2	58			
56					90.2	90.6	89.2	87.7	86.6	79.5	66.4	57.1			
60						82.2	81.7	80.1	79	77.4	65.5	55.9			
64							72	75.1	73.6	72.5	70.9	64.7	54.2		
68								66.8	68	66.9	65.3	62.4	52.4		
72									61.3	61.9	60.4	57.5	48.2		
76										54.3	56.6	56.1	53.2	44.4	
80											50.7	51.8	49.2	40.7	
84												46.7	45.5	37.5	
88													41.5	34.3	
92														38.4	31.5
96															28.8
100															26.6

3.10 LIFTING PERFORMANCE

Superlift Luffing Jib on Main Boom
(Working Mode: SWDB/SWD)

Superlift Luffing Jib Lifting Capacity Table															
Main boom length: 75m Rear counterweight: 210t Central counterweight: 60t Suspended ballast: 300t Superlift radius: 20m Main boom angle: 85°															
Radius(m)	30	36	42	48	54	60	66	72	78	84	90	96			
20	325														
22	314	280	237												
24	300	272	237	202											
26	274	261	237	202	172										
28	245	245	228	201	171	146									
30	221	222	218	199	169	145	124	106							
32	202	202	202	192	168	143	123	105	90.8						
34	186	186	185	184	166	142	122	104	89.9	77.8					
36	171	172	171	170	164	141	121	103	89	77.7	66.7	57.4			
38		160	159	158	157	139	119	102	88.1	77.6	66.5	57.1			
40		149	149	147	146	138	118	101	87.2	77.4	66.3	56.9			
44			131	130	129	127	117	99.9	86.3	76.9	65.7	56.3			
48			113	116	115	113	112	98.9	85.4	76.3	65.1	55.6			
52				103	104	102	101	97.9	84.6	75.7	64.4	54.8			
56					94	92.8	91.4	89.9	83.7	75.1	63.6	54.1			
60						81.4	84.9	83.5	82	80.8	74.5	62.9	53.3		
64							75.2	76.8	75.2	74.1	72.5	62.2	52.5		
68								69.3	69.4	68.2	66.7	61.5	51.6		
72									60.9	63.5	63.2	61.6	58.8	49.3	
76										56.6	58.5	57.2	54.3	45.3	
80											52.6	53.2	50.2	41.7	
84												46.5	48.3	46.4	38.3
88													43.3	43	35.1
92														39.9	32.2
96															29.5
100															27.2

Superlift Luffing Jib Lifting Capacity Table																	
Main boom length: 87m Rear counterweight: 210t Central counterweight: 60t Suspended ballast: 300t Superlift radius: 20m Main boom angle: 85°																	
Radius(m)	30	36	42	48	54	60	66	72	78	84	90	96					
20	269																
22	260	235															
24	247	227	205														
26	236	218	201	175	149												
28	226	210	194	173	147	128											
30	213	200	186	172	146	126	110										
32	200	189	178	166	144	125	109	94.7									
34	188	179	169	159	143	124	107	93.8	81.7	70.3							
36	175	169	161	152	141	123	106	92.9	80.9	69.6	60.7						
38	162	158	152	145	137	121	105	91.9	80	68.9	60.7	52.4					
40		149	143	138	131	118	104	91	79.2	68.2	60.7	52.3					
44			131	131	124	120	114	103	90.1	78.5	67.6	60.4	51.9				
48				117	114	108	104	99.7	89.2	77.7	66.9	60	51.5				
52					102	100	96.6	92.2	87.9	76.9	66.2	59.6	51				
56						91.5	90.4	88.7	84.9	81.6	76.1	65.6	59.1	50.5			
60							81.5	80.6	79.1	75.6	71.8	64.9	58.6	49.9			
64								73.1	72.3	69.9	67.6	64.2	58.1	49.3			
68									66	65.3	62.9	60.8	57.3	48.8			
72										60.3	60	58.4	56.9	54	48.3		
76											55.1	54.3	53.1	50.7	46.4		
80												50.5	49.6	47.7	42.6		
84													47.1	45.9	44.8	39	
88														43	42.1	35.8	
92															39.6	32.9	
96																36.8	30.2
100																	27.7

3.10 LIFTING PERFORMANCE

Superlift Luffing Jib on Main Boom
(Working Mode: SWDB/SWD)

Superlift Luffing Jib Lifting Capacity Table														
Main boom length: 99m Rear counterweight: 210t Central counterweight: 60t Suspended ballast: 300t Superlift radius: 20m Main boom angle: 85°														
Radius(m)	30	36	42	48	54	60	66	72	78	84	90	96		
22	213													
24	205	188	165											
26	195	181	163	143										
28	186	173	161	141	124									
30	176	166	155	140	122	107								
32	169	157	149	138	121	106	93.5	81						
34	159	149	138	135	120	105	92.5	80.2	70.5					
36	150	143	132	129	119	104	91.6	79.3	69.8	61.4				
38	140	135	127	123	116	103	90.7	78.6	69.1	60.8	54.5	47.5		
40		128	123	114	106	102	89.8	77.8	68.4	60.2	54	47		
44		113	109	106	100	95.6	88.9	77	67.7	59.6	53.5	46.5		
48			101	95.5	93.3	89.7	83.2	76.2	67.1	59	52.9	46.1		
52				88.6	84	82.2	79.1	73	66.4	58.4	52.4	45.6		
56				79.6	78.3	74.5	72.9	70.3	64.4	57.8	51.9	45.1		
60					70.8	69.8	67.1	65.1	60.2	56.8	51.3	44.7		
64						63.5	62.1	60.2	57.6	53.6	50.8	44.2		
68						57.7	57.3	55.6	54.2	52.6	48.4	43.8		
72							52.4	52	50.4	49.1	45.5	43.4		
76								47.8	46.8	45.2	44.2	42		
80									43.9	43.6	42.2	41.7	39.7	
84										40.7	39.5	39.1	37.4	
88											37.9	36.7	35.2	
92												35.7	34.5	33.2
96													32.4	30.9
100														28.4

Superlift Luffing Jib Lifting Capacity Table																
Main boom length: 63m Rear counterweight: 210t Central counterweight: 60t Suspended ballast: 300t Superlift radius: 20m Main boom angle: 75°																
Radius(m)	30	36	42	48	54	60	66	72	78	84	90	96				
34	276															
36	258	257														
38	242	241														
40	220	220	220													
44	185	185	184	183	175											
48		159	158	157	156	147										
52		140	139	137	136	135	124	104								
56			123	122	121	119	118	103	87.9							
60				110	109	107	106	102	87	74.1	62.2					
64					99.3	98.5	97	95.6	94	86.2	73.4	61.5	52.4			
68						90.1	88.4	87.1	85.5	84.4	72.6	60.9	52.3			
72							81.2	79.8	78.2	77.1	71.9	60.3	52			
76								73.5	73.6	72	70.9	69.3	59.7	51.7		
80									68.2	66.6	65.4	63.9	59.1	51.3		
84										61.9	60.7	59.2	56.4	47.1		
88											55.9	56.5	55	52.1	43.3	
92												52.2	51.3	48.2	39.7	
96													48	44.6	36.5	
100														41.2	33.6	
104															38.3	30.8
108																28.3

3.10 LIFTING PERFORMANCE

Superlift Luffing Jib on Main Boom
(Working Mode: SWDB/SWD)

Superlift Luffing Jib Lifting Capacity Table																
Main boom length: 75m Rear counterweight: 210t Central counterweight: 60t Suspended ballast: 300t Superlift radius: 20m Main boom angle: 75°																
Radius(m)	30	36	42	48	54	60	66	72	78	84	90	96				
	240															
	226	225														
	202	201	200													
	178	178	178	176	164											
		154	153	152	151	139	113									
		136	135	134	133	131	112	96.1								
			120	119	118	116	110	95.1	81.5	67.9						
				107	106	105	103	94.2	80.7	67.2	57.7					
					96.3	96.5	94.9	93.6	92	79.9	66.5	57.2	48.8			
						88.4	86.7	85.3	83.8	79.1	65.9	56.6	48.3			
							79.7	78.3	76.8	75.6	65.2	56	47.9			
								72.3	70.7	69.6	64.6	55.5	47.4			
									66.8	65.5	64.3	62.8	54.9	46.9		
										60.9	59.7	58.2	54.4	46.2		
											55.7	54.2	51.1	42.5		
												51.2	50.6	47.3	39	
													47.3	43.7	35.8	
														40.5	32.9	
															37.8	30.2
																27.7

Superlift Luffing Jib Lifting Capacity Table																
Main boom length: 87m Rear counterweight: 210t Central counterweight: 60t Suspended ballast: 300t Superlift radius: 20m Main boom angle: 75°																
Radius(m)	30	36	42	48	54	60	66	72	78	84	90	96				
40	222															
44	199	197														
48	180	178	177	174												
52	164	162	161	160	148											
56		149	148	147	146	126	102									
60			131	130	129	125	101	88	72.8							
64				118	116	115	114	100	87.1	72.1	62.5					
68					105	104	102	99.7	86.2	71.3	61.9	53.4	45.7			
72						94.6	93	91.6	85.4	70.6	61.2	52.9	45.2			
76							86.7	85	83.7	82.1	69.9	60.6	52.3	44.8		
80								78.3	76.9	75.3	69.2	60	51.8	44.3		
84									71.1	69.5	68.4	59.4	51.3	43.9		
88										65.2	64.4	63.3	58.8	50.8	43.4	
92											60	58.8	57.3	50.3	43	
96												54.8	53.3	49.8	41.7	
100													50.1	49.8	46.4	38.3
104														46.4	43	35.2
108															40	32.2
112																29.5
116																27.3

3.10 LIFTING PERFORMANCE

Superlift Luffing Jib on Main Boom
(Working Mode: SWDB/SWD)

Superlift Luffing Jib Lifting Capacity Table														
Main boom length: 99m Rear counterweight: 210t Central counterweight: 60t Suspended ballast: 300t Superlift radius: 20m Main boom angle: 75°														
Radius(m)	30	36	42	48	54	60	66	72	78	84	90	96		
44	194													
48	175	174	170											
52	160	158	157	147										
56	147	145	144	143	127	103								
60		134	133	132	125	102	89.8							
64			123	122	121	101	88.9	77.7	64.4					
68			115	113	112	100	88	76.9	63.7	55.8				
72				103	101	99.4	87.1	76.2	63.1	55.2	49	41.2		
76					92.7	91.1	86.2	75.4	62.5	54.6	48.5	40.8		
80					84.1	83.4	82.1	74.6	61.8	54.1	48	40.4		
84						77	75.5	73.9	61.2	53.6	47.5	40		
88							69.9	68.3	60.6	53	47.1	39.6		
92								63.4	60	52.5	46.6	39.2		
96									59	57.9	52	46.1	38.8	
100										54	51.4	45.7	38.4	
104											49.1	45.2	37.6	
108												45.5	42.3	34.5
112													39.3	31.6
116														29.1
120														26.8

Superlift Luffing Jib Lifting Capacity Table														
Main boom length: 63m Rear counterweight: 210t Central counterweight: 60t Suspended ballast: 300t Superlift radius: 20m Main boom angle: 65°														
Radius(m)	30	36	42	48	54	60	66	72	78	84	90	96		
52	160	159												
56	147	146	145											
60		135	134	132										
64			124	123	121									
68			115	114	113	112								
72				105	104	103	101							
76					94.9	93.3	92	90.4	75.7					
80					87.1	85.4	84	82.4	74.9	63.6				
84						78.6	77.2	75.6	74.2	62.9	53.3			
88							71.3	69.7	68.6	62.3	52.8	45.5		
92							66.3	64.6	63.5	61.7	52.2	45.1		
96								60.2	59	57.5	51.7	44.6		
100									55	53.5	50.4	41.9		
104										51.5	49.9	46.7	38.5	
108											46.8	43.2	35.2	
112												40.1	32.5	
116													37.2	29.8
120														27.3

3.10 LIFTING PERFORMANCE

Superlift Luffing Jib on Main Boom
(Working Mode: SWDB/SWD)

Superlift Luffing Jib Lifting Capacity Table															
Main boom length: 75m Rear counterweight: 210t Central counterweight: 60t Suspended ballast: 300t Superlift radius: 20m Main boom angle: 65°															
Radius(m)	30	36	42	48	54	60	66	72	78	84	90	96			
56	144														
60	133	132													
64		122	121	120											
68		114	113	111	110										
72			105	104	103	102									
76				97.9	96.9	95.5	94.3								
80				92	91.1	89.8	88.6	85.5							
84					85.9	84.6	83.4	81.9	71.6						
88						79.8	78.8	77.3	70.8	59.9	48.7				
92							74.3	72.8	71.2	70.1	59.3	48.2	41.9		
96								67.6	65.9	64.8	58.7	47.7	41.5		
100									61.3	60.1	58.2	47.3	41		
104										56	54.5	46.8	40.6		
108											52.4	50.9	46.3	39.3	
112												47.6	44.2	36.1	
116													40.8	33.1	
120														38	30.5
124															28

Superlift Luffing Jib Lifting Capacity Table																
Main boom length: 87m Rear counterweight: 210t Central counterweight: 60t Suspended ballast: 300t Superlift radius: 20m Main boom angle: 65°																
Radius(m)	30	36	42	48	54	60	66	72	78	84	90	96				
60	128															
64	119	118														
68	111	110	108													
72		102	101	100												
76			95.2	93.8	92.7	91.2										
80				88.2	87.2	85.7	84.5									
84					83.2	82.2	80.8	79.5	76.9							
88						77.6	76.3	75.1	73.5	64.8						
92							72.1	71	69.5	64.2	54.7					
96								68.3	67.3	65.8	63.5	54.1	46			
100									63.8	62.4	61.5	53.6	45.6	39.5		
104										59.2	58.4	53	45.1	39.1		
108											56.3	55.5	52.5	44.7	38.8	
112												52.8	51.5	44.2	38.4	
116													48.4	43.8	36.9	
120														45.5	41.7	33.8
124															38.7	31.1
128																28.6

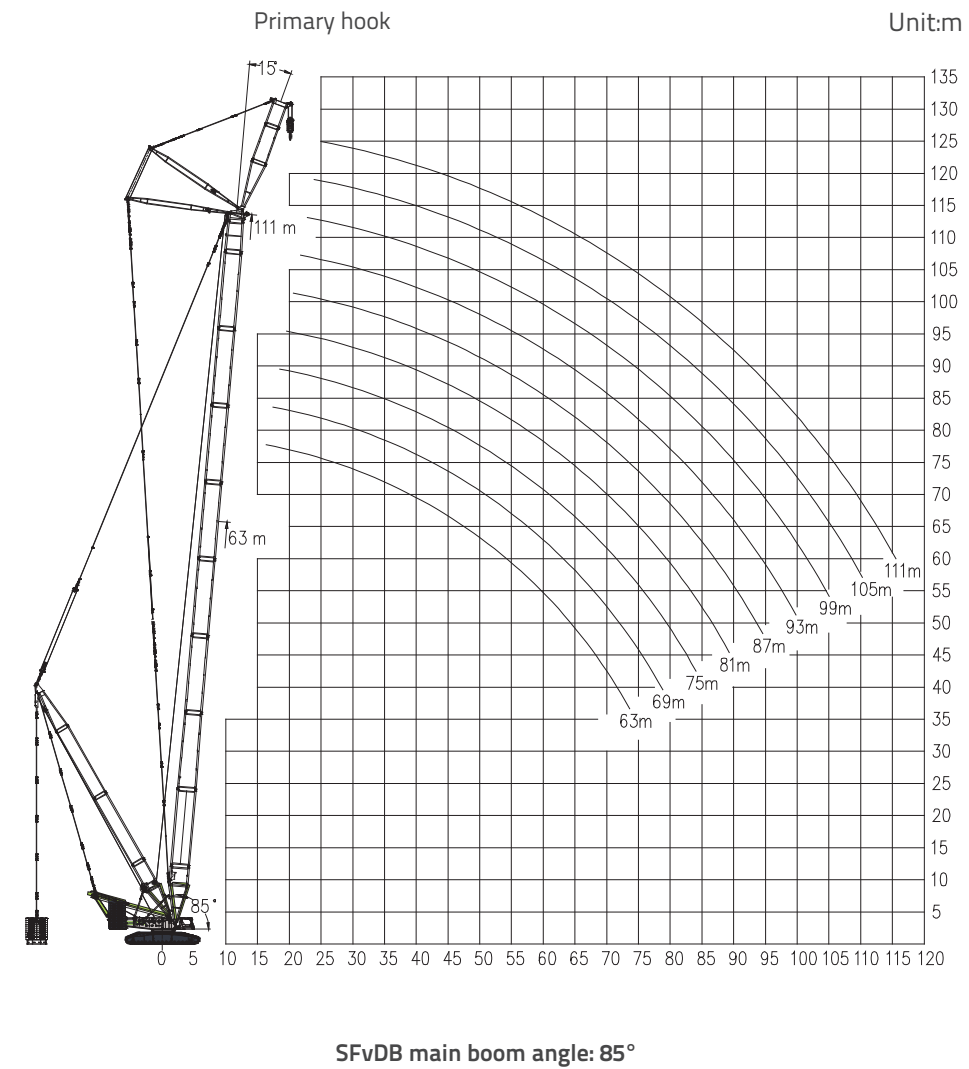
3.10 LIFTING PERFORMANCE

Superlift Luffing Jib on Main Boom
(Working Mode: SWDB/SWD)

Superlift Luffing Jib Lifting Capacity Table															
Main boom length: 99m Rear counterweight: 210t Central counterweight: 60t Suspended ballast: 300t Superlift radius: 20m Main boom angle: 65°															
Radius(m)	30	36	42	48	54	60	66	72	78	84	90	96			
64	113														
68	106	104													
72	99.1	97.7	96.4												
76		91.6	90.4	88.9											
80			85	83.6	82.4										
84			80.2	78.8	77.7	76.2									
88				74.4	73.4	71.9	70.6	65.9							
92					69.4	68	66.8	65.2	56.2						
96						65.8	64.4	63.2	61.7	55.6	47.8				
100							61.1	60	58.4	55.1	47.4	41.6			
104								57	55.5	54.5	46.9	41.2	35.4		
108									54.2	52.7	51.8	46.4	40.7	35	
112										50.1	49.2	46	40.3	34.7	
116											46.7	45.1	39.9	34.3	
120												42.8	39.5	34	
124													40.6	39.1	33.6
128														37.4	31.8
132															29.3
136															26.9

3.11 LIFTING PERFORMANCE

Superlift Heavy Fixed Jib on Main Boom
(Working Mode: SFVDB/SFVD)



Superlift Luffing Jib on Main Boom
(Working Mode: SWDB/SWD)

Superlift Heavy Fixed Jib Lifting Capacity Table											
Jib length: 18m Rear counterweight: 210t Central counterweight: 60t Suspended ballast: 300t Superlift radius: 20m Included angle between main boom and jib: 15°											
Radius(m)	63	69	75	81	87	93	99	105	111		
19	360										
20	360	360									
22	360	360	360	355	318						
24	360	360	360	352	314	278	247	220			
26	352	352	352	348	312	276	245	218	191		
28	326	325	325	324	307	273	242	216	189		
30	302	301	302	300	300	270	240	213	187		
32	282	281	281	280	280	265	236	211	185		
34	264	262	263	262	261	260	234	208	183		
36	248	246	247	246	245	243	230	205	181		
38	233	232	233	231	230	229	227	203	179		
40	219	219	219	219	217	216	214	200	176		
44	197	196	197	195	194	193	191	187	171		
48	177	175	177	175	174	173	171	169	165		
52	159	158	159	158	157	153	153	153	150		
56	143	143	143	143	142	141	137	137	137		
60	129	129	129	129	129	127	124	124	123		
64	119	118	119	116	116	114	114	111	111		
68	107	107	107	107	105	105	103	101	101		
72	101	98	101	98	98	95	95	93	91		
76		89	93	89	89	87	85	85	85		
80			85	84	82	80	80	77	77		
84				79	77	75	73	71	70		
88					71	70	68	67	66	64	
92						64	64	61	59	59	
96							59	55	54	54	
100								52	52	50	49

4.1 MAIN CONFIGURATIONS AND SUPPLIERS

Item	Mechanisms and components		Qty	Supplier/Country
1	Main/Aux hoisting mechanism	Winch reducer	2	Rexroth/Germany
		Hydraulic motor		
		Balance valve	2	Bucher/Germany
2	Main derricking mechanism	Winch reducer	1	Rexroth/Germany
		Hydraulic motor		
		Balance valve	1	Bucher/Germany
3	Superlift derricking mechanism	Winch reducer	1	Rexroth/Germany
		Hydraulic motor		
		Balance valve	1	Bucher/Germany
4	Luffing derricking mechanism	Winch reducer	1	Rexroth/Germany
		Hydraulic motor		
		Balance valve	1	Bucher/Germany
5	Slewing mechanism	Slewing reducer	2	Rexroth/Germany
		Hydraulic motor		
		Slewing bearing	1	LYC/China
6	Travel mechanism	Travel reducer+motor	4	O&K or Rexroth/Germany
7	Hydraulic pump	Main pump	1	Rexroth/Germany
			1	
		Slewing pump	1	
		Aux pump	1	
8	Main valve	Main valve 1	1	Rexroth/Germany
		Main valve 2	1	
		Main valve 3	1	
9	Engine	/	1	Benz/Germany Cummins/Britain

Item	Mechanisms and components		Qty	Supplier/Country
11	Wire rope	Main/Aux wire rope	2	Pfeifer or Diepa/Germany
		Main derricking wire rope	2	
		Luffing derricking wire rope	1	
		Superlift derricking wire rope	1	
12	Electrical system	LMI system	1	Hirschmann/Germany
		Controller /Modul	3	IFM/Germany

Note: The above configuration is only for reference and it's subjected to change according to the design and customer requirements, please consult our sales representatives for configurations.

