



# 600 SERIES

TELESCOPIC BOOM LIFTS



## Performance

<b>Platform Height</b>		
600S	60 ft 3 in.	18.36 m
660SJ	66 ft 8 in.	20.32 m
<b>Horizontal Outreach</b>		
600S	49 ft 6 in.	15.09 m
660SJ	56 ft 9 in.	17.3 m
<b>Swing</b>		
	360° Continuous	
<b>Platform Capacity</b>		
Restricted (600S)	1,000 lb	454 kg
Unrestricted	500 lb	227 kg
<b>Platform Rotator</b>		
600S	160° Hydraulic	
660SJ	180° Hydraulic	
<b>Weight</b>		
600S	21,800 lb	9,888 kg
660SJ	26,650 lb	12,088 kg
<b>Max. Ground Bearing Pressure</b>		
600S	67 psi	4.7 kg/cm <sup>2</sup>
660SJ	75 psi	5.27 kg/cm <sup>2</sup>
<b>Drive Speed 2WD</b>		
	4.25 mph	6.8 kmph
<b>Drive Speed 4WD</b>		
	4.25 mph	6.8 kmph
<b>Gradeability 2WD</b>		
	30%	
<b>Gradeability 4WD</b>		
	45%	
<b>Axle Oscillation</b>		
	8 in.	20 cm
<b>Turning Radius, Inside/Outside</b>		
2WS	7 ft 4 in./17 ft 7 in.	2.23 m/5.36 m
4WS	4 ft 7 in./9 ft 6 in.	1.41 m/2.89 m

1. Certain options or country standards increase weight



## Standard Features

- Oscillating Axle
- Hydraulic Platform Rotator
- 110V AC Receptacle in the Platform
- 5 Degree Tilt Alarm/Indicator Light
- Swing-Out Engine Tray
- 12V DC Auxiliary Power
- Hourmeter
- Control ADSystem
- All Motion Alarm
- Proportional Controls
- Gull-Wing Hoods
- Platform Console Machine Status Light Panel\*
- Engine Distress Warning/Shutdown—Selectable via JLG Analyzer

\*Provides indicator lights at platform control console for system distress, fuel level, low fuel, 5 degree tilt light and foot switch status.

## Standard Specifications

### Power Source

<b>Dual Fuel Engine</b>		
GM Vortec 3000 MPFI	82 hp	61 kW
<b>Diesel Engine</b>		
Deutz TD 2.9 L4	67 hp	50 kW
<b>Fuel Tank Capacity</b>		
	40 gal	151 L

### Hydraulic System

Capacity	32 gal	121 L
Auxiliary Power	12V DC	

### Tires

Standard	39 x 15-225 Lug Tread	
Optional	Foam-Filled	

## Accessories & Options

- 36 x 72 in. (0.91 x 1.83 m) Platform
- Fall Arrest Platform
- Inward Swinging Gate
- Mesh to Top Rail Bolt-on Aluminum 6 ft
- Mesh to Top Rail Bolt-on Aluminum 8 ft
- Soft Touch System
- Operators Tool Tray
- Tow Package
- 43.5 lb (19.7 kg) Propane Tank
- Cold Weather Start Kit (GM)
- Cold Weather Start Kit (Deutz)
- Hostile Environment Kit
- Light Package
- Platform Worklights
- Flashing Amber Beacon
- Lifting/Tie Down Lugs
- Arctic Package
- Accessory Packages:
  - SkyWelder®
  - SkyGlazier®
  - Nite Bright®
  - SkyCutter®
  - Pipe Rack
  - SkyAir®
  - SkyPower®

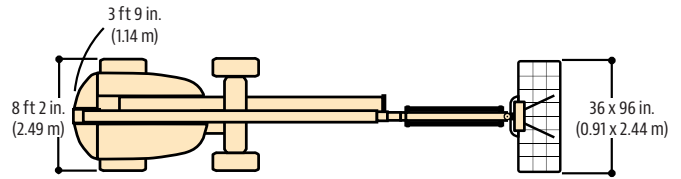
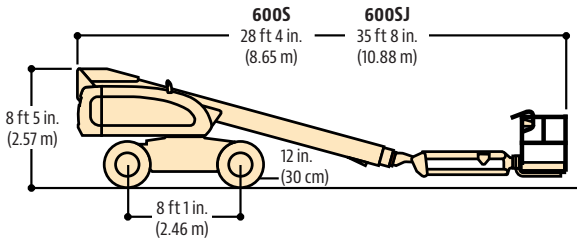
# 600 SERIES

TELESCOPIC BOOM LIFTS



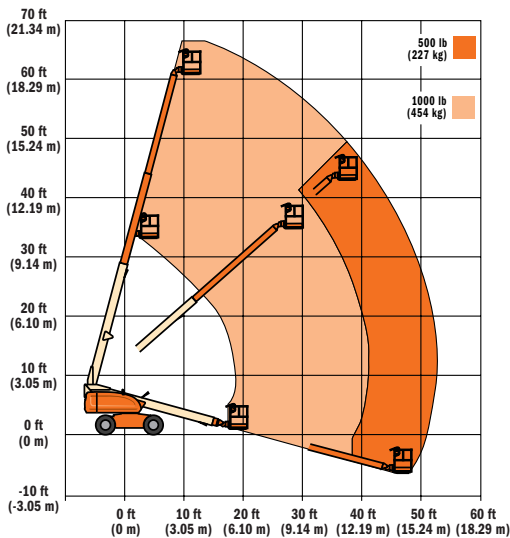
## Dimensions

All dimensions are approximate.

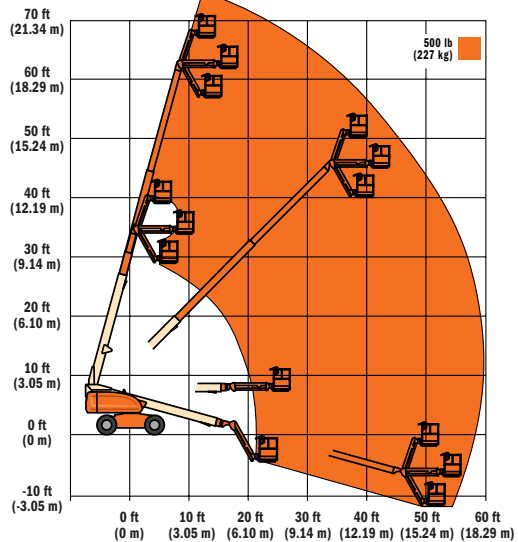


## Reach Dimensions

### 600S



### 660SJ



## The JLG "1 & 5" Warranty

JLG Industries, Inc. backs its products with its exclusive "1 & 5" Warranty. We provide coverage on all products for one (1) full year, and cover all specified major structural components for five (5) years. Due to continuous product improvements, we reserve the right to make specification and/or equipment changes without prior notification. This machine meets or exceeds applicable OSHA Regulations in 29 CFR 1910.67, 29 CFR 1926.453, ANSI A92.5-2006, and CSA Standard CAN3-B354.2-M82, as originally manufactured for intended applications.

Form No.: SS-600S-0204-15M  
 Part No.: 3131028  
 R031510  
 Printed in USA

**JLG Industries, Inc.**  
 1 JLG Drive  
 McConnellsburg, PA 17233-9533  
 Telephone 717-485-5161  
 Toll-free in US 877-JLG-LIFT  
 Fax 717-485-6417  
[www.jlg.com](http://www.jlg.com)

**An Oshkosh Corporation Company**