



# GROVE<sup>®</sup>

## GMK4080-1

### product guide

-  80 t
-  51 m
-  8,7 - 21 m
-  75 m



## Superstructure

### Boom

11,0 m to 51,0 m six section TWIN-LOCK™ boom.  
Maximum tip height 54,0 m.

### Boom elevation

1 cylinder with safety valve, boom angle from -3° to +82°.

### Load moment and independent anti-two block system

Load moment and independent anti-two block system with audio visual warning and control lever lock-out. These systems provide electronic display of boom angle, length, radius, tip height, relative load moment, maximum permissible load, load indication and warning of impending two-block condition with lock-out hoist function.

### Cab

Aluminium, tiltable (approx. 20°), full vision, safety glass, adjustable operator's seat with suspension, engine-independent heater. Armrest-integrated crane controls. Ergonomically arranged instrumentation and crane operating controls. Drive/steer controls.

### Slewing

2 slewing gears with axial piston motors, planetary gear, service brake and holding brake.

### Counterweight

9,3 tonnes, consisting of various sections. Hydraulic removal system.

### Hydraulic system

2 separate circuits, 1 axial piston variable displacement pump (load sensing), with electronic power limiting control and 1 gear pump for slewing. Thermostatically controlled oil cooler. Tank capacity: 680 l.

### Control system

Full electronic control of all crane movements using electrical control levers with automatic reset to zero. Integrated with the LMI and engine management system by CAN-BUS. ECOS system with graphic display.

### Hoist

Axial piston motor with planetary gear and brake. Drum rotation indicator.

### Electrical system

Three-phase alternator 28 V/80 A, 2 batteries 12 V/170 Ah.

### \* Optional equipment

Bi-fold swingaway, 8,7/15 m with hydraulic offset and luffing under load (0°-40°), controlled from the crane cab. Bi-fold swingaway, 8,7/15 m (manual offset 0°, 20°, 40°). Lattice extension, 21 m - includes 6m fixed non-offsettable section plus 8,7/15 m swingaway (see above). Additional 10 tonnes counterweight (total counterweight 19,3 tonnes). Auxiliary hoist.

## Carrier

### Chassis

Special 4-axle chassis, all-welded torsion-resistant box type construction in high strength steel.

### Outriggers

4 double hydraulically telescoping beams with vertical cylinders and outrigger pads. Independent horizontal and vertical movement control on each side of the carrier. Electronic level indicator with automatic levelling system.

### Engine

Mercedes-Benz OM501LA, diesel, 6 cylinders, water cooled, turbocharged, 290 kW (389 HP) at 1800 rpm (80/1269 EWG - fan loose). Max. torque: 1850 Nm at 1080 rpm. Fuel tank capacity: 400 l. Engine emission: EUROMOT / EPA / CARB tier (non road).

### Transmission

ZF-AS TRONIC automatic, 12 forward and 2 reverse speeds. Two speed transfer case with inter-axle differential lock.

### Drive/Steer

8 x 6 x 8

### Axle lines

4 axle lines. 1, 3 and 4 are driven steering axle lines, the 2nd is a steering axle line.

### Suspension

MEGATRAK®. All wheels with independent hydropneumatic suspension and hydraulic lockout. Longitudinal and transverse level control with automatic on-highway levelling system. Range +170 mm/-130 mm.

### Tyres

8 tyres, 14.00 R25.

### Steering

Dual circuit, hydraulic power assisted steering with emergency steering pump. Axle lines 1, 2, and 4 steer on highway. Separate steering of the 3rd, and 4th axle line for all wheel steering and crabbing.

### Brakes

Service brake: pneumatic dual circuit, acting on all wheels, air dryer. Anti-lock braking system (ABS). Permanent brake: exhaust brake and constant throttle brake. Parking brake: pneumatically operated spring-loaded brake acting on axle lines 2 and 4.

### Cab

Aluminium, 2-man-design, safety glass, driver and passenger seat with hydraulic suspension, engine-dependent hot water heater. Complete instrumentation and driving controls.

### Electrical system

Three-phase alternator 28 V/100A, 2 batteries 12 V/170 Ah. Lighting system and signals 24 V.

### \* Optional equipment

8 x 8 x 8.

Electric driveline retarder.

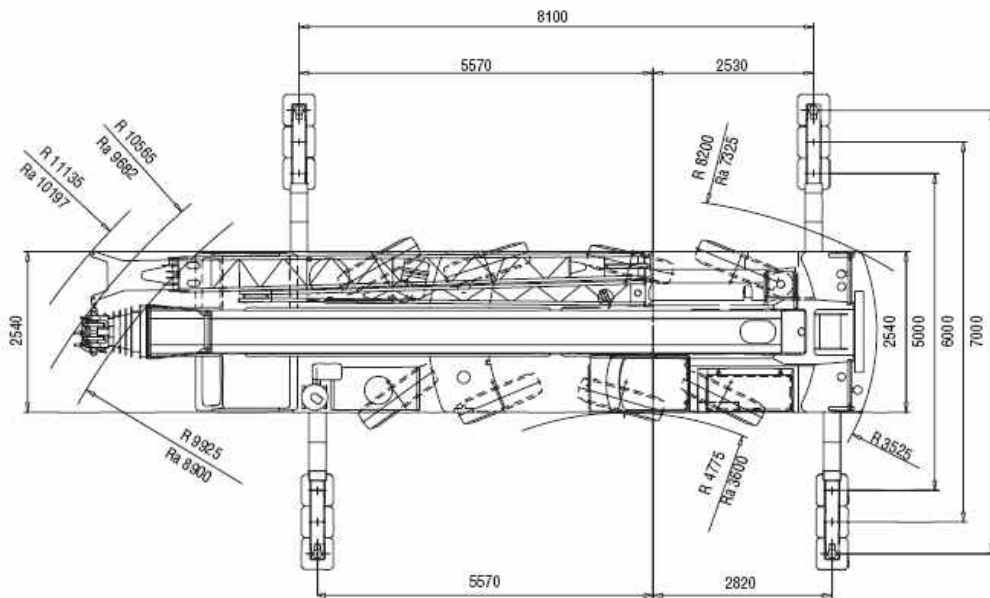
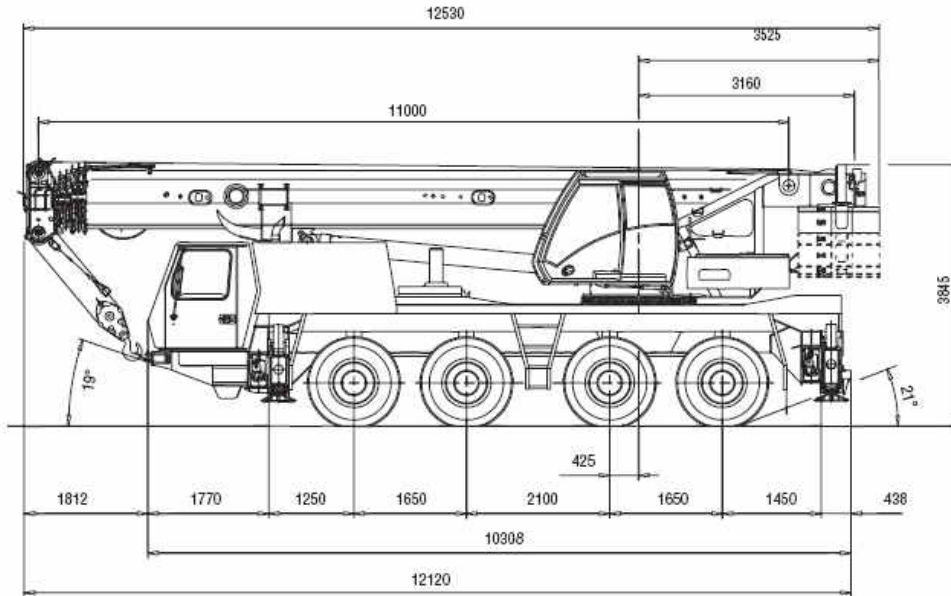
8 tyres, 16.00 R25 (vehicle width 2,75 m).

8 tyres, 20.5 R25 (vehicle width 2,88 m).

Engine-independent hot water heater, with engine pre-heater.

\*Further optional equipment upon request.

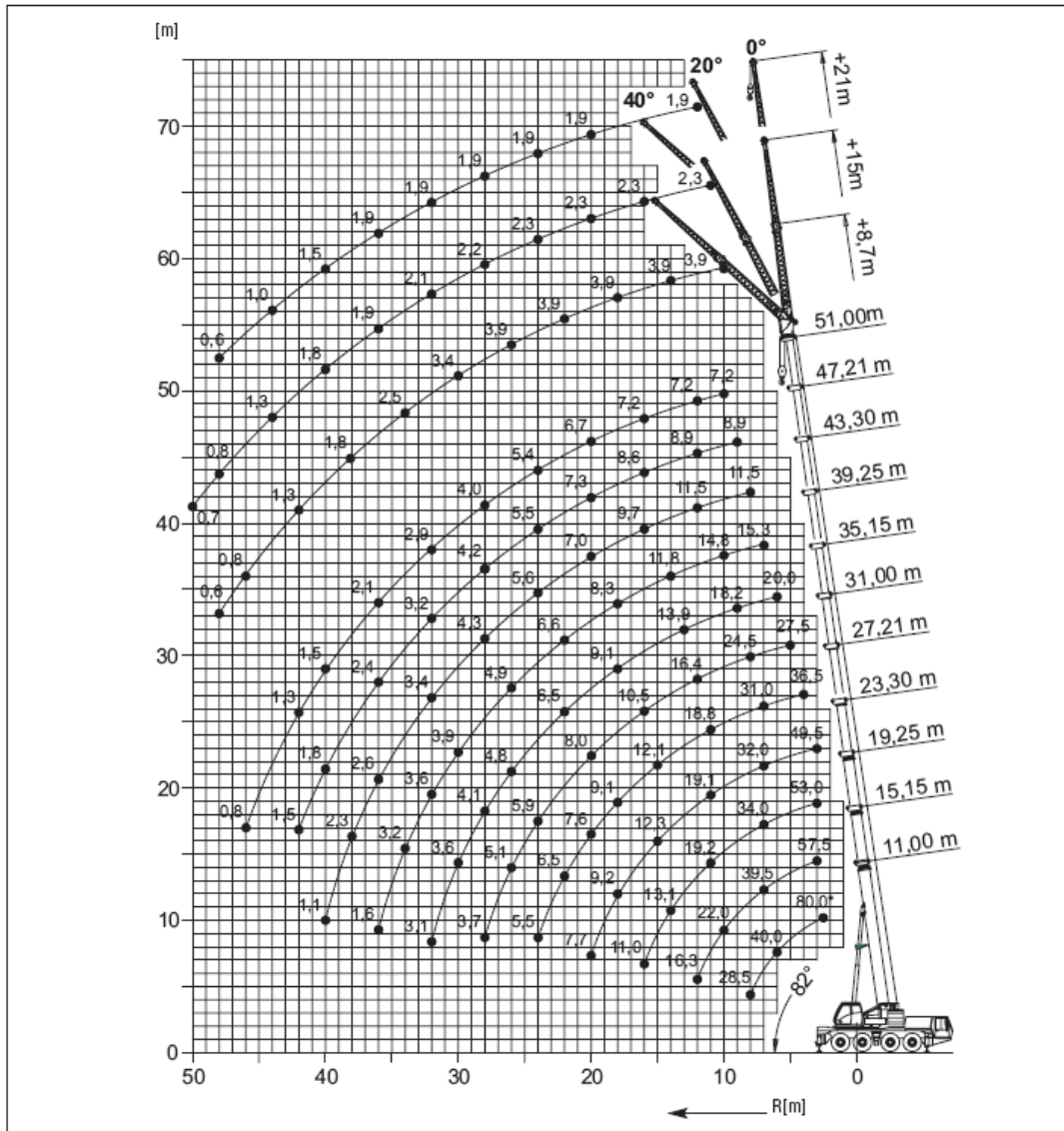
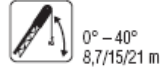
Dimensions • Abmessungen • Encombrement • Dimensiones • Dimensioni




Ra - Radius all wheels steered  
 Radius allradgelenkt  
 Rayon toutes les roues directrices  
 Radio de giro con todas las ruedas giradas  
 Raggio di curva con tutte le ruote sterzate

Load charts • Traglasten • Capacités de levage • Capacidades • Capacità

Working range • Arbeitsbereiche • Diagramme de levage • Gama de trabajo • Area di lavoro



	Hook block • Unterflasche • Crochet-moufle • Gancho • Ganci	
	(t)	H (mm)
	80D	3200
	63D	3000
	40D	2900
	16E	2800
	8 H/B	2350



# Load charts • Traglasten • Capacités de levage • Capacidades • Capacità

## Telescopic boom • Teleskopausleger • Flèche principale • Pluma telescópica • Braccio telescopico

		11,0-51,0 m		7,0 m		360°		19,3 t		EN 13000		
m		11,00	15,15	19,25	23,30	27,21	31,00	35,15	39,25	43,30	47,21	51,00
2,5	80,0°											
3,0	68,0											
4,0	53,5	57,5	53,0	49,5								
5,0	46,0	44,5	41,5	39,0	36,5							
6,0	40,0	39,5	38,0	35,0	33,5	28,5	20,0					
7,0	34,5	34,5	34,0	32,0	31,0	25,5	19,7	15,3				
8,0	28,5	30,0	30,0	28,5	28,0	24,5	19,3	15,3	11,5			
9,0		25,5	25,5	25,0	24,0	23,0	18,2	15,1	11,5	8,9		
10,0		22,0	22,0	22,5	21,0	20,5	17,1	14,8	11,5	8,9	7,2	
11,0		18,8	19,2	19,1	18,8	18,4	16,0	14,0	11,5	8,9	7,2	
12,0		16,3	16,7	16,6	17,2	16,4	15,0	13,3	11,5	8,9	7,2	
13,0			14,7	14,8	15,2	14,7	13,9	12,5	11,2	8,9	7,2	
14,0			13,1	13,7	13,5	13,1	12,6	11,8	10,8	8,9	7,2	
15,0			11,9	12,3	12,1	11,7	11,4	11,0	10,3	8,9	7,2	
16,0			11,0	11,1	11,0	10,5	10,5	10,1	9,7	8,6	7,2	
18,0				9,2	9,1	8,8	9,1	8,3	8,4	8,0	7,2	
20,0				7,7	7,6	8,0	7,6	7,1	7,0	7,3	6,7	
22,0					6,5	6,8	6,5	6,6	6,1	6,1	6,3	
24,0					5,5	5,9	5,5	5,7	5,6	5,5	5,4	
26,0						5,1	4,8	4,9	5,0	4,9	4,6	
28,0							3,7	4,1	4,3	4,2	4,0	
30,0								3,6	3,9	3,8	3,7	3,4
32,0								3,1	3,6	3,4	3,2	2,9
34,0									3,2	3,0	2,8	2,5
36,0									1,6	2,6	2,4	2,1
38,0										2,3	2,1	1,8
40,0										1,1	1,8	1,5
42,0											1,5	1,3
44,0												1,0
46,0												0,8

		11,0-51,0 m		7,0 m		360°		16,8 t		EN 13000		
m		11,00	15,15	19,25	23,30	27,21	31,00	35,15	39,25	43,30	47,21	51,00
2,5	80,0°											
3,0	68,0											
4,0	53,5	57,5	53,0	49,5								
5,0	46,0	44,5	41,5	39,0	36,5							
6,0	39,5	39,5	38,0	35,0	33,5	28,5	20,0					
7,0	33,5	34,0	34,0	32,0	31,0	25,5	19,7	15,3				
8,0	28,5	29,5	29,0	27,0	26,0	24,5	19,3	15,3	11,5			
9,0		24,5	24,0	24,0	22,5	22,0	18,2	15,1	11,5	8,9		
10,0		20,5	21,0	21,0	20,5	19,4	17,1	14,8	11,5	8,9	7,2	
11,0		17,6	18,0	17,9	18,4	17,2	16,0	14,0	11,5	8,9	7,2	
12,0		15,3	15,7	15,7	16,1	15,4	14,4	13,3	11,5	8,9	7,2	
13,0			13,8	14,4	14,2	13,8	12,9	12,5	11,2	8,9	7,2	
14,0			12,7	12,8	12,6	12,2	11,7	11,3	10,8	8,9	7,2	
15,0			11,4	11,5	11,3	10,9	10,9	10,2	10,1	8,9	7,2	
16,0			10,2	10,4	10,2	9,8	10,2	9,3	9,2	8,6	7,2	
18,0				8,6	8,4	8,8	8,4	7,7	7,7	7,8	7,2	
20,0				7,2	7,0	7,4	7,1	7,1	6,7	6,6	6,7	
22,0					5,9	6,3	6,0	6,1	6,1	6,0	5,8	
24,0					5,1	5,4	5,1	5,2	5,3	5,2	4,9	
26,0						4,7	4,3	4,7	4,5	4,5	4,2	
28,0							3,3	3,7	4,2	4,0	3,8	3,6
30,0								3,5	3,7	3,5	3,3	3,0
32,0									2,7	3,2	2,9	2,6
34,0										2,8	2,7	2,5
36,0										1,3	2,3	2,1
38,0											2,0	1,8
40,0											0,8	1,5
42,0												1,3
44,0												1,0
46,0												0,8

\*Over rear, \*Nach hinten, \*En arrière, \*Por la parte trasera, \*Sul posteriore