



700 SERIES MODEL 7260 CRAWLER CRANE with 59S Boom

LIFT RATINGS with 59S Tubular Chord Hammerhead Boom and "S-S" Counterweight (49,900 lbs.) (22635 kgs.)

METRIC

Boom Length Feet	Radius In Feet	Boom Angle Degrees	Rating In Pounds	Feet From Boom Point To Ground	Boom Length Meters	Radius In Meters	Boom Angle Degrees	Rating In Kilograms	Meters From Boom Point To Ground
40 feet	11	82.8	200000	46	12.2 meters	3.4	82.8	90720	14.0
	12	81.3	200000	46		3.7	81.3	90720	14.0
	15	77.0	175350	45		4.6	77.0	79540	13.7
	20	69.6	106600	44		6.1	69.6	48260	13.4
	25	61.7	76120	41		7.6	61.7	34520	12.5
	30	53.1	58840	38		9.1	53.1	28020	11.8
	35	43.3	47770	33		10.7	43.3	21670	10.1
40	30.9	40000	26	12.2	30.9	18140	7.9		
50 feet	13	81.9	198730	56	18.3 meters	4.0	81.9	90180	17.1
	15	79.6	175470	55		4.6	79.6	79590	16.8
	20	73.8	106620	54		6.1	73.8	48260	16.3
	25	67.7	76130	52		7.6	67.7	34520	15.8
	30	61.3	58810	50		9.1	61.3	28020	15.3
	35	54.5	47750	47		10.7	54.5	21680	14.3
	40	47.0	39980	42		12.2	47.0	18120	12.8
50	27.4	29860	29	18.3	27.4	12540	8.8		
60 feet	14	82.3	187000	66	18.3 meters	4.3	82.3	84820	20.1
	15	81.3	175510	65		4.6	81.3	79610	19.8
	20	76.5	106590	64		6.1	76.5	48320	19.5
	25	71.6	76110	63		7.6	71.6	34520	19.2
	30	66.5	58770	61		9.1	66.5	28020	18.8
	35	61.1	47720	59		10.7	61.1	21620	18.0
	40	55.5	39950	55		12.2	55.5	18120	16.8
50	42.6	29810	46	18.3	42.6	13520	14.0		
60	24.8	23550	31	18.3	24.8	10660	9.4		
70 feet	15	82.6	175470	75	21.3 meters	4.6	82.6	79590	22.9
	20	78.5	106500	75		6.1	78.5	48170	22.9
	25	74.3	76010	73		7.6	74.3	34480	22.3
	30	70.0	58650	72		9.1	70.0	28020	21.9
	35	65.6	47600	70		10.7	65.6	21590	21.3
	40	61.0	39820	67		12.2	61.0	18060	20.4
	50	51.0	29680	60		18.3	51.0	13460	18.3
60	39.3	23440	50	18.3	39.3	10630	15.2		
70	22.9	19100	33	21.3	22.9	8600	10.1		
80 feet	16	82.8	155390	85	24.4 meters	4.8	82.8	70480	25.9
	20	79.9	106400	85		6.1	79.9	48260	25.9
	25	76.3	75920	84		7.6	76.3	34440	25.6
	30	72.6	58540	82		9.1	72.6	28020	25.0
	35	68.8	47490	81		10.7	68.8	21540	24.7
	40	64.9	39710	78		12.2	64.9	18010	23.8
	50	58.6	29580	73		18.3	58.6	13410	22.3
60	47.5	23350	66	18.3	47.5	10580	19.8		
70	36.6	19020	53	21.3	36.6	8630	15.2		
80	21.3	15870	35	24.4	21.3	7200	10.7		
90 feet	17	83.0	139410	95	27.4 meters	5.2	83.0	63240	29.0
	20	81.0	108280	95		6.1	81.0	48210	29.0
	25	77.8	75780	94		7.6	77.8	34370	28.7
	30	74.5	58380	93		9.1	74.5	28480	28.5
	35	71.2	47340	91		10.7	71.2	21470	27.7
	40	67.8	39550	89		12.2	67.8	17940	27.1
	50	60.7	29390	85		18.3	60.7	13320	25.9
60	53.1	23200	78	18.3	53.1	10520	22.8		
70	44.6	18870	69	21.3	44.6	8660	21.0		
80	34.4	15720	57	24.4	34.4	7120	17.4		
90	20.0	13330	36	27.4	20.0	6060	11.0		
100 feet	19	82.5	115390	105	30.5 meters	5.8	82.5	52340	32.0
	20	81.9	106150	105		6.1	81.9	48120	32.0
	25	79.0	75850	104		7.6	79.0	34310	31.7
	30	76.1	58230	103		9.1	76.1	28410	31.4
35	73.2	47210	102	10.7	73.2	21410	31.1		

(Continued)

LIFT RATINGS (cont.)

with 59S Tubular Chord Hammerhead Boom

METRIC

Boom Length Feet	Radius In Feet	Boom Angle Degrees	Rating in Pounds	Feet From Boom Point To Ground	Boom Length Meters	Radius in Meters	Boom Angle Degrees	Rating in Kilograms	Meters From Boom Point To Ground
100 feet (cont.)	40	70.1	39400	100	30.5 meters (cont.)	12.2	70.1	17870	30.3
	50	63.9	29240	95		15.2	63.9	13260	29.3
	60	57.3	23060	90		18.3	57.3	10480	27.4
	70	50.2	18720	83		21.3	50.2	8400	25.3
	80	42.1	15580	73		24.4	42.1	7070	22.9
	90	32.5	13180	60		27.4	32.5	5590	18.5
	100	18.9	11310	38		30.5	18.9	5130	11.8
110 feet	20	82.7	106000	115	33.3 meters	6.1	82.7	48080	35.1
	25	80.0	75510	114		7.6	80.0	34250	34.7
	30	77.4	58060	113		9.1	77.4	25340	34.4
	35	74.7	47040	112		10.7	74.7	21340	34.1
	40	72.0	39220	111		12.2	72.0	17790	33.8
	50	66.4	29050	107		15.2	66.4	13180	32.6
	60	60.6	22880	102		18.3	60.6	10380	31.1
	70	54.4	18550	95		21.3	54.4	8410	29.0
	80	47.7	15390	87		24.4	47.7	6880	26.5
	90	40.1	13000	77		27.4	40.1	5800	23.5
	100	31.0	11130	62		30.5	31.0	5050	18.9
110	18.0	9620	40	33.3	18.0	4300	12.2		
120 feet	21	82.8	95520	125	36.8 meters	6.4	82.8	40000	28.1
	25	80.9	75360	125		7.6	80.9	34180	28.1
	30	78.5	57890	124		9.1	78.5	26260	27.8
	35	76.0	46880	123		10.7	76.0	21260	27.5
	40	73.5	39060	121		12.2	73.5	17720	26.9
	50	68.5	28880	118		15.2	68.5	13100	26.0
	60	63.3	22720	113		18.3	63.3	10310	24.4
	70	57.8	18380	107		21.3	57.8	8340	22.6
	80	51.9	15240	100		24.4	51.9	6910	20.5
	90	45.5	12840	91		27.4	45.5	5800	17.7
	100	38.3	10970	80		30.5	38.3	4980	14.4
	110	29.6	9450	65		33.3	29.6	4290	10.8
120	17.2	8220	41	36.8	17.2	3730	7.5		
130 feet	22	82.9	80970	135	39.8 meters	6.7	82.9	38700	41.1
	25	81.6	75200	135		7.6	81.6	34110	41.1
	30	79.4	57720	134		9.1	79.4	26180	40.8
	35	77.1	46710	133		10.7	77.1	21190	40.5
	40	74.8	38880	132		12.2	74.8	17640	40.2
	50	70.2	28680	128		15.2	70.2	13010	38.0
	60	65.5	22540	124		18.3	65.5	10220	37.8
	70	60.5	18200	119		21.3	60.5	8260	36.3
	80	55.3	15040	113		24.4	55.3	6800	34.4
	90	49.7	12650	105		27.4	49.7	5740	32.0
	100	43.6	10780	96		30.5	43.6	4890	29.3
	110	36.7	9260	83		33.3	36.7	4200	25.3
	120	28.4	8020	67		36.8	28.4	3640	20.4
130	16.5	6990	42	39.8	16.5	3170	12.8		
140 feet	24	82.6	68380	145	42.7 meters	7.3	82.6	31020	44.2
	25	82.2	68380	145		7.6	82.2	31020	44.2
	30	80.1	57550	144		9.1	80.1	26100	43.9
	35	78.0	46540	143		10.7	78.0	21110	43.6
	40	75.9	38700	142		12.2	75.9	17560	43.3
	50	71.7	28490	139		15.2	71.7	12820	42.4
	60	67.3	22360	135		18.3	67.3	10140	41.1
	70	62.8	18020	131		21.3	62.8	8170	39.9
	80	58.1	14870	125		24.4	58.1	6750	38.1
	90	53.1	12480	118		27.4	53.1	5680	36.0
	100	47.8	10590	110		30.5	47.8	4800	33.6
	110	41.9	9080	99		33.3	41.9	4120	30.9
	120	35.3	7830	87		36.8	35.3	3550	26.5
	130	27.3	6790	70		39.8	27.3	3080	21.3
140	15.9	5920	44	42.7	15.9	2690	13.4		
150 feet	25	82.7	58830	155	45.7 meters	7.6	82.7	26890	47.2
	30	80.8	57370	154		9.1	80.8	25020	46.9
	35	78.8	46370	153		10.7	78.8	21030	46.6
	40	76.9	38610	152		12.2	76.9	17470	46.3
	50	72.9	28290	149		15.2	72.9	12830	45.4
	60	68.9	22170	146		18.3	68.9	10060	44.5
	70	64.8	17830	142		21.3	64.8	8090	43.3
	80	60.4	14670	136		24.4	60.4	6660	41.5
	90	55.9	12270	130		27.4	55.9	5570	39.8
	100	51.2	10400	123		30.5	51.2	4720	37.5
	110	46.1	8870	114		33.3	46.1	4020	34.7
	120	40.4	7630	103		36.8	40.4	3460	31.4
	130	34.1	6590	90		39.8	34.1	2990	27.4
	140	26.3	5710	72		42.7	26.3	2590	21.8
	150	15.3	4960	45		45.7	15.3	2250	13.7

(Continued)

LIFT RATINGS (cont.)

with 59S Tubular Chord Hammerhead Boom

METRIC

Boom Length Feet	Radius In Feet	Boom Angle Degrees	Rating In Pounds	Feet From Boom Point To Ground
160 feet	26	82.8	49540	165
	30	81.4	49540	164
	35	79.6	46200	163
	40	77.7	38330	162
	50	74.0	28100	160
	60	70.3	22000	157
	70	66.4	17650	153
	80	62.5	14490	148
	90	58.3	12090	142
	100	54.0	10210	135
	110	49.4	8690	127
	120	44.5	7450	118
	130	39.1	6410	107
140	32.9	5520	93	
150	25.5	4770	74	
160	14.8	4120	46	
170 feet	27	82.9	43530	175
	30	81.9	43530	174
	35	80.2	43510	174
	40	78.5	38140	173
	50	75.0	27900	170
	60	71.5	21810	167
	70	67.9	17450	164
	80	64.2	14290	159
	90	60.4	11890	154
	100	56.4	10000	148
	110	52.3	8480	140
	120	47.9	7240	132
	130	43.1	6200	122
140	37.9	5310	110	
150	31.9	4560	96	
160	24.7	3900	77	
170	14.3	3340	48	
180 feet	28	83.0	38410	185
	30	82.3	38380	184
	35	80.7	38180	184
	40	79.1	37960	183
	50	75.9	27700	181
	60	72.5	21620	178
	70	69.2	17270	174
	80	65.7	14100	170
	90	62.2	11700	165
	100	58.5	9810	159
	110	54.7	8290	153
	120	50.7	7040	145
	130	46.4	5990	136
140	41.8	5110	126	
150	36.7	4350	113	
160	31.0	3690	98	
170	24.0	3120	79	
180	13.9	2520	49	

7260-97

Boom Length Meters	Radius In Meters	Boom Angle Degrees	Rating In Kilograms	Meters From Boom Point To Ground
46.8 meters	7.9	82.8	22520	50.3
	9.1	81.4	22520	50.0
	10.7	79.6	20960	49.7
	12.2	77.7	17290	49.4
	15.2	74.0	12750	48.8
	18.3	70.3	9990	47.9
	21.3	66.4	8010	46.6
	24.4	62.5	6570	45.1
	27.4	58.3	5480	43.3
	30.5	54.0	4630	41.1
	33.5	49.4	3940	38.7
	36.6	44.5	3390	36.0
	39.6	39.1	2910	32.6
42.7	32.9	2500	28.3	
45.7	25.5	2180	22.6	
48.8	14.8	1870	14.0	
51.8 meters	8.2	82.9	19750	53.3
	9.1	81.9	19750	53.0
	10.7	80.2	19740	53.0
	12.2	78.5	17300	52.7
	15.2	75.0	12850	51.8
	18.3	71.5	9890	50.9
	21.3	67.9	7920	50.0
	24.4	64.2	6480	48.5
	27.4	60.4	5390	46.6
	30.5	56.4	4540	45.1
	33.5	52.3	3850	42.7
	36.6	47.9	3290	40.2
	39.6	43.1	2810	37.2
42.7	37.9	2410	33.8	
45.7	31.9	2070	29.3	
48.8	24.7	1770	23.5	
51.8	14.3	1520	14.6	
54.9 meters	9.5	83.0	17420	56.4
	9.1	82.3	17410	56.1
	10.7	80.7	17320	56.1
	12.2	79.1	17220	56.2
	15.2	75.9	12550	55.2
	18.3	72.5	9810	54.3
	21.3	69.2	7830	53.0
	24.4	65.7	6490	51.8
	27.4	62.2	5310	50.3
	30.5	58.5	4490	48.5
	33.5	54.7	3780	46.6
	36.6	50.7	3190	44.2
	39.6	46.4	2720	41.5
42.7	41.8	2320	38.4	
45.7	36.7	1970	34.4	
48.8	31.0	1670	29.9	
51.8	24.0	1420	24.1	
54.9	13.9	1160	14.9	

LIFT RATINGS

with 59S Tubular Chord Tapered Tip Boom and "S-S" Counterweight (49,900 lbs.) (22635 kgs.)

METRIC

Boom Length Feet	Radius In Feet	Boom Angle Degrees	Rating In Pounds	Feet From Boom Point To Ground
60 feet	14	80.5	153340	65
	15	79.6	153340	64
	20	74.7	106870	63
	25	69.6	78530	62
	30	64.5	59270	59
	35	59.0	48260	57
	40	53.3	40520	53
	50	40.1	30460	44
60	21.4	24240	27	

Boom Length Meters	Radius In Meters	Boom Angle Degrees	Rating In Kilograms	Meters From Boom Point To Ground
18.3 meters	4.3	80.5	69590	19.8
	4.5	79.6	69590	19.5
	8.1	74.7	48490	19.2
	7.6	69.6	34710	18.9
	9.1	64.5	26890	18.0
	10.7	59.0	21890	17.4
	12.2	53.3	18280	16.3
	15.2	40.1	13820	13.4
18.3	21.4	11020	8.2	

(Continued)

LIFT RATINGS (cont.)

with 59S Tubular Chord Tapered Tip Boom

METRIC

Boom Length Feet	Radius In Feet	Boom Angle Degrees	Rating In Pounds	Feet From Boom Point To Ground	Boom Length Meters	Radius In Meters	Boom Angle Degrees	Rating In Kilograms	Meters From Boom Point To Ground
70 feet	16	80.2	153230	74	21.3 meters	4.9	80.2	69310	22.6
	20	76.9	106740	74		6.1	76.9	46420	22.6
	25	72.6	76390	72		7.6	72.6	34650	21.9
	30	68.3	59110	70		9.1	68.3	26610	21.2
	35	63.8	48110	68		10.7	63.8	21820	20.7
	40	59.2	40370	65		12.2	59.2	18310	19.6
	50	49.1	30290	58		15.2	49.1	13740	17.7
	60	37.0	24100	47		18.3	37.0	10920	14.3
	70	19.8	19800	29	21.3	19.8	6980	9.8	
80 feet	17	80.7	139550	84	24.4 meters	5.2	80.7	63300	25.8
	20	78.6	106600	84		6.1	78.6	48350	25.8
	25	74.9	76250	83		7.6	74.9	34190	25.3
	30	71.1	58960	81		9.1	71.1	26740	24.7
	35	67.3	47980	79		10.7	67.3	21760	24.1
	40	63.4	40230	77		12.2	63.4	18250	23.5
	50	55.0	30140	71		15.2	55.0	13670	21.8
	60	45.7	23960	63		18.3	45.7	10870	18.2
	70	34.6	19660	51	21.3	34.6	8020	15.3	
	80	18.5	16550	31	24.4	18.5	7610	9.4	
90 feet	19	80.5	115630	94	27.4 meters	5.6	80.5	50450	28.7
	20	79.8	106430	94		6.1	79.8	46290	28.7
	25	76.6	76080	93		7.6	76.6	34510	28.3
	30	73.3	56770	92		9.1	73.3	26600	28.0
	35	69.9	47800	90		10.7	69.9	21680	27.4
	40	66.5	40040	88		12.2	66.5	18160	26.8
	50	59.4	29950	83		15.2	59.4	13500	25.3
	60	51.6	23780	76		18.3	51.6	10790	23.2
	70	43.0	19480	67	21.3	43.0	8640	20.4	
	80	32.5	16360	54	24.4	32.5	7420	16.5	
	90	17.4	14000	32	27.4	17.4	6200	9.8	
100 feet	20	80.9	106250	104	30.5 meters	6.1	80.9	48200	31.7
	25	78.0	75930	103		7.6	78.0	34440	31.4
	30	75.0	58600	102		9.1	75.0	26580	31.1
	35	72.0	47640	100		10.7	72.0	21610	30.6
	40	69.0	39880	99		12.2	69.0	18290	30.2
	50	62.7	29770	94		15.2	62.7	13800	28.7
	60	56.0	23630	88		18.3	56.0	10720	26.8
		70	48.8	19320		81	21.3	48.8	8760
	80	40.6	16200	70	24.4	40.6	7350	21.3	
	90	30.8	13840	57	27.4	30.8	6280	17.4	
	100	16.5	11990	34	30.5	16.5	5440	10.4	
110 feet	22	80.6	91530	114	33.5 meters	6.7	80.6	41320	34.7
	25	79.1	75750	113		7.6	79.1	34260	34.4
	30	76.4	58410	112		9.1	76.4	26490	34.1
	35	73.7	47440	111		10.7	73.7	21520	33.6
	40	71.0	39680	109		12.2	71.0	18000	33.2
	50	65.4	29560	105		15.2	65.4	13410	32.0
	60	59.5	23440	100		18.3	59.5	10630	30.6
		70	53.2	19130		93	21.3	53.2	8680
	80	46.4	16010	85	24.4	46.4	7260	25.9	
	90	38.7	13640	74	27.4	38.7	6190	22.6	
	100	29.4	11770	59	30.5	29.4	5340	18.0	
	110	15.7	10290	35	33.5	15.7	4570	10.7	
120 feet	23	81.0	85350	124	36.6 meters	7.0	81.0	36710	31.8
	25	80.0	75580	124		7.6	80.0	34280	31.6
	30	77.5	58220	123		9.1	77.5	26410	31.5
	35	75.1	47260	121		10.7	75.1	21440	31.0
	40	72.6	39490	120		12.2	72.6	17910	30.6
	50	67.5	29370	116		15.2	67.5	13320	29.4
	60	62.2	23260	112		18.3	62.2	10560	28.1
		70	56.7	18950		106	21.3	56.7	8800
	80	50.8	15820	98	24.4	50.8	7180	23.3	
	90	44.3	13450	89	27.4	44.3	6100	21.1	
	100	37.0	11590	77	30.5	37.0	5050	18.5	
	110	28.1	10100	62	33.5	28.1	4360	15.9	
	120	15.1	8890	37	36.6	15.1	4020	11.3	
130 feet	25	80.8	74710	134	39.6 meters	7.8	80.8	32890	30.5
	30	78.5	58010	133		9.1	78.5	25310	30.2
	35	76.3	47080	132		10.7	76.3	21360	30.2
	40	74.0	39290	130		12.2	74.0	17820	29.8
	50	69.3	29150	127		15.2	69.3	13270	28.7
	60	64.5	23060	123		18.3	64.5	10460	27.5
	70	59.6	18750	117		21.3	59.6	8510	25.7
		80	54.3	15620		111	24.4	54.3	7290
	90	48.7	13240	103	27.4	48.7	6210	21.4	

(Continued)

LIFT RATINGS (cont.)

with 59S Tubular Chord Tapered Tip Boom

METRIC

Boom Length Feet	Radius In. Feet	Boom Angle Degrees	Rating In Pounds	Feet From Boom Point To Ground	Boom Length Meters	Radius In Meters	Boom Angle Degrees	Rating In Kilograms	Feet From Boom Point To Ground
130 feet (cont.)	100	42.5	11380	93	29.9 meters (cont.)	30.5	42.5	5100	28.3
	110	35.5	9880	81		33.5	35.5	4480	24.7
	120	27.0	8660	64		36.8	27.0	3930	19.5
	130	14.5	7640	38		39.8	14.5	3470	11.8
140 feet	27	80.8	64400	143	42.7 meters	8.2	80.8	29210	43.8
	30	79.3	57620	143		9.1	79.3	26230	43.6
	35	77.3	46890	142		10.2	77.3	21270	43.3
	40	75.2	39100	141		12.2	75.2	17740	43.0
	50	70.9	28960	138		15.2	70.9	13140	42.1
	60	66.5	22880	134		18.3	66.5	10380	40.8
	70	61.9	18570	129		21.3	61.9	8420	39.3
	80	57.2	15440	123		24.4	57.2	7000	37.5
	90	52.2	13060	116		27.4	52.2	5920	35.4
	100	45.8	11190	107		30.5	45.8	5060	32.8
	110	40.9	9690	97		33.5	40.9	4400	29.8
	120	34.1	8470	84		36.8	34.1	3840	25.8
130	26.0	7440	67	39.8	26.0	3370	20.4		
140	13.9	6590	39	42.7	13.9	2990	11.9		
150 feet	28	80.8	55770	153	45.7 meters	8.5	80.8	25300	46.8
	30	80.1	55770	153		9.1	80.1	25300	46.6
	35	78.1	48690	152		10.2	78.1	21150	46.3
	40	76.2	38890	151		12.2	76.2	17640	46.0
	50	72.2	29740	148		15.2	72.2	13040	45.1
	60	68.1	22680	145		18.3	68.1	10290	44.2
	70	63.9	18360	140		21.3	63.9	8330	42.7
	80	59.6	15220	135		24.4	59.6	7000	41.1
	90	55.1	12850	128		27.4	55.1	5930	38.0
	100	50.3	10980	121		30.5	50.3	4990	34.9
	110	45.1	9490	112		33.5	45.1	4300	31.1
	120	39.4	8250	101		36.8	39.4	3740	26.8
130	32.9	7220	87	39.8	32.9	3270	22.3		
140	25.1	6360	69	42.7	25.1	2890	17.0		
150	13.5	5630	40	45.7	13.5	2550	12.2		
160 feet	30	80.7	47450	163	48.9 meters	9.1	80.7	21920	49.7
	35	78.9	46500	162		10.2	78.9	21090	49.4
	40	77.0	38700	161		12.2	77.0	17560	49.1
	50	73.3	28540	159		15.2	73.3	12960	48.5
	60	69.6	22490	155		18.3	69.6	10200	47.2
	70	65.7	18160	151		21.3	65.7	8240	45.0
	80	61.7	15030	146		24.4	61.7	7000	44.5
	90	57.5	12650	140		27.4	57.5	5740	42.7
	100	53.2	10790	133		30.5	53.2	4890	40.5
	110	48.6	9280	125		33.5	48.6	4210	38.1
	120	43.6	8050	116		36.8	43.6	3640	35.4
	130	38.1	7020	104		39.8	38.1	3180	31.7
140	31.9	6150	90	42.7	31.9	2790	27.4		
150	24.3	5410	71	45.7	24.3	2450	21.8		
160	13.0	4780	41	48.8	13.0	2170	12.5		
170 feet	31	80.9	41890	173	51.8 meters	9.4	80.9	19000	52.7
	35	79.5	41820	173		10.2	79.5	18970	52.7
	40	77.8	36490	172		12.2	77.8	17480	52.4
	50	74.3	28320	169		15.2	74.3	12850	51.5
	60	70.8	22280	166		18.3	70.8	10110	50.6
	70	67.2	17950	162		21.3	67.2	8140	48.4
	80	63.5	14620	157		24.4	63.5	7000	47.9
	90	59.7	12440	152		27.4	59.7	5940	46.3
	100	55.7	10570	146		30.5	55.7	4790	44.5
	110	51.5	9070	138		33.5	51.5	4110	42.1
	120	47.0	7830	130		36.8	47.0	3550	39.8
	130	42.2	6800	120		39.8	42.2	3090	36.8
140	36.9	5920	107	42.7	36.9	2690	32.8		
150	30.9	5180	93	45.7	30.9	2360	28.3		
160	23.5	4540	73	48.8	23.5	2090	22.3		
170	12.6	3990	43	51.8	12.6	1810	13.1		
180 feet	33	80.8	37010	183	54.8 meters	10.1	80.8	16700	55.8
	35	80.1	36880	183		10.2	80.1	16730	55.8
	40	78.5	32730	182		12.2	78.5	14860	55.3
	50	75.2	22120	179		15.2	75.2	10330	54.6
	60	71.9	22090	176		18.3	71.9	10020	53.8
	70	68.5	17760	173		21.3	68.5	8560	52.7
	80	65.1	14620	169		24.4	65.1	7430	51.1
	90	61.5	12240	164		27.4	61.5	6550	50.0
	100	57.8	10370	158		30.5	57.8	5700	48.2
	110	54.0	8860	151		33.5	54.0	4920	45.0
	120	49.9	7630	143		36.8	49.9	4240	43.8
	130	45.6	6600	134		39.8	45.6	3630	40.8

(Continued)

LIFT RATINGS (cont.)

with 59S Tubular Chord Tapered Tip Boom

METRIC

Boom Length Feet	Radius In Feet	Boom Angle Degrees	Rating In Pounds	Feet From Boom Point To Ground	Boom Length Meters	Radius In Meters	Boom Angle Degrees	Rating In Kilograms	Meters From Boom Point To Ground
180 feet (cont.)	140	41.0	5730	123	34.8 meters (cont.)	42.7	41.0	2590	27.5
	150	35.9	4970	111		45.7	35.9	2250	25.8
	160	30.0	4330	95		48.8	30.0	1950	20.0
	170	22.8	3760	75		51.8	22.8	1710	22.9
	180	12.3	3290	44		54.8	12.3	1490	13.4
190 feet	35	81.0	32880	193	57.9 meters	10.4	81.0	14910	58.8
	40	80.8	32820	193		10.7	80.8	14890	58.8
	40	79.1	32490	192		13.2	79.1	14740	58.5
	50	76.0	27900	190		15.2	76.0	12980	57.5
	60	72.9	21890	187		18.3	72.9	9930	57.0
	70	69.7	17550	184		21.3	69.7	7950	56.7
	80	66.5	14410	180		24.4	66.5	6540	54.0
	90	63.1	12030	175		27.4	63.1	5480	53.3
	100	59.7	10160	169		30.5	59.7	4610	51.5
	110	56.1	8650	163		33.5	56.1	3920	49.7
	120	52.4	7420	156		36.6	52.4	3370	47.6
	130	48.5	6380	148		39.6	48.5	2890	45.7
	140	44.3	5500	138		42.7	44.3	2490	42.1
	150	39.8	4750	127		45.7	39.8	2150	38.7
	160	34.9	4100	114		48.8	34.9	1880	34.7
170	29.2	3530	98	51.8	29.2	1600	29.9		
180	22.2	3050	77	54.8	22.2	1380	23.8		
190	12.0	2580	45	57.8	12.0	1190	13.7		
200 feet	36	80.8	28310	203	51.0 meters	11.0	80.8	13000	61.9
	40	79.7	28990	202		13.2	79.7	12180	61.6
	50	76.7	27680	200		15.2	76.7	12560	61.0
	60	73.8	21690	197		18.3	73.8	9840	60.0
	70	70.8	17350	194		21.3	70.8	7870	58.1
	80	67.7	14210	190		24.4	67.7	6450	57.5
	90	64.6	11820	186		27.4	64.6	5360	56.7
	100	61.4	9950	181		30.5	61.4	4510	55.2
	110	58.0	8440	175		33.5	58.0	3830	53.3
	120	54.6	7200	168		36.6	54.6	3270	51.2
	130	51.0	6170	161		39.6	51.0	2800	49.1
	140	47.2	5290	152		42.7	47.2	2400	46.3
	150	43.2	4540	142		45.7	43.2	2060	43.3
	160	38.8	3880	131		48.8	38.8	1760	39.9
	170	34.0	3320	117		51.8	34.0	1510	35.7
180	28.4	2800	101	54.8	28.4	1270	30.8		
190	21.7	2280	79	57.8	21.7	1030	24.1		
200	11.7	1820	46	61.0	11.7	830	14.0		

7260.96

DUTY CYCLE RATINGS with 59S Tubular Chord Tapered Boom and "L-L" Counterweight (25,000 lbs.) (11340 kgs.)

METRIC

Boom Length (Feet)	Radius In Feet	Boom Angle Degrees	Duty Cycle Ratings			Feet From Boom Point To Ground	Boom Length (Meters)	Radius In Meters	Boom Angle Degrees	Duty Cycle Ratings			Meters From Boom Point To Ground
			Clamshell	Dragline	Magnet					Clamshell	Dragline	Magnet	
60 feet	14	80.5	20700	17750	20700	65	18.3 meters	4.3	80.5	9390	8050	9390	19.5
	15	79.6	20700	17750	20700	64		4.8	79.6	9390	8050	9390	19.5
	20	74.7	20700	17750	20700	63		5.1	74.7	9390	8050	9390	19.2
	25	69.6	20700	17750	20700	62		7.6	69.6	9390	8050	9390	18.9
	30	64.5	20700	17750	20700	59		9.1	64.5	9390	8050	9390	18.0
	35	59.0	20700	17750	20700	57		10.7	59.0	9390	8050	9390	17.4
	40	53.3	20700	17750	20700	53		12.3	53.3	9390	8050	9390	16.3
	50	40.1	19620	17750	19620	44		15.2	40.1	9390	8050	9390	13.4
60	21.4	15440	17340	15440	27	18.3	21.4	7090	7870	7090	8.2		
70 feet	16	80.2	20700	17750	20700	74	21.3 meters	4.5	80.2	9390	8050	9390	22.5
	20	76.9	20700	17750	20700	74		5.7	76.9	9390	8050	9390	22.5
	25	72.6	20700	17750	20700	72		7.6	72.6	9390	8050	9390	21.9
	30	68.3	20700	17750	20700	70		9.1	68.3	9390	8050	9390	21.3
	35	63.8	20700	17750	20700	68		10.7	63.8	9390	8050	9390	20.7
	40	59.2	20700	17750	20700	65		12.3	59.2	9390	8050	9390	19.8
	50	49.1	19530	17750	19530	58		15.2	49.1	9390	8050	9390	17.2
	60	37.0	15360	17250	15360	47		18.3	37.0	8070	7870	8070	14.3
	70	19.8	12500	14030	12500	29		21.3	19.8	5670	6380	5670	8.8

(Continued)

DUTY CYCLE RATINGS (cont.)

with 59S Tubular Chord Tapered Tip Boom

METRIC

Boom Length (Feet)	Radius In Feet	Boom Angle Degrees	Duty Cycle Ratings			Feet From Boom Point To Ground
			Clamshell	Dragline	Magnet	
80 feet	17	80.7	20700	17750	20700	84
	20	78.6	20700	17750	20700	84
	25	74.9	20700	17750	20700	83
	30	71.1	20700	17750	20700	81
	35	67.3	20700	17750	20700	79
	40	63.4	20700	17750	20700	77
	50	55.0	19420	17750	19420	71
	60	45.7	15250	17130	15250	63
70	34.6	12390	13920	12390	51	
80	18.5	10300	11570	10300	31	
90 feet	19	80.5	20700	—	—	94
	20	79.8	20700	—	—	94
	25	76.6	20700	—	—	93
	30	73.3	20700	—	—	92
	35	69.9	20700	—	—	90
	40	66.5	20700	—	—	88
	50	59.4	19300	—	—	83
	60	51.6	15130	—	—	75
	70	43.0	12270	—	—	67
80	32.5	10190	—	—	54	
90	17.4	8590	—	—	32	
100 feet	20	80.9	20700	—	—	104
	25	78.0	20700	—	—	103
	30	75.0	20700	—	—	102
	35	72.0	20700	—	—	100
	40	69.0	20700	—	—	99
	50	62.7	19190	—	—	94
	60	56.0	15010	—	—	88
	70	48.8	12180	—	—	81
	80	40.6	10080	—	—	70
	90	30.8	8490	—	—	57
100	16.5	7240	—	—	34	
110 feet	22	80.6	20700	—	—	114
	25	79.1	20700	—	—	113
	30	76.4	20700	—	—	112
	35	73.7	20700	—	—	111
	40	71.0	20700	—	—	109
	50	65.4	19050	—	—	105
	60	59.5	14880	—	—	100
	70	53.2	12020	—	—	93
	80	46.4	9940	—	—	85
	90	38.7	8360	—	—	74
	100	29.4	7110	—	—	59
110	15.7	6090	—	—	35	
120 feet	23	81.0	20700	—	—	124
	25	80.0	20700	—	—	124
	30	77.5	20700	—	—	123
	35	75.1	20700	—	—	121
	40	72.6	20700	—	—	120
	50	67.5	18910	—	—	116
	60	62.2	14730	—	—	112
	70	56.7	11870	—	—	106
	80	50.8	9800	—	—	98
	90	44.3	8210	—	—	89
	100	37.0	6970	—	—	77
	110	28.1	5950	—	—	62
120	15.1	5110	—	—	37	

Boom Length (Meters)	Radius In Meters	Boom Angle Degrees	Duty Cycle Ratings			Meters From Boom Point To Ground
			Clamshell	Dragline	Magnet	
24.4 meters	5.2	80.7	9300	8050	9300	25.6
	6.1	78.6	9300	8050	9300	25.6
	7.6	74.9	9300	8050	9300	25.3
	8.1	71.1	9300	8050	9300	24.7
	10.7	67.3	9300	8050	9300	24.1
	12.2	63.4	9300	8050	9300	23.5
	15.2	55.0	8810	8050	8810	21.6
	18.3	45.7	6920	7770	6920	19.2
	21.3	34.6	5820	6910	5820	15.1
	24.4	18.5	4670	6100	4670	9.4
27.4 meters	5.9	80.5	9300	—	—	28.7
	6.1	79.8	9300	—	—	28.7
	7.6	76.6	9300	—	—	28.3
	8.1	73.3	9300	—	—	28.0
	10.7	69.9	9300	—	—	27.4
	12.2	66.5	9300	—	—	26.8
	15.2	59.4	8750	—	—	25.1
	18.3	51.6	6860	—	—	22.2
	21.3	43.0	5570	—	—	20.4
24.4	32.5	4820	—	—	16.5	
27.4	17.4	3900	—	—	9.8	
30.5 meters	6.1	80.9	9300	—	—	31.7
	7.6	78.0	9300	—	—	31.4
	9.1	75.0	9300	—	—	31.1
	10.7	72.0	9300	—	—	30.5
	12.2	69.0	9300	—	—	30.2
	15.2	62.7	8700	—	—	28.7
	18.3	56.0	6910	—	—	26.8
	21.3	48.8	5520	—	—	24.7
	24.4	40.6	4570	—	—	21.3
	27.4	30.8	3850	—	—	17.4
30.5	16.5	3280	—	—	10.4	
33.5 meters	6.7	80.6	9300	—	—	34.7
	7.3	79.1	9300	—	—	34.4
	9.1	76.4	9300	—	—	34.1
	10.7	73.7	9300	—	—	33.8
	12.2	71.0	9300	—	—	33.2
	15.2	65.4	8640	—	—	32.0
	18.3	59.5	6750	—	—	30.1
	21.3	53.2	5460	—	—	26.9
	24.4	46.4	4510	—	—	23.9
	27.4	38.7	3790	—	—	22.8
	30.5	29.4	3230	—	—	18.0
33.5	15.7	2780	—	—	10.7	
36.6 meters	7.0	81.0	9300	—	—	37.8
	7.8	80.0	9300	—	—	37.8
	10.7	77.5	9300	—	—	37.5
	12.7	75.1	9300	—	—	36.9
	15.2	72.6	9300	—	—	36.6
	18.3	67.5	8580	—	—	35.4
	21.3	62.2	6690	—	—	34.1
	24.4	56.7	5380	—	—	32.3
	27.4	50.8	4450	—	—	29.9
	27.4	44.3	3720	—	—	27.1
	30.5	37.0	3160	—	—	23.5
	33.5	28.1	2700	—	—	18.8
36.6	15.1	2300	—	—	11.3	

7260.61

NOTE:

Maximum dragline ratings are increased to 19,500 pounds (8845 kilograms) and maximum clamshell and magnet ratings are increased to 22,750 pounds (10319 kilograms) with optional GM 84-71N on Cummins NT-855-C250 diesel engine with three stage torque converter.

CRANE RATING DATA

Load ratings are in pounds (kilograms) and do not exceed 75% of the load which would cause tipping with crane standing level on firm uniformly supporting surface. Safe loads depend on ground conditions, boom length, radius of operation, and proper handling, all of which must be taken into consideration by user.

Lifting is approved only in those areas for which ratings are shown in the rating chart.

"Radius in feet (meters)" is the horizontal distance at crane base level from center pin to vertical line through the center of gravity of the suspended load. Blocks, slings, buckets, and other load carrying devices are considered part of the load. Retractable A-frame must be in fully raised position for all ratings.

Ratings in shaded areas are based on structural limitations rather than stability.

Main load line is 1" (25.4 mm) dia. IPS with a minimum breaking strength of 89,800 pounds (40733 kilograms). Boom suspension rope is 10 parts .75" (19 mm) dia. EIPS with a minimum breaking strength of 58,800 pounds (26672 kilograms). Boom suspension pendants are 2 parts of 1.375" (34.9 mm) dia. with a minimum breaking strength of 208,000 pounds (94348 kilograms).

Designed and rated to comply with ANSI Code B30.5.

LOAD HOISTING DATA

METRIC

Maximum Lifting Capacity	Minimum Parts of Load Line	Maximum Hoisting Distance		
		RH Drum With Controlled Load Lowering	LH Drum With Controlled Load Lowering	LH Drum Without Controlled Load Lowering
		ft.	ft.	ft.
200000	8	72	45	55
179800	7	83	52	63
153940	6	96	60	73
128280	5	116	72	88
102630	4	145	91	110
76970	3	193	121	147
51310	2	280	182	221
25660	1	581	364	442

Based on 1 in. IPS load line with 89,800 lb. minimum breaking strength.

Maximum Lifting Capacity	Minimum Parts of Load Line	Maximum Hoisting Distance		
		RH Drum With Controlled Load Lowering	LH Drum With Controlled Load Lowering	LH Drum Without Controlled Load Lowering
		m	m	m
90720	8	21.9	13.7	16.8
81470	7	25.3	15.8	19.2
69830	6	29.3	18.3	22.3
58190	5	35.4	21.9	26.8
46550	4	44.2	27.7	33.5
34910	3	58.8	36.9	44.8
23270	2	88.4	55.5	67.8
11640	1	177.1	110.9	134.7

Based on 25.4 mm dia. load line with 40733 kg. minimum breaking strength.

BOOM AND JIB ERECTION

METRIC

Boom Length	Max. JIB Length
180' (54.9 m) Hammerhead	70'
200' (61.0 m) Tapered Tip	80'

Boom Length	Max. JIB Length
180' (54.9 m) Hammerhead	21.3 m
200' (61.0 m) Tapered Tip	24.4 m

Boom & jib erection is over the end of the machine with idler tumbler blocked and with "S-S" counterweight.

59S HAMMERHEAD BOOM COMPOSITION

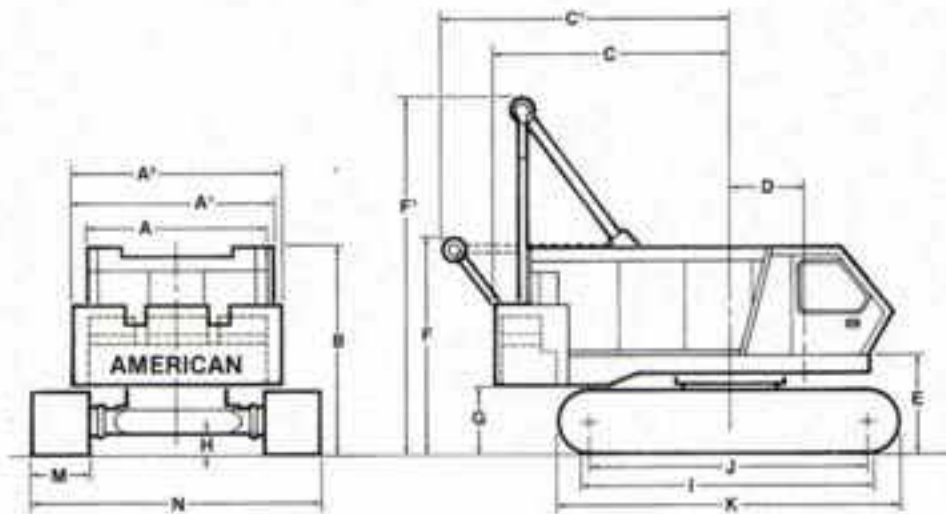
Boom Length		20 Ft. (6.1 m) 59H Inner	10 Ft. (3.1 m) 59S Center	20 Ft. (6.1 m) 59S Center	40 Ft. (12.2 m) 59SH Outer Base	20 Ft. (6.1 m) 59SH Outer Base	Hammerhead
ft.	m						
40	12.2	1	—	—	—	1	1
50	15.3	1	1	—	—	1	1
60	18.3	1	—	1	—	1	1
70	21.3	1	1	1	—	1	1
80	24.4	1	—	—	1	1	1
90	27.4	1	1	—	1	1	1
100	30.5	1	—	1	1	1	1
110	33.5	1	1	1	1	1	1
120	36.6	1	—	—	2	1	1
130	39.6	1	1	—	2	1	1
140	42.7	1	—	1	2	1	1
150	45.7	1	1	1	2	1	1
160	48.8	1	—	—	3	1	1
170	51.8	1	1	—	3	1	1
180	54.9	1	—	1	3	1	1

59S TAPERED TIP BOOM COMPOSITION

Boom Length		20 Ft. (6.1 m) 59H Inner	10 Ft. (3.1 m) 59S Center	20 Ft. (6.1 m) 59S Center	40 Ft. (12.2 m) 59SH Outer Base	20 Ft. (6.1 m) 59SH Outer Base	20 Ft. (6.1 m) 59SH Tapered Tip
ft.	m						
60	18.3	1	—	—	—	1	1
70	21.3	1	1	—	—	1	1
80	24.4	1	—	1	—	1	1
90	27.4	1	1	1	—	1	1
100	30.5	1	—	—	1	1	1
110	33.5	1	1	—	1	1	1
120	36.6	1	—	1	1	1	1
130	39.6	1	1	1	1	1	1
140	42.7	1	—	—	2	1	1
150	45.7	1	1	—	2	1	1
160	48.8	1	—	1	2	1	1
170	51.8	1	1	1	2	1	1
180	54.9	1	—	—	3	1	1
190	57.9	1	1	—	3	1	1
200	61.0	1	—	1	3	1	1

J.S.A.

AMERICAN MODEL 7260 CRAWLER



GENERAL DIMENSIONS

	Fl.	MM		Fl.	MM
A Width of cab	10'6"	3200	I Crawler bearing length	172 1/2"	5345
A' Width over counterweight	11'11 1/2"	3645	J Center to center crawler tumbler	16'4"	4978
A'' Width of machinery cab plus operator cab	10'11"	3327	K Overall length to crawlers	19'6 1/2"	5958
B Height over cab	11'9"	3581	M Width of tread shoes (Standard)	38"	991
C Tailswing	14'9"	4495	M' Width of tread shoes (Optional)	44" or 50"	1117 or 1270
C' Tailswing with A-frame retracted	16'9 1/2"	5118			
D Center of pivot to center of crane boom foot	4'1 1/2"	1257	N Overall width over crawlers		
E Ground to center of crane boom foot	5'8"	1676	38" (965 mm) Shoes	16'8"	5080
F Height over A-frame in retracted position	12'2"	3708	44" (1,118 mm) Shoes	17'2"	5232
F' Height over A-frame in raised position	20'7"	6274	50" (1,270 mm) Shoes	17'8"	5385
G Ground to bottom of counterweight	3'11"	1194	N' Width with side frames removed (over crawler axles)	11'0"	3353
H Minimum ground clearance under crawler base	14"	4257	O Overall length of cab and counterweight	19'8"	5994

PERFORMANCE

TRAVEL SPEED	0.9 MPH	1.43 KPH
SWING SPEED	3 RPM	3 RPM
SINGLE LINE SPEED:		
Crane Hoist	165 FPM	50.3 MPM
Dragline	157 FPM	47.9 MPM
Magnet	200 FPM	61.0 MPM
Third Drum (Standard Travel)	185 FPM	56.4 MPM
Third Drum (Independent Travel)	115 FPM	35.0 MPM
SINGLE LINE PULL:		
Crane Hoist	29,500 lbs. SLP	13301 kg
Dragline	31,400 lbs. SLP	14240 kg
Magnet	24,400 lbs. SLP	11068 kg
Third Drum (Std. Travel)	10,000 lbs. SLP	4536 kg
Third Drum (Ind. Travel)	16,000 lbs. SLP	7258 kg

NOTE: In accordance with varying material situations and the Company's policy of constant product improvement these specifications are subject to change without notice and without incurring responsibility to units previously sold.

WEIGHTS

7260 lifting crane with "S-S" counterweight and 40 ft. (12.19 m) boom with hammerhead:

	38" (965 mm) shoes	44" (1117 mm) shoes	50" (1270 mm) shoes
	167,900 #	170,050 #	172,650 #
	76,159 kg	77,135 kg	78,314 kg
			LBS. KG.
Counterweight	49,900	22635	
Hammerhead tip	2,150	975	
Crane boom outer	1,060	481	
Crane boom inner	2,230	1011	
Boom stops	350	180	
Outer bail assy.	965	440	
Crawler side frames (38" 965 mm shoes)	46,740	21200	
Drive couplings	840	380	
Crawler axles	7,900	3580	
Carbody assy.	11,120	5040	

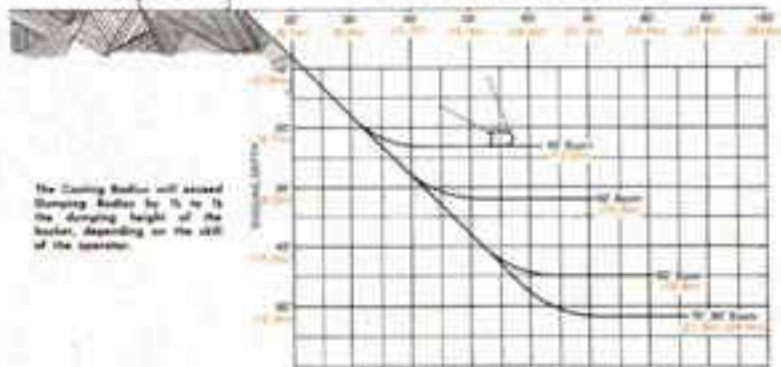
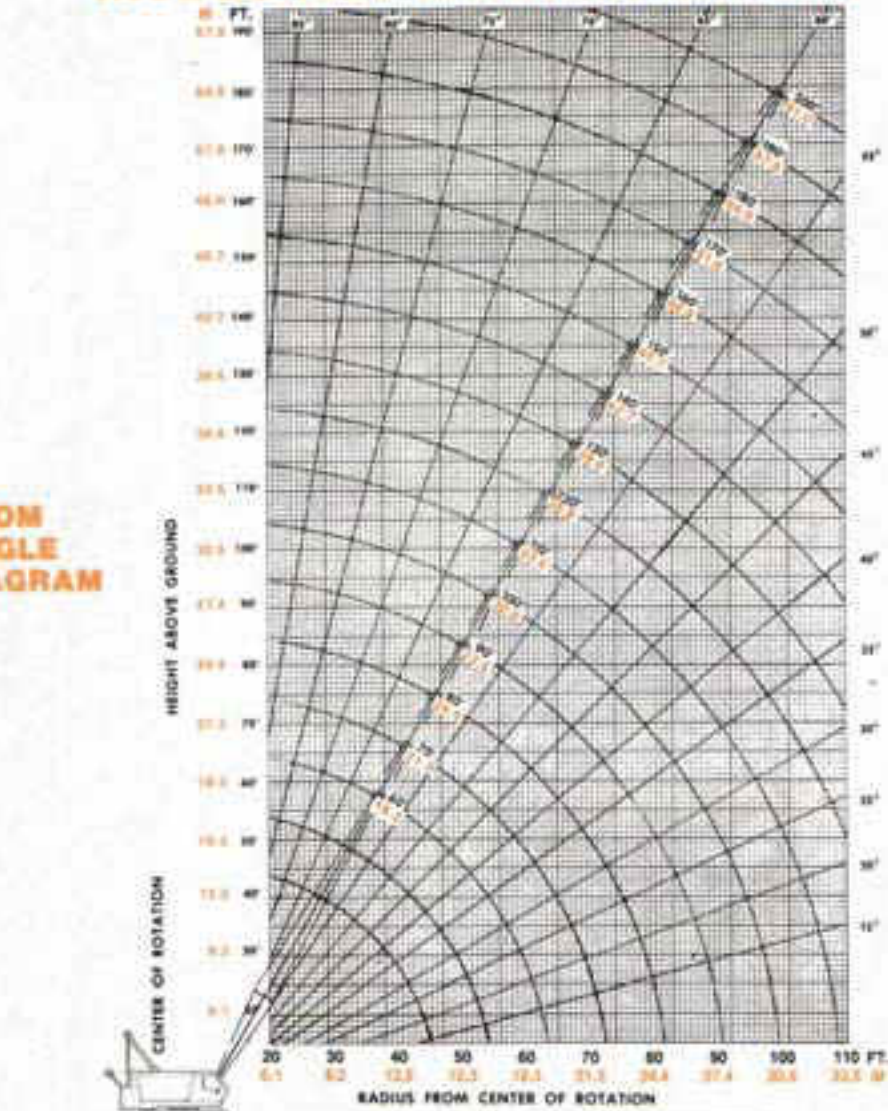
GROUND PRESSURES

Lifting crane with 40 ft. (12.19 m) boom with hammerhead and "S-S" counterweight.

	38" (965 mm) shoes	44" (1117 mm) shoes	50" (1270 mm) shoes
	10.7 PSI	9.4 PSI	8.4 PSI

MODEL 7260 WORKING RANGES

BOOM ANGLE DIAGRAM



DRAGLINE DIGGING DEPTH

3JR891

7260-CR-6

PRINTED IN U.S.A.

SOLD & SERVICED BY



The American Crane Corporation
 202 Raleigh Street
 Wilmington, North Carolina 28403
 AN EQUAL OPPORTUNITY EMPLOYER