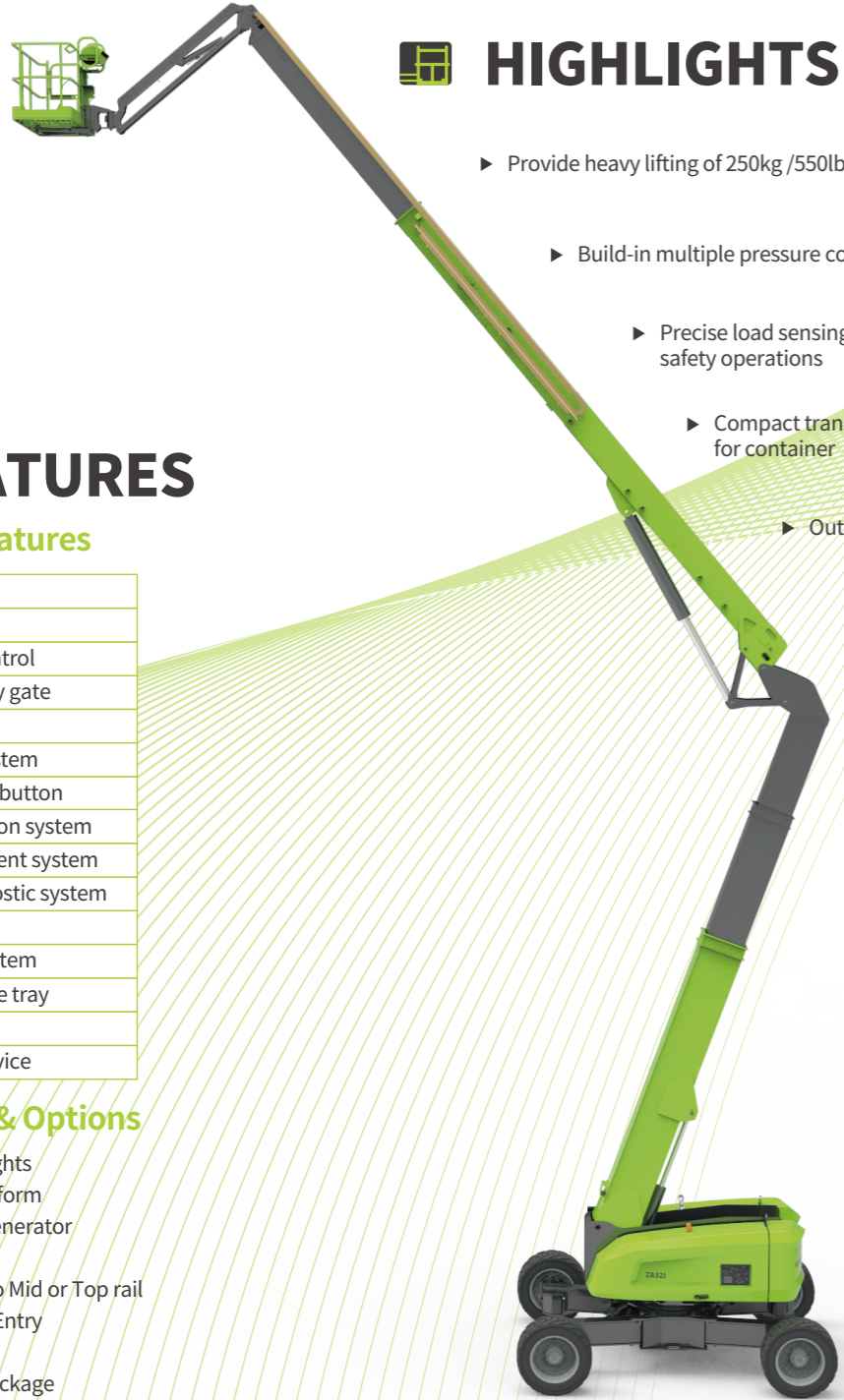


ZOOMLION

ARTICULATING BOOM LIFT

ZA32J

Comply with CE Standard



HIGHLIGHTS

- ▶ Provide heavy lifting of 250kg /550lb load for 28% higher efficiency
- ▶ Build-in multiple pressure control leveling system to enhance stability
- ▶ Precise load sensing system to improve overload safety operations
- ▶ Compact transportation size makes it available for container
- ▶ Outstanding below ground reach of 16ft 9in

FEATURES

Standard Features

Horn
All motion alarm
Proportional control
Self-closing entry gate
Flashing beacon
Auto-leveling system
Emergency stop button
Over tilt protection system
Emergency descent system
On-board diagnostic system
4.3' LED display
Load sensing system
Swing-out engine tray
4WS
Anti crushing device

Accessories & Options

- ▶ Platform work lights
- ▶ AC power to platform
- ▶ 8kw Hydraulic generator
- ▶ GPS
- ▶ Platform mesh to Mid or Top rail
- ▶ Fall Arrest, Rear Entry
- ▶ Storage Tray
- ▶ Welder Ready Package
- ▶ White Noise Alarm

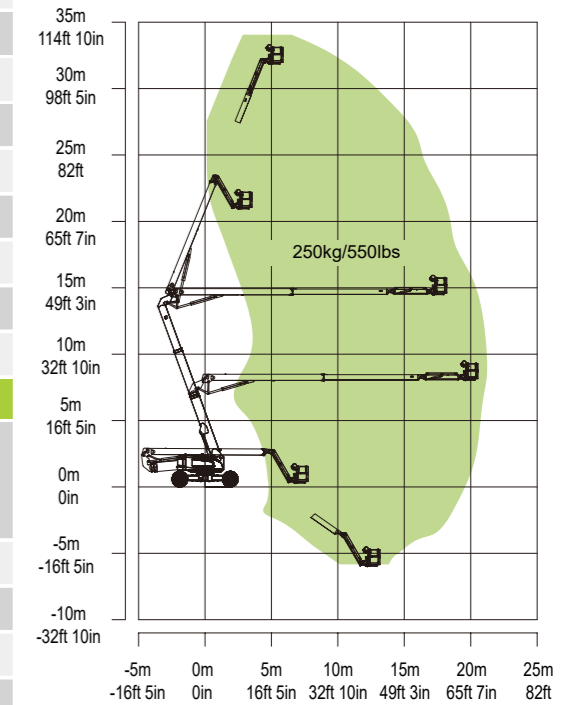
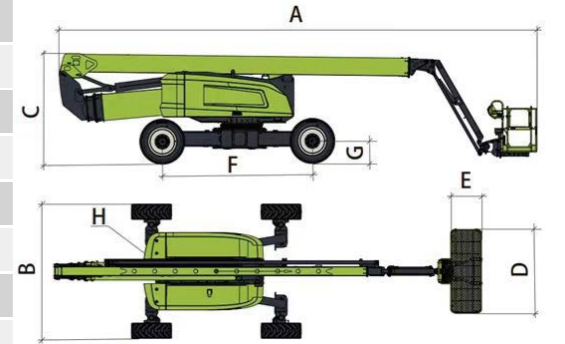
ACCESS WITH ZOOMLION GREEN

Phone: 0086(731)-88353692
E-mail: awp@zoomlion.com

Add: 701.Xulong Nan Lu, Xiangjiang New District, Changsha Hunan, China
Web: www.zoomlion-access.com

ZOOMLION

Model	ZA32J	
	Imperial	Metric
Size		
Work Height	111ft 8in	34.04m
Platform Height	105ft 6in	32.04m
Horizontal Outreach	69ft 5in	21.15m
Up and Over Height	47ft 6in	14.47m
A-Stowed Length	41ft 10in	12.75m
B-Stowed Width	8ft 2in	2.49m
C-Stowed Height	9ft 6in	2.89m
D-Platform Length	8ft	2.44m
E-Platform Width	2ft 12in	0.91m
F-Wheelbase	12ft 6in	3.81m
G-Ground Clearance	1ft 5in	0.42m
Performance		
Platform Capacity	550 lb	250kg
Drive Speed	3.23 mph	5.2km/h
Gradeability	45%	45%
Turning Radius (Inside)	15ft 9in/6ft 10in	4.79m/2.09m
Turning Radius (Outside)	26ft 8in/18ft 10in	8.13m/5.6m
Swing	360° continuous	
Platform Rotation	±90°	
H-Tail Swing	7in	0.19m
Max. Working Slope	5°	
Max. Wind Speed	28mph	12.5m/s
Power		
Diesel Engine	Kubota V2607-CR-TI-EW02 Kubota V3307-DI-T-MAR1-ET02	
Fuel Tank Capacity	36.9 (us gal)	150L
Auxiliary Power	12V	
Control Voltage	12V	
Hydraulic System Capacity	79.25 (us gal)	300L
Hydraulic Tank Capacity	52.8 (us gal)	200L
Tire		
Type	IN445/50D710 Foam-filled Tires	
Weight		
Gross	43651 lb	19800kg



Range of Motion ZA32J

ZOOMLION ACCESS reserves the right to make specification and/or equipment changes without prior notification. Product specifications are updated to May, 2025.