

液压式履带起重机

HYDRAULIC CRAWLER CRANE

QUY120

履带起重机有限公司

省抚顺市顺城区双阳路2号

126

v.cnfuwa.com

话: +86-413-7647 989/7642 419

-413-7642 419

心电话: +86-413-7641 727

sale@cnfuwa.com

电话: +86-413-7649 117/7642 558

-413-7642 766

export@cnfuwa.com

话: 800-890-0009

EXCAVATOR CORPORATION LTD.

Shuangyang Road, Shuncheng District, Fushun Liaoning, China

.cnfuwa.com

et Sale Dept. Tel: +86-413-7647 989/7642 419

413-7642 419

ervice Dept. Tel: +86-413-7641 727

e@cnfuwa.com

port Dept. Tel: +86-413-7649 117/7642 558

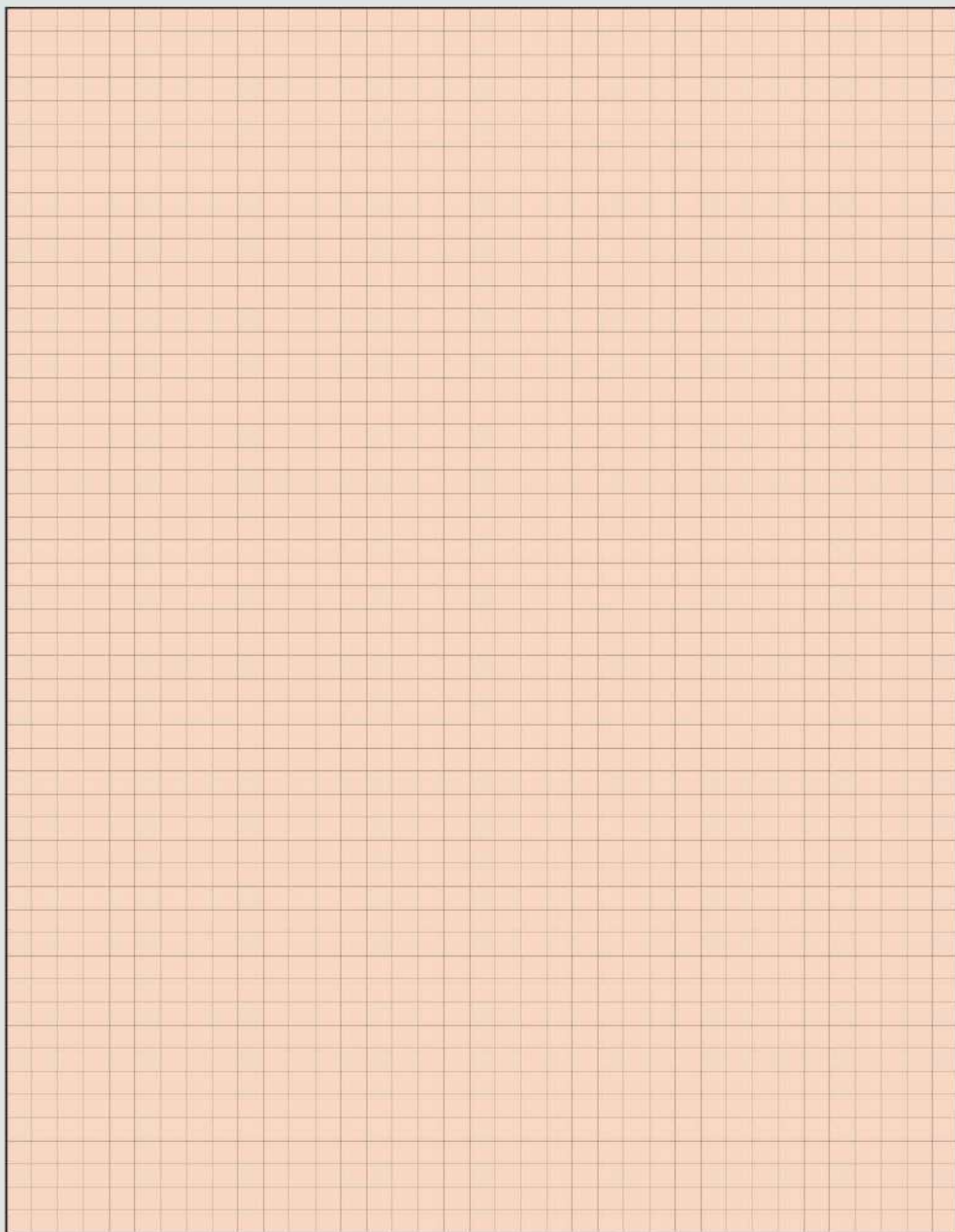
413-7642 766

ort@cnfuwa.com

更改恕不另行通知

may vary without prior notice





目录 Content

安全装置	Safety Devices	01-02 >>
详细说明	Specifications	03-04 >>
臂杆组合 主要技术参数	Boom Combination Technical Data	05-06 >>
总体尺寸 主臂和副臂组合	Overall Dimensions Boom and Jib Combination	07-08 >>
主臂和副臂组合 标准主臂工况载荷表 标准主臂工况作业范围	Boom and Jib Combination Load Chart (Standard Boom) Working Range (Standard Boom)	09-10 >>
加长主臂工况载荷表 加长主臂工况作业范围 轻型组合臂工况载荷表 轻型组合臂工况作业范围	Load Chart (Runner) Working Range (Runner) Load Chart (Light Duty Boom) Working Range (Light Duty Boom)	11-12 >>
固定副臂工况载荷表 固定副臂工况作业范围	Load Chart (Fixed Jib) Working Range (Fixed Jib)	13-14 >>
塔式工况载荷表 载荷表说明 塔式工况作业范围	Load Chart (Luffing Jib) Notes for Load Chart Working Range (Luffing Jib)	15-22 >>
主要零部件运输尺寸	Dimensions For Transportation	23-26 >>





安全装置

吊钩和臂架防过卷装置

吊钩和臂架防过卷装置是用于防止因过卷导致的机器损坏或后翻事故。

吊钩防过卷装置

当起重钩提升到一定高度时,将重锤托起,则微动开关由弹簧复位,开关触点断开,控制继电器动作使蜂鸣器报警,报警指示灯闪亮,同时,控制器锁定起重钩的提升,起重钩提升动作自动停止。

臂架防过卷装置

臂上限角度由力矩限制器和主臂上限位开关检测控制。

a.起重工况时

当主臂 \geq 上限位角度 80° 时,力矩限制器声光连续报警,并输出信号,主臂停止升臂。同时,主臂上限位开关动作,主臂上限位开关回路被切断,主臂停止升臂。

b.塔式工况时

当塔臂 \geq 上限位角度 78° 时,力矩限制器声光连续报警,并输出信号,塔臂停止升臂。同时,塔臂上限位开关回路被切断。

当塔臂 \leq 下限位角度 15° 时,力矩限制器声光连续报警,并输出信号,塔臂停止下降。同时,塔臂下限位开关动作,塔臂下限位开关回路被切断。

力矩限制器

限制器对起重机作业进行实时监控,当车运输或者工作的时候由限制器来测试各种参数再由显示器反映给驾驶员,在各种工况下,通过按键设置工况参数。

当额定起重力矩的 $0\% \leq$ 起重力矩 $<$ 额定起重力矩的 90% 时,力矩限制器显示屏上,力矩百分比条形码绿色点亮,限制器无声音报警。

当额定起重力矩的 $90\% \leq$ 起重力矩 $<$ 额定起重力矩的 100% 时,力矩限制器显示屏上,力矩百分比条形码黄色预警,同时限制器发出声音断续报警。

当额定起重力矩的 $100\% \leq$ 起重力矩 $<$ 额定起重力矩的 105% 时,力矩限制器显示屏上,力矩百分比条形码红色报警,同时限制器发出声音连续报警。

当起重力矩 \geq 额定起重力矩的 105% 时,力矩限制器显示屏上,力矩百分比条形码红色报警,限制器发出声音连续报警,同时输出信号,主、副钩停止提升,臂停止增幅动作。

负载率指示灯

为便于现场人员了解机械载荷情况,采用了与交通信号相同的3色负载率指示灯,同时配备了司机与吊装指挥人员联系用的对讲机。

风速仪

臂架顶部的风速传感器装置用于检测风速,力矩限制器显示风速,通过对风速的测试来给驾驶员一个参考,进而能确定车的工作环境。

卷筒、回转制动器及其锁定装置

制动器 本起重机设有主、副卷筒制动器、主、副变幅卷筒制动器、回转制动器。
锁定装置 本起重机设有主、副卷筒棘爪锁定装置、主变幅卷筒棘爪锁定装置、回转锁定装置。

拉力传感器、角度传感器

拉板上设有拉力传感器,用于检测拉力。
主臂根部装有角度传感器,用于检测主臂的角度。

水平仪

该装置用于检测机体与水平地面的角度,用来保证机器工作地面符合要求。

角度盘

主臂架根处设有机械式角度盘,在吊运和提升的时候用来显示臂架当前角度,给驾驶员一个详细的参考。

防倾杆限位保护

基础臂节设有防倾杆,而这个装置的作用就是在提升和吊运的情况下,如果重物的质量很大而且在不定风速的情况下,很有可能使主臂往后过倾。这个装置避免了此类情况的发生。

回转报警

回转机构设有蜂鸣器,当接近极限位置的时候,这个装置会发出声音断续报警。

Safety Device

Hook and boom over-choist prevention devices

Hook and boom over-choist prevention devices are used for preventing the crane from the accidents because of the over-choist.

Hook over-choist prevention device

When the hook lifts up to certain height and touches the plumb, the limit switch shall be disengaged by the reposition spring, and then the switch cuts off the control circuit. The control relay makes the buzzer alarm and the indicator lights up. At the same time, the rise of the hook will stop automatically.

Boom over-choist prevention device

The boom upper limit angle is controlled by moment limiter and boom upper limit switch.

a. Working condition with boom

When the boom upper limit angle is more than 80° , the moment limiter will continuously alarm and send out the signal. The rise of boom will stop. At the same time, the limit switch is cut off. The boom stops rising.

b. Working condition with luffing jib

When luffing jib upper limit angle is more than 78° , the moment limiter will continuously alarm and send out the signal of danger. The rise of luffing jib will stop. Meanwhile, the upper limit switch is cut off.

When luffing jib lower limit angle is less than 15° , the moment limiter will alarm continuously and send out the signal of danger. The lowering of the luffing jib stops. Meanwhile, the lower limit switch on the luffing jib is cut off.

Moment limiter

The device monitors the work of the crane. You can press the key to set the parameters of all working conditions.

When the actual load is less than 90% of rated load, the screen shows load proportional bar in green color, and no warning alarm from the Safe Load Indicator.

When the actual load exceeds 90% of rated load while is less than 100% of rated load, the screen shows yellow color and an intermittent warning alarm sounds.

When the actual load exceeds 100% of rated load while less than 105% of rated load, the monitor screen shows red color and the Safe Load Indicator gives continuous warning alarm, and output control signal.

When the actual load exceeds 105% of rated load, the monitor screen shows red color and gives out a continuous warning alarm, at the same time the Safe Load Indicator put out control signal to stop the hoisting action of main and auxiliary hooks and boom.

Three-color load indicator

The three-color load indicator is installed on the crane in order to inform the personnel on site of the current situation. The driver and the signal personnel are equipped with the interphone for the convenience of contact.

Anemometer

Anemometer- the wind speed sensor is installed on the top of boom to test wind speed. The moment limiter displays wind speed. The driver can specify the working environment referring to the test of wind speed.

The winch, slew brakes and locking devices

Brakes: the brakes on the main and aux. drums, the brakes on the main and aux. derricking drums, slewing brake.
Locking devices: main and auxiliary winch pawls, main derricking drum pawls and slewing locking device.

Pull sensor, angle sensor

The pull sensor is installed on the pendant bar to test the pull.
The angle sensor is installed on the boom foot to test boom angle.

Gradienter

The device is used for testing the angle between the machine and the ground to ensure the conditions of the ground meet the requirements.

Angle scale

The angle scale is installed on the boom foot to show the current angle of boom when the crane is lifting the load.

Limit protection of back stop

The back stop is installed on the boom foot to prevent the tipping-over of the boom due to the heavy load and uncertain wind speed.

Swing alarm

The buzzer is installed on the swing device. The buzzer may sound continuously when the boom derricking reaches limit position.



详细说明

上车结构

动力装置	钢丝绳长度 210m
型号 QSL-9进口康明斯电控柴油机。	最大绳速 116m
类型 水冷式,直喷,带涡轮增压器。	
排量 8.9L	主臂变幅系统
额定功率 209kw/2000rpm	由液压变量柱塞马达通过行星减速机驱动。湿式片式常闭制动器。
最大扭矩 1300N.m/1500rpm	卷筒 节圆直径 φ440mm
燃油油箱容量 200L	钢丝绳直径 φ20mm
液压油箱容积 500L	钢丝绳长度 230m

液压系统

发动机在采用变量双主泵+回转泵+补油泵+伺服泵+冷却泵,一组M7-LUDV多路阀,该系统具有泵控系统	托绳卷扬机
的永远全工作范围控制的精密控制(优于阀控),同时能实现行走、变幅、回转和卷扬复合动作时的组合,油冷却器独立温控散热,回转独立闭式控制,各卷扬独立系统控制。	钢丝绳直径 φ10mm
	钢丝绳长度 200m
	回转系统
	由2个马达通过行星减速机带动齿轮驱动,可旋转360°
	速度 0-1.96转/分钟
	四个位置止动锁锁定。

电子监控系统

电子监控器适时显示并具有故障查询功能,CAN-BUS总线控制。	驾驶室
---------------------------------	------------

主、副提升卷扬装置

主、副提升卷扬装置,由变量柱塞马达通过行星减速机驱动。湿式片式常闭制动器。	司机室与机罩外表面都是烤漆。宽度920mm,前窗采用大弧形面,视野好。带有空调和暖风机,雨刷器、车载VCD系统,大屏幕电子监控器和力矩限制器,采用LED显示器显示风速,可调座椅等,还有采用了扶手椅式控制手柄,十字控制,能够以舒适的姿势进行操作。配置了空调装置,使司机能够在舒适的环境下工作。
---------------------------------------	---

主提升卷扬装置

卷筒 节圆直径 φ610mm	平衡重
钢丝绳直径 φ26mm	配重底板为焊接结构,重约4.3吨,其它由四块7.5吨、一块5.7吨铸铁组成,总量为40吨,采用悬挂式,便于安装和拆卸。
钢丝绳长度 285m	
最大绳速 116m	

副提升卷扬装置

卷筒 节圆直径 φ610mm	
钢丝绳直径 φ26mm	

下车结构

底座
用高强度板焊接X型框架结构,与履带架采用动力梢连接,便于快速安装和拆卸,它们的特点是外形美观,抗扭抗弯性能好。
支重轮装置
每侧各有11个,所有的支重轮均装有铜套和浮动式密封以及耐磨润滑油。
下机架支撑油缸装置
四个液压顶升油缸连接在下机架的支撑梁上进行伸缩动作
履带板
左、右履带行走装置共有110块履带板,每块履带板的宽度为1015mm,履带板的张紧程度可以通过液压千斤顶进行调节,调节垫片的位置达到理想的张紧度。
履带动力
独立的液压驱动系统嵌入履带架内。每侧液压驱动系统包含了一个液压马达并通过行星减速机带动驱动轮,液压马达和减速机嵌入履带架内,不超出履带宽度。
行走速度 0.9/1.3千米/小时
爬坡能力 30%(17°)

作业装置

臂架主销管采用进口高强度管,变幅装置采用钢丝绳和钢丝绳,大大提高了有效载荷。
主臂
臂架为中间等截面,两端变截面的空间桁架式结构,钢管焊接,标准臂从16-73米
固定副臂的组成
固定副臂与主臂有两种角度:10°和30°;主臂和副臂组成:主臂为40-61m的标准臂,副臂为13米-25米。
塔式工况
塔臂与主臂组合,主臂有四种角度:88°、75°、65°、45°;主臂长度从34米-49米,塔臂角度从15°-78°;塔臂长度从19米-46米,主臂+塔臂的最大长度为:49米+28米、46米+46米。
轻型组合臂
轻型组合臂:主臂35米+12米(过度节架)+塔臂34.5米=81.5米。
吊钩
120吨吊钩 50吨吊钩 9吨吊钩

Specifications

Superstructure

Power device	Length of wire rope: 210m
Model: QSL-9 diesel engine imported from Cummins	Maximum rope speed: 116m
Type: water-cooled, direct fuel injection, with turbocharger actuator	Boom derricking system
Displacement: 8.9L	The planetary reduction gear drives hydraulic piston motor with variable displacement. The brake is often closed.
Rated power: 209kw/2000 rpm	Drum: diameter φ440mm
Maximum torque: 1300N.m/1500rpm	Diameter of wire rope: φ20mm
Capacity of fuel box: 200L	Length of wire rope: 230m
Capacity of hydraulic oil box: 500L	Maximum rope speed: 54m
Hydraulic system	Drum rope drum
The system adopts variable displacement double main pump, slewing pump, oil filling pump, servo pump, cooling pump and M7-LUDV multi-circuit valve. The pump system is superior to valve control. The system can realize compound action: travel, derricking, slewing and lifting. The oil cooler functions well. Slewing is controlled independently and all lifting devices are also controlled independently.	Diameter of wire rope: φ10mm
Electric monitor system	Length of wire rope: 200m
The electric monitor displays the values and has the function of troubleshooting. It is controlled by CAN-BUS.	Slewing system
Main /aux. hoisting device	The slewing system can be turned by 360°. There are two motors in the system. The planetary reduction gear drives the gear teeth.
The main and aux. hoisting devices are driven by piston motor through reduction gear. The brake type: wet, disc and closed brake	Slewing speed: 0-1.96rpm
Main hoisting device	Four pins are locked
Drum: the diameter φ610mm	Cabin
The diameter of wire rope: φ26mm	The outside of cabin is painted well. The length of the cabin is 920mm. The front window is inclined and the posts are designed with the cross section with high strength. There are air-conditioner, heater, rear view mirror, wiper, stereos and fire extinguisher in the cabin. The electric monitor and moment limiter with large screen are in the cabin. The seat can be adjusted.
Length of wire rope 285m	Counterweight
Maximum rope speed: 116m	The tray of counterweight is welded. Its weight is 4.3t: the total weight of counterweight is 40t. The counterweight consists of 4 x 7.5t blocks and 5.7t cast iron. The counterweight is suspending for the convenience of installation and disassembly.
Aux. hoisting device	
Drum: the diameter φ610mm	
Diameter of wire rope: φ26mm	

Undercarriage

Lower frame
X-type structure welded with steel plate which has high strength. The Lower frame connects side frames with drive pins for convenience of installation and disassembly. It has features: beautiful appearance and good torsion-resistance.
Track Roller
Each side has 11 track rollers. All track rollers are equipped with bushings, seals and lubricating oil.
Jack-up cylinders
The four hydraulic jack-up cylinders are connected with the beam.
Track shoe
The left and right crawlers have 110 track shoes. The width of the track shoe is 1015mm. The tension state of track shoe can be adjusted by the hydraulic jack until the adjusting plate has the ideal position.
The Crawler drive
The independent hydraulic driving system is inside the crawler frame. Every hydraulic driving system has a hydraulic motor. The hydraulic motor and planetary reduction gear in the crawler frame can not exceed the width of the track shoe.
Travel speed
0.9/1.3 km/h
Grade ability
30%(17°)
Working Equipments

The main steel pipe with high strength is imported. The derricking device adopts the pendant rope to improve the efficiency.
Main boom
The insert section has the equal cross section. The top and the foot have the variable cross sections. The boom is the lattice structure welded with steel pipes. Standard boom: 16-73m
Fixed jib combination
Two kinds of angles between main boom and fixed jib: 10° and 30°. Main boom and fixed jib: main boom 40-61m, fixed jib 13m-25m.
Luffing jib
When mounted with luffing jib, main boom has four kinds of angle: 88°, 75°, 65°, 45°. The length of main boom is 34m-49m.
The angle of luffing jib is from 15° to 78°; the length of luffing jib is 19m-46m. Maximum length of main boom plus luffing jib: 49m+28m, 46m+46m.
Light duty boom combination
Light duty boom: Main boom 35+12m (tapered section)+luffing jib 34.5m=81.5m.

工况符号

The symbols of working conditions



标准主臂工况
Standard Boom



加长主臂工况
Runner



轻型组合臂工况
Light Duty Boom



固定副臂工况
Fixed jib



塔式工况
Luffing jib



臂杆组合

Boom Combination

标准主臂

最大起重量: 120吨x5米
最大臂杆长度: 73米

Standard boom
Maximum lifting capacity
120t x 5m
Maximum length
73m



主臂 Boom
16m-73m

加长主臂

最大起重量: 9吨x26米
最大臂杆长度: 61米

Runner
Maximum lifting capacity
9t x 26m
Maximum length
61m



主臂 Boom
16m-61m

轻型组合臂

最大起重量: 36.5吨x10米
最大臂杆长度: 81.5米

Light duty boom combination
Maximum lifting capacity
36.5t x 10m
Maximum length
81.5m



主臂 Boom
48.5m-81.5m

固定副臂

最大起重量: 13.2吨x14米
最大组合: 61米+25米

Fixed jib
Maximum lifting capacity
13.2t x 14m
Maximum combination
61m + 25m



主臂 Boom
40m-61m
副臂 Jib
13m-25m

塔式工况

最大起重量: 37.2吨 x 6.7米
最大组合: 46+46米

Luffing jib
Maximum lifting capacity
37.2t x 6.7m
Maximum combination
46m + 46m



主臂 Boom
34m-49m
塔臂 Luffing jib
19m-46m

主要技术参数

Technical Data

项 目	单 位	数 值	
主臂最大额定起重量	t	120	
主臂长度	m	16-73	
主臂变幅角度	°	30-80	
固定副臂长度	m	13-25	
固定副臂变幅角度	°	10; 30	
塔式主臂+固定副臂的最大长度	m	61+25	
塔式主臂	m	34-49	
塔臂	m	19-46	
塔式主臂+塔臂最大长度	m	49+46; 46+46	
轻型组合臂	m	48.5-81.5	
吊钩配置	t	120/50/9	
工作速度	绳速	提升	m/min ※高速116/57 低速82/41
		下降	m/min ※高速116/57 低速82/41
	起重臂上升	m/min	※ 54
		起重臂下降	m/min
	回转速度	r/min	0~1.95
	行走速度	km/h	0.9~※ 1.3
主提升倍率	12	单绳拉力	10t
爬坡能力(带基本臂,司机室置于后方)	%		30
柴油机额定输出功率/转速	kw/r/min	康明斯QSL9209/2000	
整机质量	t		110
接地比压	MPa		0.08
配重质量	t		40
主臂最大额定起重量	t		120
最大起重量矩	t.m		600

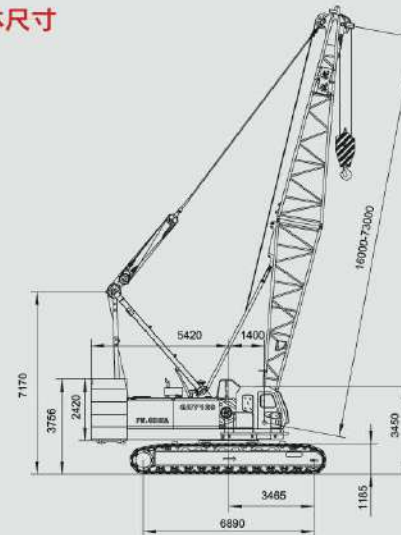
Descriptions	Unit	Data	
Maximum Rated load Capacity (Main Boom)	t	120	
Length of standard boom	m	16 - 73	
Boom angle	°	30 - 80	
Length of fixed jib	m	13 - 25	
Angle of fixed jib	°	10 ; 30	
Maximum length of main boom plus fixed jib	m	61 + 25	
Length of main boom when mounted with luffing jib	m	34 - 49	
Length of luffing jib	m	19 - 46	
Maximum length of main boom plus luffing jib	m	49 + 46; 46 + 46	
Length of light duty boom	m	48.5 - 81.5	
Kinds of hook	t	120/50/9	
Working speed	Rope speed	Hoisting	m/min ※High speed 116/57 Low speed 82/41
		Lowering	m/min ※High speed 116/57 Low speed 82/41
	Boom rise	m/min	※ 54
		Boom lower	m/min
	Swing speed	r/min	0 ~ 1.95
	Travel speed	km/h	0.9 ~ ※ 1.3
Parts of line	12	Single line pull	10t
Grade ability (with boom forward and the cabin in the rear)	%		30
Rated power output/rotation speed of diesel engine	kw/r/min	Cummins QSL9209/2000	
Mass of whole machine	t		110
Ground pressure	MPa		0.08
Counterweight	t		40
Maximum rated load capacity (Boom)	t		120
Maximum rated load moment	t.m		600

注: ※速度是随载荷的不同而变化

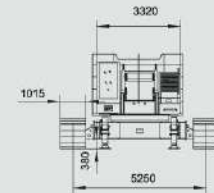
Note: Speed with※ may vary with load.

总体尺寸

Overall Dimensions



标准主臂
Standard Boom



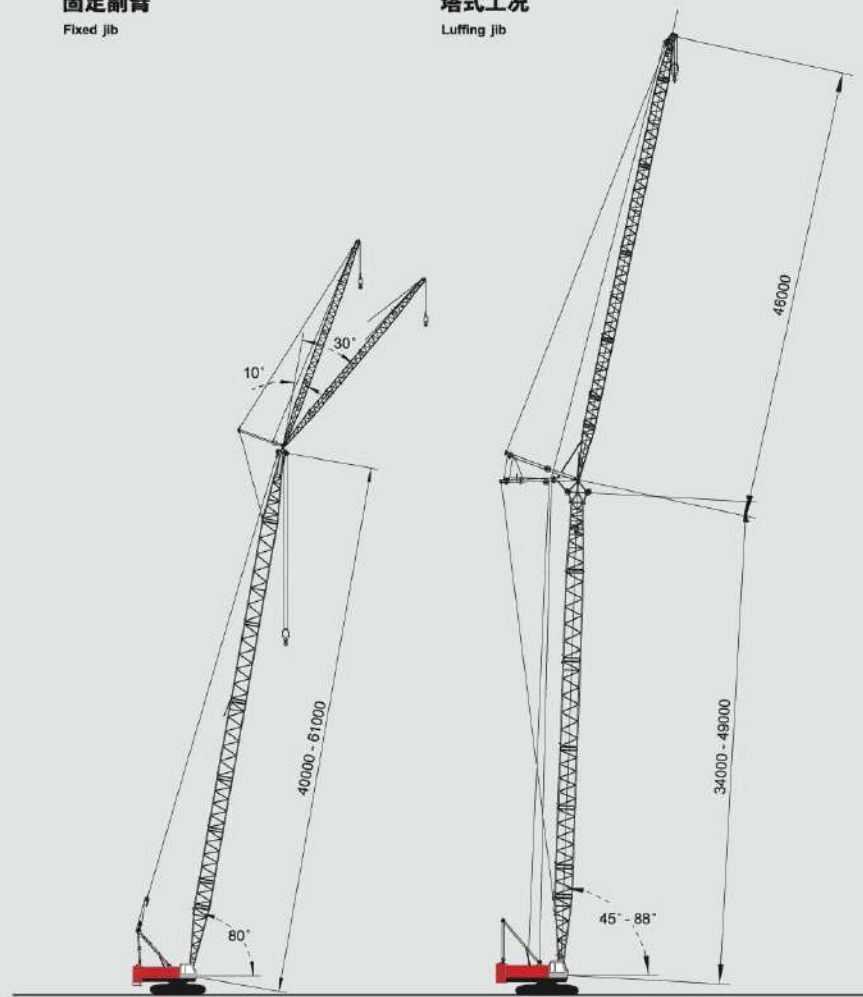


总体尺寸

Overall Dimensions

固定副臂
Fixed jib

塔式工况
Luffing jib



主臂和副臂组合

Main Boom and Jib Combinations

标准主臂工况臂节组合

Boom Combination

注解

16m	
19m	
22m	
25m	
28m	
31m	
34m	
37m	
40m	
43m	
46m	
49m	
52m	
55m	
58m	
61m	
64m	
67m	
70m	
73m	

符号	臂杆长度	备注
	8米	8米下节臂
	8米	3米上节臂
	3米	3米中间节臂
	6米	6米中间节臂
	9米	9米中间节臂
	12米	12米中间节臂

Note

Symbol	Boom length	Remarks
	8m	8m Boom foot
	8m	8m Boom top
	3m	3m intermediate section
	6m	6m intermediate section
	9m	9m intermediate section
	12m	12m intermediate section

轻型组合臂工况臂节组合

Light Duty Boom Combination

48.5m	
51.5m	
54.5m	
57.5m	
60.5m	
63.5m	
66.5m	
69.5m	
72.5m	
75.5m	
78.5m	
81.5m	

注解 Note

符号	臂杆长度	备注
	8米(m)	8米下节臂
	4.5米(m)	4.5米上节臂
	3米(m)	3米中间节臂
	6米(m)	6米中间节臂

注解 Note

符号	臂杆长度	备注
	9米(m)	9米中间节臂
	12米(m)	12米过渡臂节
	3米(m)	3米塔臂中间节臂
	6米(m)	6米塔臂中间节臂
	9米(m)	9米塔臂中间节臂



主臂和副臂组合

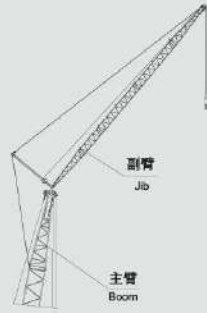
Boom and Jib Combinations

固定副臂工况臂节组合

Fixed Jib Combination

副臂长度 Jib length	副臂组合 Jib Combination
13m	
19m	
25m	

主臂长度 40米-61米



注解

符号	副臂长度	备注
	5 米	5米下节臂
	5 米	5米上节臂
	3 米	3米中间节臂
	6 米	6米中间节臂

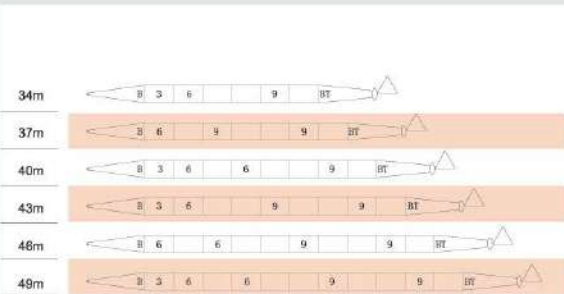
Note

Symbol	Jib length	Remarks
	5m	5m boom foot
	5m	5m boom top
	3m	3m insert section
	6m	6m insert section

塔式工况主臂臂节组合

Boom combination

注解



符号	塔臂长度	备注
	8米	8米下节臂
	8米	8米上节臂
	3米	3米中间节臂
	6米	6米中间节臂
	9米	9米中间节臂

Note

Symbol	Boom length	Remarks
	8m	8m Boom foot
	8m	8m Boom top
	3m	3m intermediate section
	6m	6m intermediate section
	9m	9m intermediate section

塔式工况副臂臂节组合

Luffing jib combination

注解



符号	副臂长度	备注
	5.5米	5.5米下节臂
	4.5米	4.5米上节臂
	3 米	3米中间节臂
	6 米	6米中间节臂
	9 米	9米中间节臂

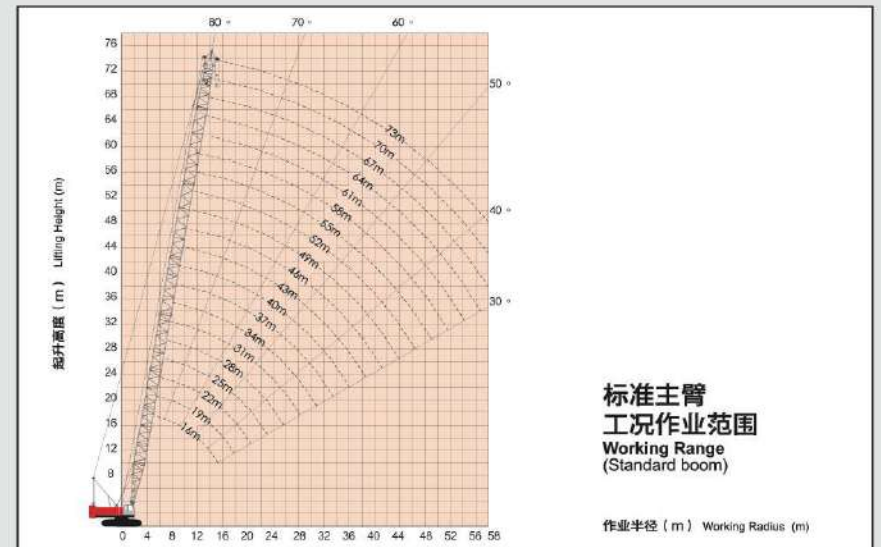
Note

Symbol	Length of luffing jib	Remarks
	5.5m	5.5m boom foot
	4.5m	4.5m boom top
	3 m	3m insert section
	6 m	6m insert section
	9 m	9m insert section

标准主臂工况载荷表

Load Chart (Standard boom)

14m-73m	16	22.0	28.0	34.0	40.0	46.0	52.0	58.0	64.0	70.0	73.0	40t													
5.0	120											5.0													
6.0	100	97.7	81.1									6.0													
7.0	82.1	78.5	74.7	63.7								7.0													
8.0	66.4	65.4	62.6	59.9	51.8							8.0													
9.0	55.6	55.2	53.7	51.6	49.5	43.2						9.0													
10.0	47.8	47.4	47.0	45.2	43.4	41.7	36.8	31.5				10.0													
12.0	37.1	36.7	36.3	36.0	34.7	33.4	32.2	30.9	27.4			12.0													
14.0	30.1	29.7	29.3	28.0	26.6	26.7	26.7	25.6	24.6	23.5	22.1	14.0													
16.0	26.5	24.9	24.4	24.1	23.7	23.4	22.8	21.6	20.8	19.8	19.3	16.0													
18.0		21.3	20.8	20.5	20.1	19.6	19.5	18.6	17.9	17.0	16.5	18.0													
20.0			18.5	17.6	17.3	17.0	16.8	16.2	15.5	14.7	14.3	20.0													
22.0				15.9	15.5	15.1	14.8	14.5	14.2	13.6	12.9	12.5	22.0												
24.0					14.1	13.7	13.3	13.0	12.7	12.4	12.1	11.3	11.0	24.0											
26.0						12.7	12.1	11.8	11.5	11.2	10.9	10.7	10.0	26.0											
28.0							10.7	10.5	10.2	9.9	9.6	9.4	8.8	28.0											
30.0								9.9	9.5	9.1	8.9	8.6	8.4	8.0	30.0										
32.0									8.6	8.2	7.9	7.6	7.3	7.0	6.8	32.0									
34.0										7.8	7.4	7.1	6.8	6.5	6.2	6.0	34.0								
36.0											7.0	6.7	6.4	6.1	5.8	5.5	5.3	36.0							
38.0												6.1	5.8	5.5	5.3	4.9	4.6	38.0							
40.0													5.5	5.2	4.9	4.7	4.3	4.1	40.0						
42.0														5.1	4.7	4.4	4.2	3.8	3.6	42.0					
44.0															4.2	3.9	3.7	3.3	3.1	44.0					
46.0																3.9	3.5	3.3	2.9	2.7	46.0				
48.0																	3.1	2.9	2.5	2.3	48.0				
50.0																		2.8	2.6	2.2	1.9	50.0			
52.0																			2.5	2.1	1.9	1.6	52.0		
54.0																				1.8	1.6	1.3	54.0		
56.0																					1.7	1.3	1.1	56.0	
58.0																						1.6	1.0	0.8	58.0
60.0																							0.6	0.0	60.0

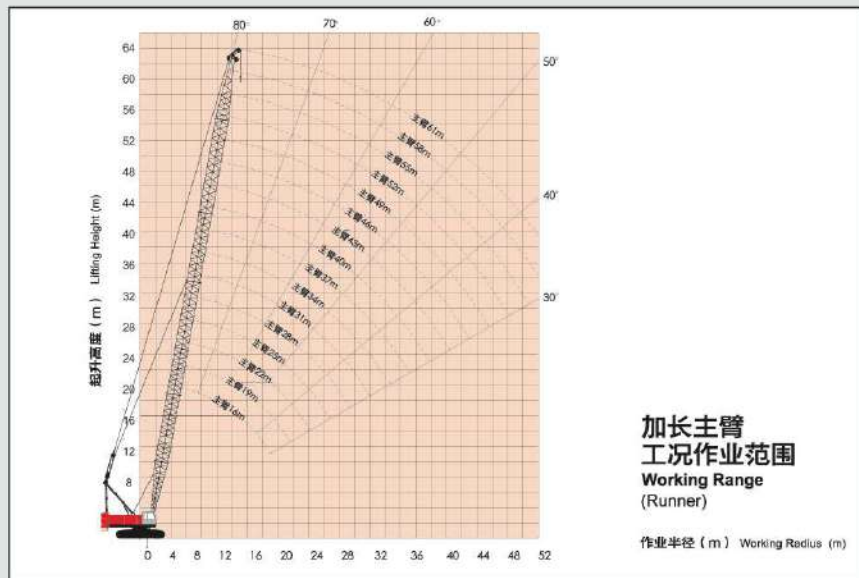




加长主臂工况载荷表

Load Chart (Runner)

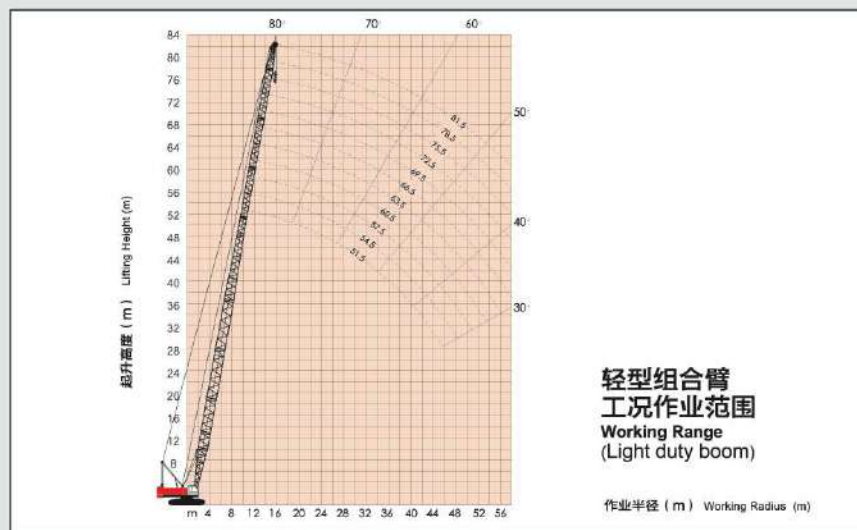
L 16m-61m		360°		40t						
m	16	22	28	34	40	46	52	58	61	m
5	5.2m 9.0t									5
5.3	9									5.3
6	9	6.3m 9.0t								6
7	9	9	7.3m 9.0t							7
8	9	9	9	8.4m 9.0t						8
9	9	9	9	9	9.7m 9.0t					9
10	9	9	9	9	9	10.6m 9.0t	11.7m 9.0t			10
12	9	9	9	9	9	9	9	12.7m 9.0t	13.0m 9.0t	12
14	9	9	9	9	9	9	9	9	9	14
16	9	9	9	9	9	9	9	9	9	16
18	9	9	9	9	9	9	9	9	9	18
20	9	9	9	9	9	9	9	9	9	20
22	9	9	9	9	9	9	9	9	9	22
24	9	9	9	9	9	9	9	9	9	24
26	9	9	9	9	9	24.0m 9.0t	25.3m 9.0t	25.1m 9.0t	24.6m 9.0t	26
28		22.2m 9.0t	24.1m 9.0t	25.0m 9.0t	7.9	7.6	7.5	7.4		28
30			7.6	7.2	7	6.8	6.6	6.5		30
32			6.7	6.5	6.3	6.1	5.9	5.8		32
34			32.4m 9.0t	5.9	5.7	5.5	5.3	5.2		34
36			5.4	5.2	4.9	4.7	4.6			36
38			37.6m 9.0t	4.7	4.4	4.2	4.1			38
40				4.2	4	3.8	3.6			40
42				3.8	3.6	3.3	3.2			42
44				42.8m 9.0t	3.2	2.9	2.8			44
46				2.9	2.5	2.4				46
48				2.4	2.2	2.1				48
50					1.9	1.8				50
52					1.6	1.5				52



轻型组合臂工况载荷表

Load Chart (Light duty boom)

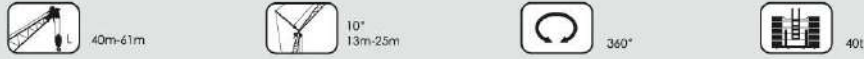
L 51.5m-81.5m		360°		40t				
m	48.5	54.5	60.5	66.5	72.5	78.5	81.5	m
10	36.5	28.6/10.9m						10
12	29.8	27.9	17.5/11.9m	10.7/13.0m				12
14	24.9	23.8	16.5	10.4	6.3	3.2/15.0m	2.0/15.6m	14
16	21.3	20.4	15.6	9.7	5.8	3	1.9	16
18	18.5	17.7	14.7	9.1	5.3	2.6	1.5	18
20	16.3	15.6	14	8.5	4.8	2.3	1.2	20
22	14.5	13.8	13.1	7.9	4.4	1.9	0.9	22
24	13	12.4	11.7	7.4	4	1.6		24
26	11.7	11.1	10.5	6.9	3.6	1.3		26
28	10.6	10	9.5	6.4	3.3	1		28
30	9.6	9.1	8.6	6	2.9			30
32	8.8	8.3	7.8	5.5	2.6			32
34	8.1	7.6	7.1	5.1	2.2			34
36	7.4	7	6.5	4.6	1.9			36
38	6.7	6.4	6	4.2	1.6			38
40	6.1	5.9	5.5	3.8	1.2			40
42	5.6	5.4	5.1	3.4				42
44	5.3/43.4m	5	4.7	3				44
46		4.5	4.3	2.5				46
48		4.1	3.9	2.1				48
50		4.0/48.6m	3.6	1.6				50
52			3.3	1.2				52
54			3.0/53.8m					54
56								56
58								58





固定副臂工况载荷表

Load Chart (Fixed jib)



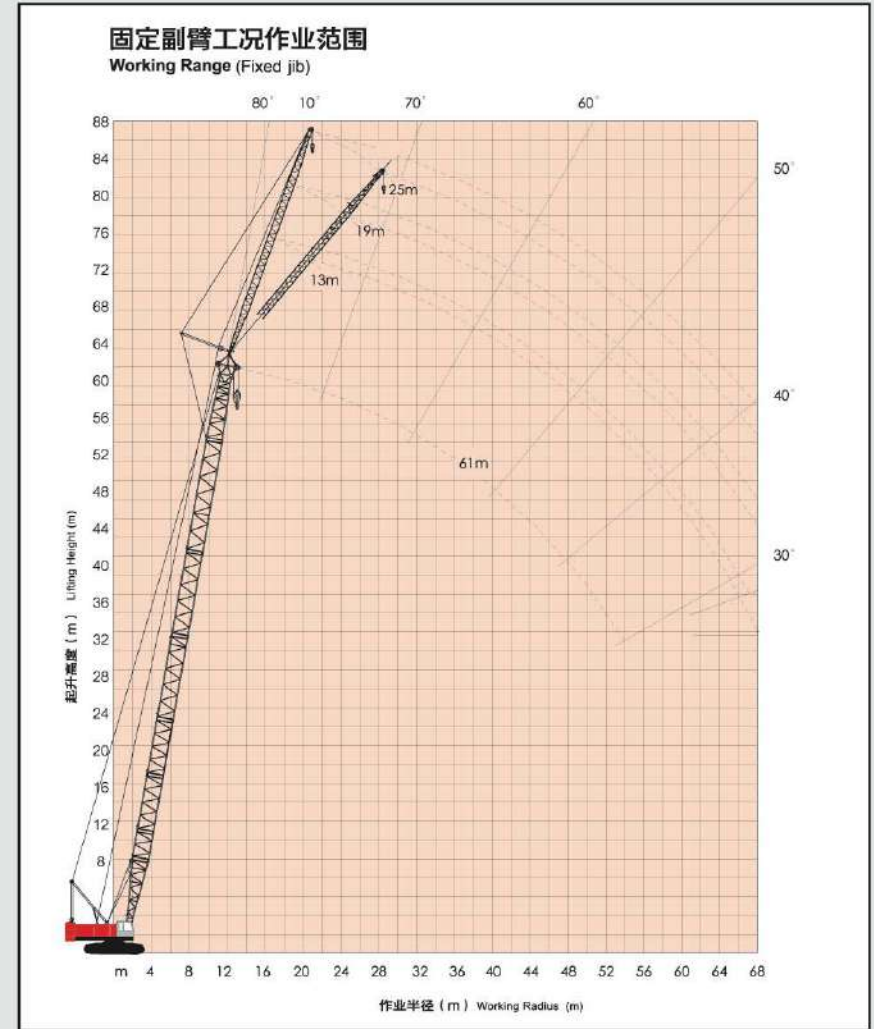
n	40			46			52			58			61			n	
	13	19	25	13	19	25	13	19	25	13	19	25	13	19	25		
14	13.2															14	
16	13			13.1			13.3									16	
18	12.7	9	6.3	12.9	9.1		13	9.2		13.2			12.8			18	
20	12.4	8.8	6.2	12.6	8.9	6.3	12.4	9	6.3	11.7	9.1		11.4	9.2		20	
22	12.2	8.6	6	11.3	8.7	6.1	11.1	8.8	6.2	10.5	9	6.3	10.1	9	6.3	22	
24	12	8.4	5.8	10.1	8.5	5.9	10	8.7	6.1	9.4	8.8	6.1	9.1	8.9	6.2	24	
26	11.6	8.2	5.7	9.6	8.4	5.8	9.1	8.5	5.9	8.5	8.6	6	8.2	8.3	6.1	26	
28	10.4	8	5.5	8.8	8.2	5.7	8.3	8.3	5.8	7.8	7.8	5.9	7.5	7.5	5.9	28	
30	9.4	7.8	5.4	8.1	8	5.5	7.6	7.6	5.6	7.1	7.1	5.8	6.8	6.9	5.8	30	
32	8.5	7.7	5.2	7.5	7.5	5.4	7	7	5.5	6.5	6.6	5.6	6.2	6.3	5.7	32	
34	7.6	7.3	5.1	6.8	6.9	5.3	6.4	6.5	5.4	6	6	5.5	5.7	5.8	5.6	34	
36	7.1	7	5	6.3	6.4	5.1	5.9	6	5.6	5.5	5.6	5.4	5.2	5.3	5.3	36	
38	6.6	6.8	4.9	5.7	6	5	5.4	5.6	5.2	5.1	5.2	5.1	4.8	4.9	4.9	38	
40	6	6.3	4.7	5.3	5.5	4.9	5	5.2	5.1	4.7	4.8	4.8	4.3	4.5	4.5	40	
42	5.5	5.8	4.6	4.9	5.1	4.6	4.6	4.8	4.7	4.3	4.4	4.4	4	4.2	4.2	42	
44	4.7	5.4	4.5	4.4	4.6	4.7	4.2	4.4	4.5	4	4.1	4.1	3.9	3.9	3.9	44	
46	4.4	5	4.4	4.1	4.2	4.6	3.8	4.1	4.2	3.6	3.8	3.8	3.5	3.6	3.6	46	
48	4	4.6	4	3.8	3.9	4.1	3.5	3.7	3.9	3.3	3.5	3.5	3.1	3.3	3.4	48	
50	3.8	4.3	4	3.5	3.6	3.9	3.2	3.5	3.6	3	3.2	3.3	2.9	3.1	3.1	50	
52		4	3.9	3.3	3.4	3.6	3	3.2	3.3	2.8	3	3.1	2.8	2.8	2.9	52	
54			3.7	3.8	3	3.2	3.3	2.7	2.9	3.1	2.5	2.7	2.9	2.6	2.7	54	
56			3.5	3.8	3	3.1	2.5	2.7	2.8	2.3	2.5	2.6	2.1	2.3	2.5	56	
58				3.4	2.8	2.9	2.3	2.5	2.6	2.1	2.3	2.4	1.9	2.1	2.3	58	
60				3.2	2.6	2.7	2.1	2.3	2.4	1.9	2.1	2.2	1.7	1.9	2.1	60	
62					2.9			2.1	2.2	1.7	1.9	2	1.5	1.7	1.9	62	
64								2.3	1.9	2.1	1.5	1.7	1.8	1.4	1.6	64	
66								2.2	1.8	1.9	1.4	1.5	1.7	1.2	1.4	1.5	66
68									1.8	1.9	1.4	1.5	1.7	1.2	1.4	1.5	68



n	40			46			52			58			61			n	
	13	19	25	13	19	25	13	19	25	13	19	25	13	19	25		
18	11.5															18	
20	11.4			11.5			11.5									20	
22	11.3	7.6		11.4			11.4			11.1			10.8			22	
24	11.2	7.5		11.1	7.6		10.5	7.6		10			9.7			24	
26	10.5	7.4	4.9	10	7.5		9.5	7.5		9	7.6		8.8	7.5		26	
28	9.6	7.3	4.8	9.2	7.4	4.8	8.7	7.4	4.9	8.2	7.5		7.9	7.5		28	
30	8.7	7.2	4.7	8.4	7.3	4.8	7.9	7.3	4.8	7.5	7.4	4.9	7.2	7	4.9	30	
32	7.9	7.1	4.6	7.8	7.2	4.7	7.3	7.2	4.7	6.9	7	4.8	6.6	6.7	4.8	32	
34	7.3	7	4.5	7.1	7.1	4.6	6.7	6.8	4.7	6.3	6.5	4.7	6.1	6.3	4.7	34	
36	6.7	6.9	4.4	6.5	6.8	4.5	6.2	6.4	4.6	5.8	6	4.5	5.6	5.8	4.7	36	
38	6.1	6.4	4.4	5.9	6.3	4.4	5.7	5.9	4.5	5.4	5.6	4.6	5.1	5.4	4.6	38	
40	5.6	5.9	4.3	5.5	5.8	4.4	5.2	5.5	4.4	4.9	5.2	4.5	4.7	4.9	4.5	40	
42		5.5	4.2	5	5.3	4.3	4.8	5.1	4.4	4.6	4.8	4.5	4.4	4.6	4.5	42	
44		5.1	4.2	4.6	4.9	4.3	4.4	4.7	4.3	4.2	4.4	4.4	4	4.2	4.4	44	
46		4.7	4.1		4.5	4.2	4	4.3	4.3	3.8	4.1	4.3	3.7	3.9	4.1	46	
48			4.1		4.2	4.4	3.7	4	4.2	3.5	3.8	4	3.3	3.6	3.8	48	
50			4		3.9	4.1	3.4	3.7	3.9	3.2	3.5	3.7	3	3.4	3.5	50	
52				4			3.8		3.4	3.6	2.9	3.2	3.4	2.8	3.1	3.3	52
54							3.5		3.1	3.3	2.6	2.9	3.2	2.5	2.8	3	54
56						3.3			3.1			2.7	2.9	2.2	2.5	2.8	56
58									2.8			2.4	2.7		2.3	2.6	58
60								2.6					2.4		2.1	2.3	60
62													2.2		2.1	2.1	62
64														2	1.9	1.9	64
66															1.7	1.7	66

固定副臂工况作业范围

Working Range(Fixed jib)





塔式工况载荷表

Load Chart (Luffing jib)



主臂长度34米 Boom length 34m							
	19	25	31	37	43	46	
6.6	37.2						6.6
8	35.8	25.7					8
10	30.1	25.7	17.8	12.5			10
14	19	18.7	17.8	12.4	8.6	7	14
18	13.6	13.4	13	12.4	8.5	6.9	18
22	11.2/21.0m	10.3	9.9	9.5	8.4	6.9	22
26		8.3	7.9	7.5	7.2	7	26
30			6.4	6.1	5.8	5.6	30
34				5	4.7	4.6	34
36				4.2	3.9	3.7	36
42					3.3	3.1	42
46						2.6	46
48						2.4/47.1m	48
主臂长度37米 Boom length 37m							
	19	25	31	37	43	46	
6.7	37.2						6.7
8	35.6	25.7					8
10	30.5	25.7	17.8	12.4/10.5m	8.6/11.7m		10
14	19.1	18.9	17.8	12.4	8.5	7	14
18	13.7	13.5	13.1	12.4	8.5	6.9	18
22	11.2/21.1m	10.3	10	9.6	8.4	6.9	22
26		8.3	7.9	7.6	7.3	6.8	26
30			6.5	6.1	5.8	5.6	30
34				5	4.8	4.6	34
36				4.3	3.9	3.8	36
42					3.3	3.1	42
46						2.6	46
48						2.4/47.2m	48
主臂长度40米 Boom length 40m							
	19	25	31	37	43	46	
7	34.5/6.8m						7
9	30.4	25.6	17.7/9.3m				9
12	23.9	23.6	17.7	12.4	8.5	7.0/12.4m	12
16	16.2	15.9	15.5	12.3	8.5	6.9	16
20	12.1	11.8	11.4	11.1	8.4	6.9	20
24		9.2	8.9	8.5	8.2	6.8	24
28		7.9/27.0m	7.2	6.8	6.5	6.3	28
32			5.9	5.6	5.3	5.1	32
36				4.6	4.3	4.2	36
40				4.1/38.6m	3.6	3.4	40
44					3	2.8	44
48						2.4/47.3m	48

塔式工况载荷表

Load Chart (Luffing jib)



主臂长度43米 Boom length 43m							
	19	25	31	37	43	46	
7	27.0/6.9m						7
9	24.3	21.9	17.7/9.4m				9
12	21.4	19.4	17.1	12.3	8.5/11.9m	7.0/12.5m	12
16	16.3	16.1	15	12.3	8.4	6.9	16
20	12.1	11.9	11.5	11.1	8.4	6.8	20
24		9.3	9	8.6	8.3	6.8	24
28		7.9/27.1m	7.2	6.9	6.6	6.4	28
32			5.9	5.6	5.3	5.1	32
36				4.7	4.4	4.2	36
40				4.1/38.7m	3.6	3.5	40
44					3	2.9	44
48						2.4/47.4m	48
主臂长度46米 Boom length 46m							
	19	25	31	37	43	46	
7	24.4						7
9	22.1	20.7	17.4/9.5m				9
12	19.4	17.7	15.9	12.3	8.5	7.0/12.7m	12
16	16.5	15.4	14	12.3	8.4	6.9	16
20	12.2	12	11.6	11.1	8.4	6.9	20
24		9.4	9	8.7	8.3	6.7	24
28		7.9/27.2m	7.2	6.9	6.6	6.4	28
32			6	5.6	5.3	5.2	32
36				4.7	4.4	4.2	36
40				4.1/38.8m	3.6	3.5	40
44					3	2.9	44
48						2.4/47.5m	48
主臂长度49米 Boom length 49m							
	19	22	25	28	31	34	
7	22.0/7.1m	20.2/7.8m					7
8	21	20	18.7/6.4m				8
9	20	19.1	18.2	17.2			9
10	19.1	18.2	17.4	16.5			10
12	17.5	16.8	16.1	15.2			12
14	16.2	15.5	14.8	14.2			14
16	15.1	14.5	13.9	13.2			16
18	14.1	13.6	13	12.4			18
20	12.3	12.3	12.1	11.7			20
22	11.2/21.5m	10.7	10.6	10.4			22
24		9.6	9.4	9.2			24
26		9.3/24.4m	8.4	8.2			26
28			7.9/27.3m	7.5			28
30				6.8			30



塔式工况载荷表

Load Chart (Luffing jib)



		主臂长度34米 Boom length34m							
		19	25	31	37	43	46		
18	16.3/18.9m							18	
22	13.7	12.9						22	
26	11.6	10.9	10.1	9.3/26.2m				26	
30	10.5/29.0m	9.4	8.7	8	7.4	6.8		30	
34		8.2	7.6	7	6.4	6.1		34	
38			6.4	6.1	5.6	5.3		38	
42			5.7/40.6m	5	4.7	4.5		42	
46				4.2	3.9	3.7		46	
50					3.2	3.1		50	
54						2.6		54	
		主臂长度37米 Boom length37m							
		19	25	31	37	43	46		
19	14.3/19.4m							19	
22	13.1	12.3/21.9m						22	
26	11	10.3	9.6	8.5/27.0m				26	
30	9.8/29.7m	8.9	8.2	7.5	7.0/29.6m	6.3/30.8m		30	
34		7.9	7.2	6.6	6	5.6		34	
38			6.5	5.8	5.2	4.9		38	
42			5.7/41.3m	5.2	4.7	4.3		42	
46				4.3	4	3.9		46	
50					3.4	3.2		50	
56						2.4/55.8m		56	
		主臂长度40米 Boom length40m							
		19	25	31	37	43	46		
20	13.5/20.2m							20	
24	11.3	10.6	9.3/25.3m					24	
28	9.7	9	8.3	7.7/27.6m				28	
32	9.0/30.5m	7.9	7.2	6.5	5.9	5.6/31.8m		32	
36		7.1	6.4	5.7	5.2	4.8		36	
40			5.8	5.1	4.6	4.2		40	
44				4.6	4.1	3.8		44	
48				4.1/47.9m	3.7	3.4		48	
52					3.2	3		52	
56						2.5		56	

塔式工况载荷表

Load Chart (Luffing jib)



		主臂长度43米 Boom length43m							
		19	25	31	37	43	46		
21	12.5							21	
24	10.9	10.2						24	
28	9.4	8.7	7.9	7.0/28.6m				28	
32	8.5/31.3m	7.6	6.9	6.2	5.6	5.1/32.4m		32	
36		6.8	6.1	5.4	4.8	4.5		36	
40			5.5	4.8	4.3	3.9		40	
44			5.2/42.9m	4.4	3.8	3.5		44	
48				4.1	3.5	3.1		48	
52					3.2	2.9		52	
56						2.6		56	
		主臂长度46米 Boom length46m							
		19	25	31	37	43	46		
22	11.4/21.7m							22	
26	9.5	8.8	7.7/26.9m					26	
30	8.3	7.6	6.9	6.1				30	
34		6.7	6	5.3	4.7	4.4		34	
38			6.1/37.9m	5.4	4.7	4.1	3.8	38	
42				4.9	4.2	3.7	3.3	42	
46					3.9	3.3	3	46	
50					3.6/49.5m	3	2.7	50	
54						2.8	2.5	54	
58							2.3	58	
		主臂长度49米 Boom length49m							
		19	22	25	28	31	34		
22	10.3/22.5m							22	
24	9.6	9.3/23.8m	8.5/25.1m					24	
26	8.9	8.5	8.2	7.6/26.3m				26	
28	8.3	7.9	7.6	7.2				28	
30	7.7	7.4	7.1	6.7				30	
32	7.3	6.9	6.6	6.2				32	
34	7.2/32.8m	6.8	6.2	5.8				34	
36		6.3/35.7m	5.9	5.5				36	
38			5.7	5.3				38	
40				5.6/38.6m	5			40	
42					4.9/41.5m			42	



塔式工况载荷表

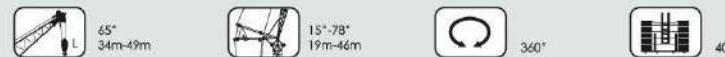
Load Chart (Luffing jib)



		主臂长度34米 Boom length34m							
		19	25	31	37	43	46		
27	9.3/27.3m								27
30	8.4	7.6/30.7m							30
34	7.5	6.8	6.1/34.2m						34
38		6.1	5.5	4.9/37.6m					38
42		5.8/40.6m	4.9	4.3	3.8	3.4/42.8m			42
46			4.5	3.9	3.3	3			46
50				3.5	3	2.7			50
54					2.8	2.4			54
58					2.6	2.2			58
60						2.2			60
		主臂长度37米 Boom length37m							
		19	25	31	37	43	46		
28	8.2/28.6m								28
32	7.3	6.7							32
36	6.6	5.9	5.4/36.5m						36
40		5.3	4.7	4.1					40
44			4.2	3.6	3.1	2.8/44.1m			44
48			4.0/47.6m	3.3	2.8	2.5			48
52				3	2.5	2.2			52
56					2.3	2			56
60						1.8			60
		主臂长度40米 Boom length40m							
		19	25	31	37	43	46		
30	7.2/29.6m								30
34	6.3	5.7							34
38	5.8/37.3m	5.1	4.4						38
42		4.6	3.9	3.3					42
46			3.6	3	2.5	2.2			46
50				2.7	2.2	1.9			50
54				2.5	2	1.7			54
58					1.8	1.5			58
60						1.4			60

塔式工况载荷表

Load Chart (Luffing jib)



		主臂长度43米 Boom length43m							
		19	25	31	37	43	46		
31	6.5/31.1m								31
34	5.9	5.2/34.5m							34
38	5.3	4.7	4.1						38
42		4.3	3.6	3.1/41.4m					42
46			3.3	2.7	2.1	1.8/46.6m			46
50			3.1	2.4	1.9	1.6			50
54				2.2	1.7	1.4			54
58					1.6	1.2			58
		主臂长度46米 Boom length46m							
		19	25	31	37	43	46		
32	6.6/32.4m								32
36	5.1	4.4/36.8							36
40	4.6/39.8m	3.9	3.4/39.3m						40
44		3.6	3	2.3					44
48			2.7	2.1	1.6	1.2/47.9m			48
52				1.9	1.4				52
56									56
		主臂长度48米 Boom length48m							
		19	22	25	28	31	34		
34	4.7/33.6m								34
36	4.4	4.2/35.4m							36
38	4.2	3.9	3.1/37.1m	3.1/38.8m					38
40	4	3.7	3.4	3					40
42	3.9/41.0	3.5	3.2	2.9					42
44		3.4	3.1	2.7					44
46			3	2.6					46
48				2.5					48
50					2.5/49.9m				50



塔式工况载荷表

Load Chart (Luffing jib)



主臂长度34米 Boom length34m					
42	19	25	31	37	42
46	4.1	3.1/47.0m			46
50		2.8			50
54			2.1		54
56				1.4	56
62				1.3	62
主臂长度37米 Boom length37m					
44	19	25	31	37	44
46	3.3/44.2m				46
48	3.1				48
48	3.0/47.0m				48
50		2.4/49.1m			50
52		2.3			52
54		2.2/52.7m	1.6		54
56			1.5		56
58			1.5		58
60					60
主臂长度40米 Boom length40m					
46	19	22	25	28	46
48	2.5/46.3m				48
48	2.4	2.1/48.7m			48
50	2.3/49.1m	2			50
52		2	1.7/51.2m		52
54			1.6	1.3/53.7m	54
56			1.6/54.9m	1.2	56
58				1.2/57.8m	58



主臂长度43米 Boom length43m					
48	19	22	25	28	48
50	2.0/46.4m				50
52	1.9	1.6/50.9m			52
52	1.9/51.2m	1.6			52
54		1.5	1.3/53.3m		54
56			1.2		56
58			1.2/57.0m		58
主臂长度46米 Boom length46m					
50	19	22	25	28	50
50	1.3/50.5				50
52		1.3			52
54	1.3/53.2m				54
56					56
56					56

载荷表说明

Notes for Load Chart

说明

1. 本起重机符合GB3811标准, 同时满足ISO4302,ISO4305标准。
2. 表中所示的额定总起重量是在水平坚硬地面上固定吊载工作时的值, 而额定总起重量是在倾翻载荷的78%以内, 及移动式起重机结构标准所确定的前方稳定度在1.15以内。
3. 实际起重量是以表中的额定总起重量中减去起重钩等一切吊具重量之后的值。
4. 可安装副臂的主起重臂长度为40—61m。
5. 安装副臂时, 主起重臂禁止安装120t钩。
6. 安装副臂或加长臂时, 主起重臂实际起重量为主起重臂额定载荷扣除下表所列的重量及主钩加副钩重量的值。

固定副臂和加长臂

13m副臂	1.5t	25m副臂	1.9t
19m副臂	1.7t	加长臂	0.4t

7. 可安装加长臂的主臂长度为16—61m。
8. 平衡重质量为40t。

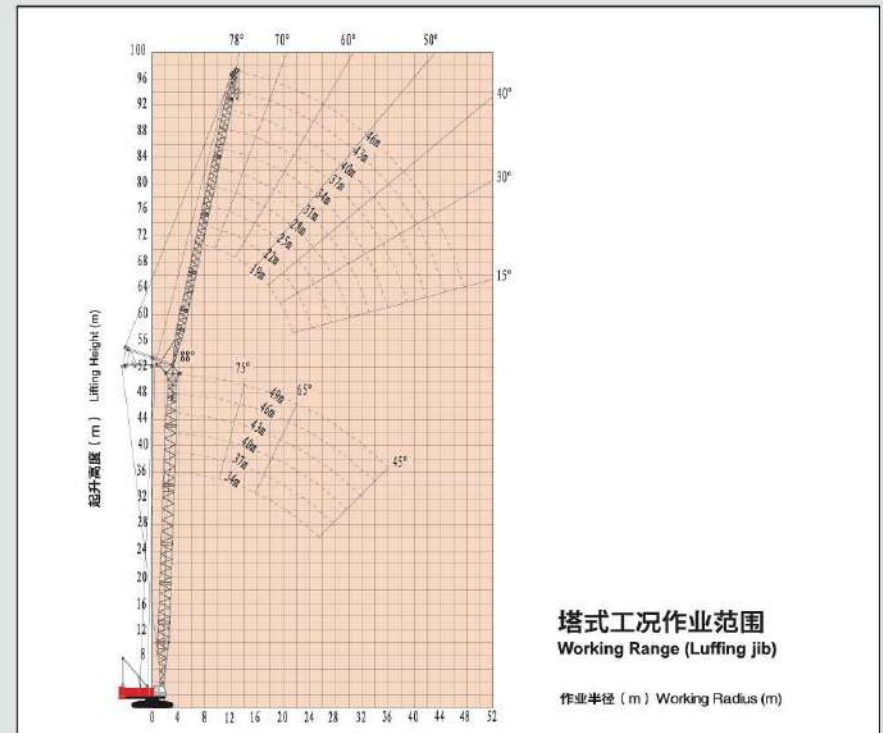
Notes:

1. Ratings according to GB3811, ISO4302 and ISO4305.
2. All capacities are for crane on firm and level surface. The rated total capacity is within 78% of tipping load and the front stability is within 1.15 as specified in the standard of the structure of mobile crane.
3. The actual lifting capacity is the rated load capacity deducting the weights of hooks and the slings.
4. When mounted with jib, the length of main boom is 40—61m.
5. When mounted with jib, it is forbidden to attach the 120t-hook to main boom.
6. When mounted with jib or runner, the actual lifting capacity of main boom is the rated load capacity deducting the weights of main and auxiliary hooks, fixed jib or runner.

Fixed jib and Runner

13m Fixed jib	1.5t	25m Fixed jib	1.9t
19m Fixed jib	1.7t	Runner	0.4t

7. When mounted with runner, the length of main boom is 16—61m.
8. The weight of counterweight is 40t.

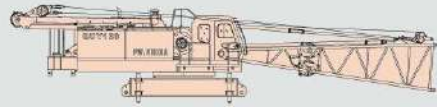




主要零部件运输尺寸

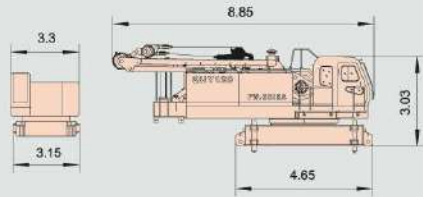
Dimensions for Transportation

尺寸单位: m Unit: m



本体	x1
重量	33500kg

Carbody	x1
Weight	33500kg



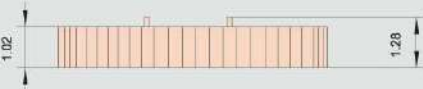
本体(拆基础臂架)	x1
长	8.85m
宽	3.15m
高	3.03m
重量	31000kg

Carbody(without boom feet)	x1
Length	8.85m
Width	3.15m
Height	3.03m
Weight	31000kg



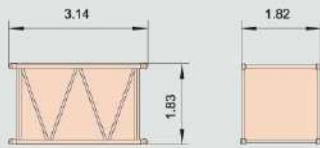
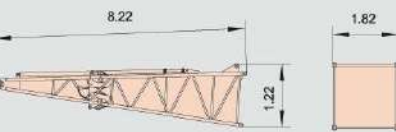
履带总成	x2
长	7.92m
宽	1.28m
高	1.20m
重量	16000kg

Crawler	x2
Length	7.92m
Width	1.28m
Height	1.20m
Weight	16000kg



基础臂节	x1
长	8.22m
宽	1.82m
高	1.22m
重量	2565kg

Boom foot	x1
Length	8.22m
Width	1.82m
Height	1.22m
Weight	2565kg



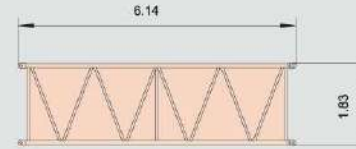
3m中间臂节	x1
长	3.14m
宽	1.82m
高	1.83m
重量	520kg

3m intermediate section	x1
Length	3.14m
Width	1.82m
Height	1.83m
Weight	520kg

主要零部件运输尺寸

Dimensions for Transportation

尺寸单位: m Unit: m



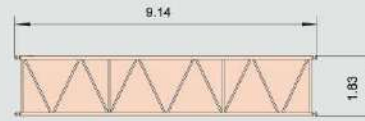
6m中间臂节	x2
长	6.14m
宽	1.82m
高	1.83m
重量	930kg

6m intermediate section	x2
Length	6.14m
Width	1.82m
Height	1.83m
Weight	930kg



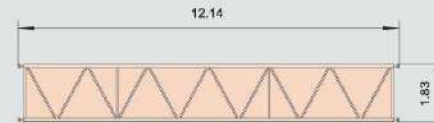
9m中间臂节(A)	x1
长	9.14m
宽	1.82m
高	1.94m
重量	1330kg

9m intermediate section(A)	x1
Length	9.14m
Width	1.82m
Height	1.94m
Weight	1330kg



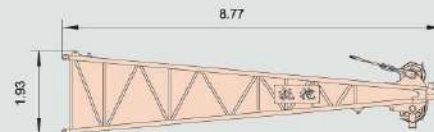
9m中间臂节(B)	x1
长	9.14m
宽	1.82m
高	1.83m
重量	920kg

9m intermediate section(B)	x1
Length	9.14m
Width	1.82m
Height	1.83m
Weight	920kg



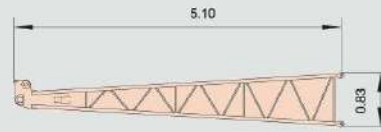
12m中间臂节	x2
长	12.14m
宽	1.82m
高	1.83m
重量	1140kg

12m intermediate section	x2
Length	12.14m
Width	1.82m
Height	1.83m
Weight	1140kg



顶部臂节	x1
长	8.77m
宽	1.82m
高	1.93m
重量	2090kg

Boom top	x1
Length	8.77m
Width	1.82m
Height	1.93m
Weight	2090kg



副臂基础臂节	x1
长	5.10m
宽	0.99m
高	0.83m
重量	220kg

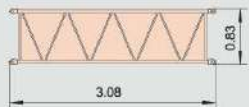
Fixed jib foot	x1
Length	5.10m
Width	0.99m
Height	0.83m
Weight	220kg



主要零部件运输尺寸

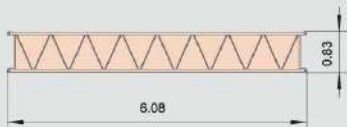
Dimensions for Transportation

尺寸单位: m Unit: m



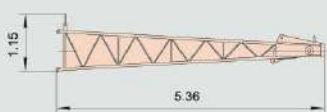
3m中间臂节	x1
长	3.08m
宽	1.01m
高	0.83m
重量	110kg

3m Intermediate section	x1
Length	3.08m
Width	1.01m
Height	0.83m
Weight	110kg



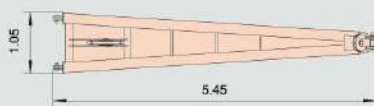
6m中间臂节	x2
长	6.08m
宽	1.01m
高	0.83m
重量	190kg

6m Intermediate section	x2
Length	6.08m
Width	1.01m
Height	0.83m
Weight	190kg



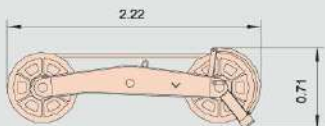
副臂顶部臂节	x1
长	5.36m
宽	1.01m
高	1.15m
重量	230kg

Fixed jib top	x1
Length	5.36m
Width	1.01m
Height	1.15m
Weight	230kg



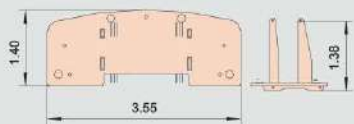
副臂撑架	x1
长	5.45m
宽	0.52m
高	1.05m
重量	440kg

Fixed jib mast	x1
Length	5.45m
Width	0.52m
Height	1.05m
Weight	440kg



加长臂	x1
长	2.22m
宽	0.44m
高	0.71m
重量	350kg

Runner	x1
Length	2.22m
Width	0.44m
Height	0.71m
Weight	350kg



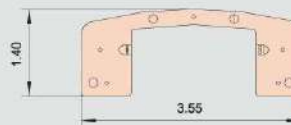
配重地板	x1
长	3.55m
宽	1.40m
高	1.38m
重量	4130kg

Counterweight tray	x1
Length	3.55m
Width	1.40m
Height	1.38m
Weight	4130kg

主要零部件运输尺寸

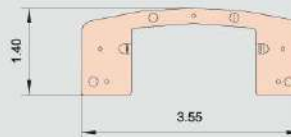
Dimensions for Transportation

尺寸单位: m Unit: m



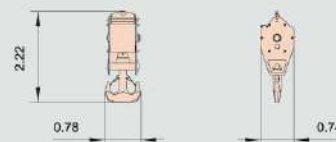
配重 I	x3
长	3.55m
宽	1.40m
高	0.45m
重量	7500kg

Counterweight I	x3
Length	3.55m
Width	1.40m
Height	0.45m
Weight	7500kg



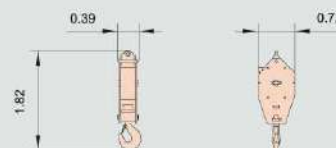
配重 II	x1
长	3.55m
宽	1.40m
高	0.37m
重量	5820kg

Counterweight II	x1
Length	3.55m
Width	1.40m
Height	0.37m
Weight	5820kg



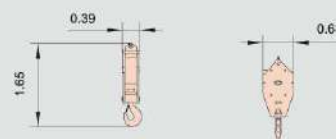
120吨吊钩	x1
长	2.22m
宽	0.78m
高	0.74m
重量	1852kg

120t Hook	x1
Length	2.22m
Width	0.78m
Height	0.74m
Weight	1852kg



50吨吊钩	x1
长	1.82m
宽	0.72m
高	0.39m
重量	695kg

50t Hook	x1
Length	1.82m
Width	0.72m
Height	0.39m
Weight	695kg



25吨吊钩	x1
长	1.65m
宽	0.68m
高	0.39m
重量	438kg

25t Hook	x1
Length	1.65m
Width	0.68m
Height	0.39m
Weight	438kg



9吨吊钩	x1
长	0.95m
宽	0.36m
高	0.36m
重量	246kg

9t Hook	x1
Length	0.95m
Width	0.36m
Height	0.36m
Weight	246kg

