

# ESCORTS

# TRX 2319

Pick-n-Carry Hydraulic Mobile Crane



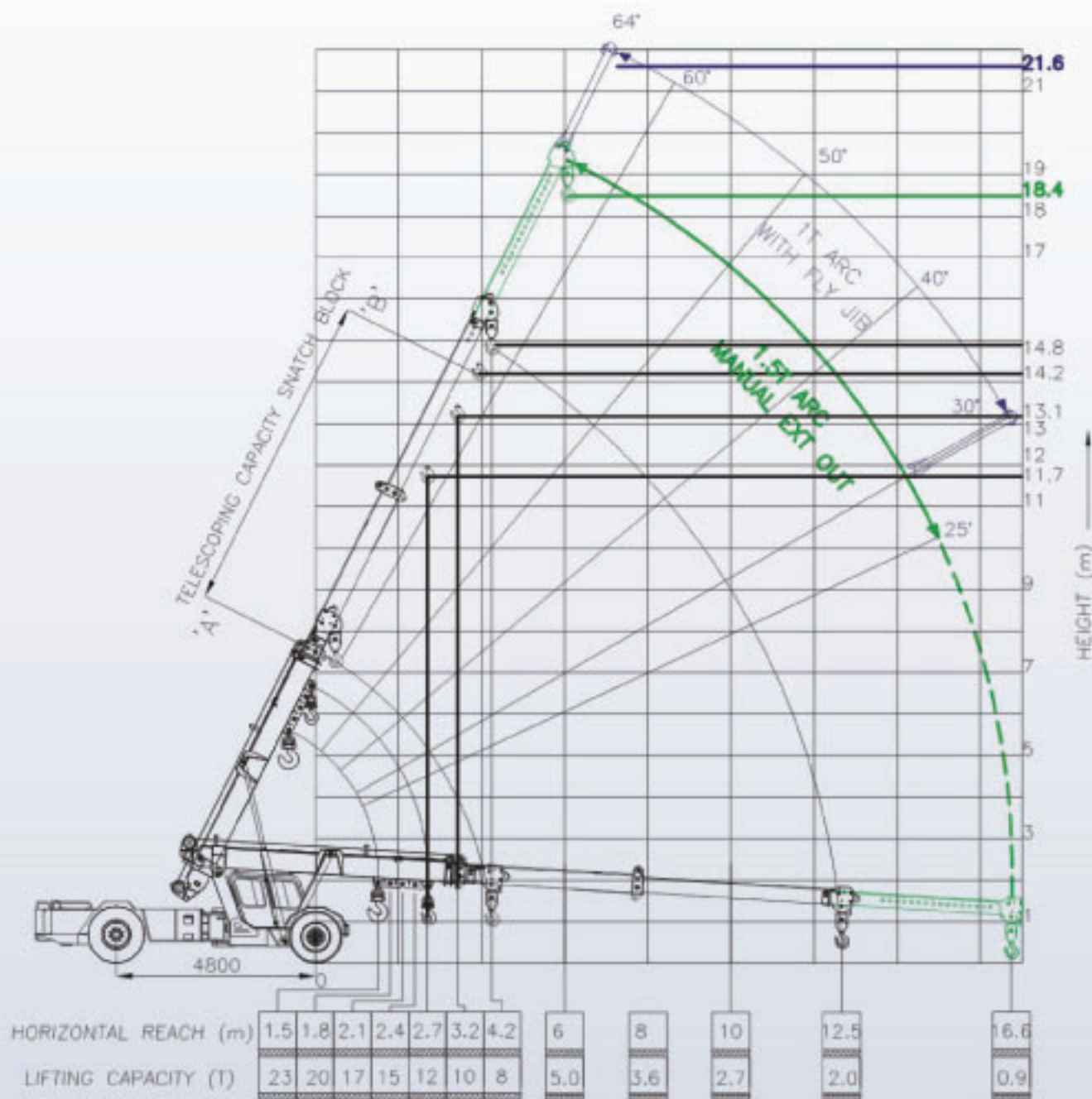
- Maximum Load Lifting Capacity  
23 T

- Maximum Boom Height  
19m / 22m with fly jib

- Maximum Horizontal Reach  
16.6m

- Hydrostatic Transmission  
with stepless variable speed upto 40 kmph

# Load Chart of ESCORTS TRX 2319



## FEATURES:

- Hydrostatic Transmission with stepless variable speeds
- Safe load indicator (SLI) system as a standard fitment
- Rope compensating snatch block for auto leveling of loads
- Maximum Travel speed of 40 km/hr (unladen) for faster coverage of long distances
- 4 part boom (3 part hydraulically powered + 4th part mechanically operated) for higher heights
- Front-end centrally mounted aesthetically designed spacious cabin for 2 persons with ergonomic controls
- Load deck at the rear
- Joystick controls

## NOTE:

- Maximum load lifting capacity : 23 T
- Maximum Boom Height : 19m / 22m with fly jib
- Maximum Horizontal Reach : 16.6m
- 12T can be lifted to the under hook height of 11.7m.
- 10T can be lifted to the under hook height of 13.1m.
- 9T can be lifted to the under hook height of 14.2m.
- 8T can be lifted to the under hook height of 14.8m.
- Telescopic capacity (laden) of snatch block from pt. 'A' to 'B' - 9T
- 1.5T can be lifted to the under hook height of 18.4m.
- 1T can be lifted to the under hook height of 21.6m.
- Tyres to be inflated with recommended air pressure.
- Lifting capacity is as per IS: 4573 - 1982 on a firm & level ground.
- Weights of chains, slings & tackles to be considered extra.

# Specifications ESCORTS TRX 2319

## Rated Capacity

- 23T @ 1.5m radius from the centre of front wheel
- 0.9T @ 16.6m from the centre of front wheel

## Engine

KIRLOSKAR 6R 1080 NA, 6 cylinder  
Water Cooled Diesel Engine  
Rated power for crane 122 BHP @ 2500 RPM  
or equivalent engine

## Transmission

- Drive 2 Wheel Drive
- Type Hydrostatic Transmission
- Travel Speed 40 Kmph (unladen condition)
- Gradeability 35 % unladen

## Steering

Fully powered orbital steering with twin double acting rams

- Type Articulated power steering, through steering wheel
- Articulation upto 35° on either side
- Turning Radius 8 m

## Brakes

- Service Fully air operated "S" cam dual circuit brakes on both axles
- Front Wheel Pneumatically assisted hydraulic brakes
- Rear Wheel Air Brakes
- Parking Spring Loaded Brake, Air-released on Rear Axle

## Track

- Front 2150 mm (center of twin wheels)
- Rear 2000 mm (center of wheels)
- Wheel Base 4800 mm

## Tyres

- Front 12.00x24-20 PR (Four Nos.)
- Rear 14x25-24 PR (Two Nos.)

## Axles

- Front Rigidly mounted on front frame
- Rear Drive axle, mounted on semielliptical springs

## Boom

- Telescoping Four Part Boom, 3 Part, hydraulically powered & fully synchronised 4th Part mechanically extended (Use 6 fall when mechanical Extension is retracted) (Use 4 fall when mechanical Extension is extended)
- Derricking Through double acting jacks

## Hoist Mechanism

- Hoist Hydraulic winch with Six/ Four falls  
Rope dia 13mm

## Hydraulic System

- Travel Pump Axial Piston Pump (Close Loop Circuit)
- Travel Motor Bent Axis Variable Displacement Motor (Close Loop Circuit)
- Craning and Steering Pump Tandem Vane Pump

## Control Valve

- Proportional control valve hydraulically actuated through Joy stick
- 3 spool double acting with a built in relief & auxiliary valves

## Filters

- High Pressure 10 micron in Travel Circuit while craning circuit has 25 micron full flow filter

## Electrical System

- Type 12V DC Single battery, Negative Earth

## Capacities

- Fuel Tank 180 Ltrs.
- Hydraulic Tank (Open circuit) 170 Ltrs.
- Hydraulic Tank (Closed circuit) 70 Ltrs.

## Operating Weight (Kg)

18200

## Axle Loading

- Rear Axle 9850 kg
- Front Axle 8350 kg

## Overall Dimensions

- Height 3100 mm
- Width 2500 mm
- Length 11160 mm

## Safety System

- Safe Load Indicator with hydraulic cut off
- Safety brakes on hoist
- Hose protection failure device
- Rope compensating snatch block

## Standard Accessories

- All Weather Cabin
- Front Bumper
- Reflectors
- Tools & Tackle Box
- Rear View Mirror
- Turn & Reverse Lamp
- Instrument Cluster
- Battery Cut-off

## Optional Accessories

- Fly Jib 2.6 M Length
- Fire Extinguisher
- Air Conditioned Cabin
- Extra Hooks
- Rhino Hook
- Stepney

All Dimensions and Weights are variable within +/- 5 %

| <b>Business Centres</b> | <b>Phone</b>                                   | <b>Fax</b>   |
|-------------------------|--|--------------|
| Ahmedabad               | 079-40063445                                   | 079-40063445 |
| Bangalore               | 080-23398809<br>080-23398812                   | 080-23396342 |
| Bhopal/Indore           | 0755-2551955<br>9826824111                     | 0755-2551955 |
| Bhubaneswar             | 0674-2588775<br>0674-2588627<br>0674-2588874   | 0674-2585627 |
| Chandigarh              | 0172-5017995                                   | 0172-5017995 |
| Chennai                 | 044-42153710<br>044-42153707                   | 044-42153715 |
| Guwahati                | 0361-2733246                                   |              |
| Jaipur                  | 0141-2760904<br>0141-5149433                   | 0141-2760904 |
| Kolkata                 | 033-24862027<br>033-24862028                   | 033-24863848 |
| Lucknow                 | 522-4003683                                    | 522-2371901  |
| Mumbai                  | 022-24218150<br>24218151<br>24218160, 24218161 | 022-24218153 |
| Nagpur                  | 0712-6450713                                   | 2567221      |
| New Delhi               | 011-26444821<br>26444873                       | 011-26444873 |
| Pune                    | 020-40089771                                   | 020-40089772 |
| Ranchi                  | 0651-2531340                                   | 0651-2531187 |
| Secunderabad            | 040-27842451                                   | 040-27842441 |
| Visakhapatnam           | 0891-2563235<br>0891-2504875                   | 0891-2560052 |



## **Escorts Construction Equipment Limited**

Plot No. 219, Sector-58, Ballabgarh, Faridabad-121007, Haryana, India

Tel: 91-129-2306300, Mobile: 91-9818552150

E-mail: [marketing@escorts-ecel.com](mailto:marketing@escorts-ecel.com) • Website: [www.ecel.com](http://www.ecel.com)