



ESCORTS F-15

Hydraulic Mobile Pick-n-Carry Crane



ESCORTS CONSTRUCTION EQUIPMENT LIMITED

Plot No: 219, Sector-58, Ballabgarh, Faridabad (Haryana) - 121 004, India

Tel.: (0129) 2306300/2306570, Fax: (0129) 2306463

E-mail: marketing@escorts-ecel.com, Website: www.ecel.com

• The information contained in this leaflet is intended to be of a general nature only. • We reserve the right to change specifications without notice. • All Dimensions and Weights are variable within +/- 5 %

U7/ MKTG/F15/10/08R

- Travel Long Distances on own Power
- Boom Height with Flyjib: 21m
- Heavy Duty Hoist Winch
- Front Mounted Cabin with Steering Wheel
- Slotted Boom with Self Compensating Snatch block
- New Technology Control Valve for Precision Handling
- 4 Wheel/ 2 Wheel Drive selector
- Dragging Winch with Outriggers (Optional)
- Safe Load Indicator with Hydraulic cutoff (Optional)

SPECIFICATIONS F-15

Rated Capacity

14 tonne at	1.50 m radius
900 Kg at	15.80 m radius
Max hook height	17.60 m

Vehicle Performance

Speed	max 40 kmph
Gradeability	40% unladen

Drive

4 wheel drive

Engine

Diesel engine of KOEL make, Model 4R 1040T Turbo charged water cooled, developing 110 hp @ 2500 rpm or equivalent engine.

Transmission

Synchromesh gearbox with auxillary gearbox
Speeds-8 forward and 2 reverse

Clutch

Single, dry type friction clutch plate

Brakes

Service: Fully air operated 'S' cam dual circuit brakes on front & rear axles
Parking: Air operated, spring actuated fail safe brakes

Axles

Front - rigidly mounted
Rear - mounted with two semielliptical springs

Tyres

8 nos. - 11x20 - 16 PR

Hydraulic system

Main pump of 46 cc/rev,
Control Valve - 3 spool double acting with a built in relief & auxillary valves

Electrical System

24 V, DC

Steering

Full power orbitrol with twin hydraulic double acting rams 40° articulation on either side

Boom

4 part boom, 3 part hydraulically powered & fully synchronised. 4th part power extended and manually pinned for safety

Hoist

Hydraulically operated with 4 falls
Built in safety brakes

Wheel Base

3.95 m

Dimensions

Overall length	9725 mm
Overall width	2450 mm
Overall height	3215 mm

Wheel Track

Front	1825 mm
Rear	1825 mm

Axle Loading

Front Axle	6315 kg
Rear Axle	9000 kg
Total	15315 kg

Turning Radius

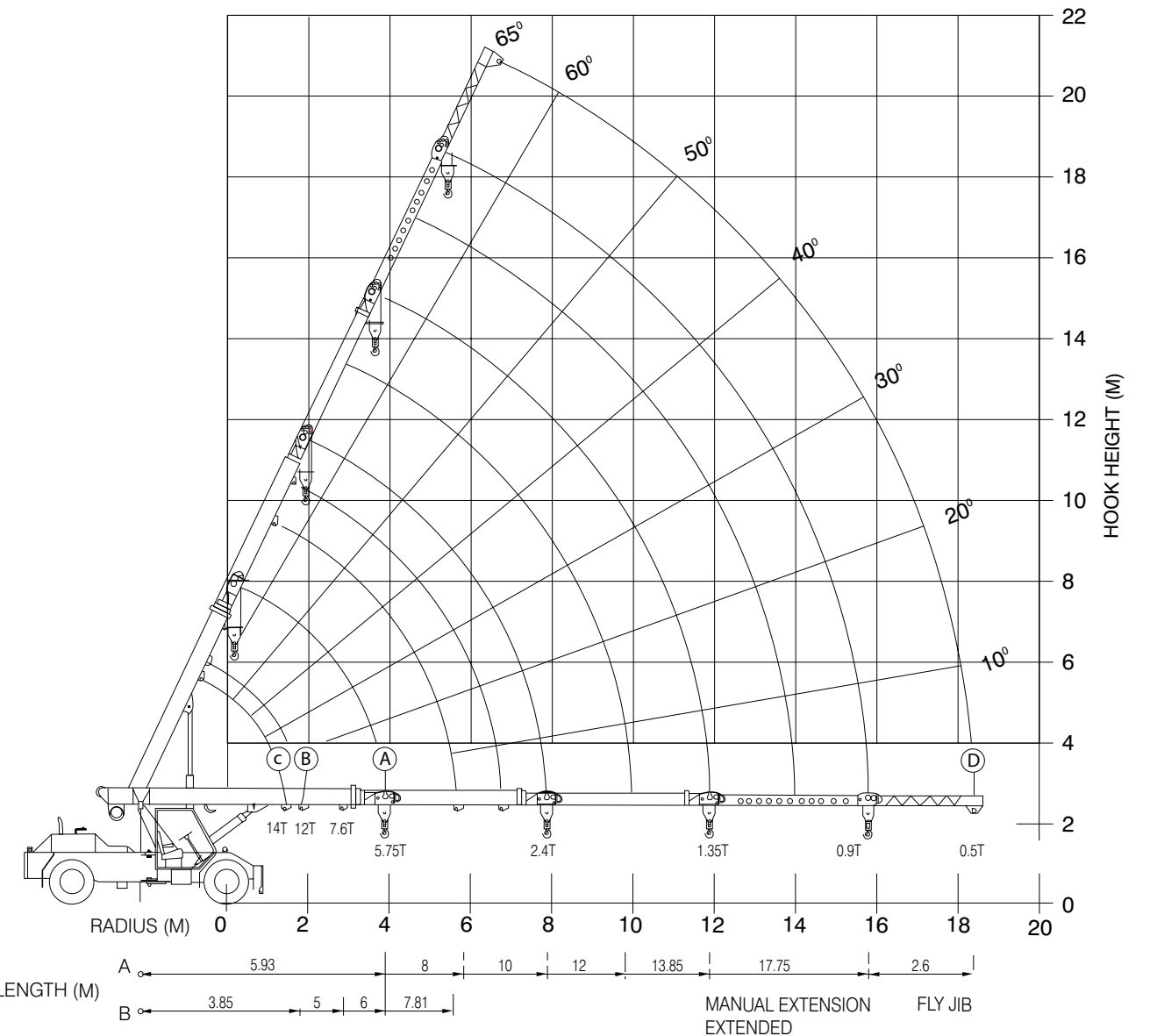
7.2 m

Standard Accessories

All weather cabin with unrestricted visibility

Optional Accessories

- 2.6 m fly jib
- Spare wheel
- Air conditioned cabin
- Safe load Indicator with Hydraulic Cutoff
- RHINO Hook
- Man carrying basket (275 kg)
- Additional cabin
- 4x2 Wheel Drive
- Outriggers
- Dragging Winch



RADIUS (M)	(A)						(B)				(E)				(D)	
	BOOM LENGTH IN METRES - MANUAL EXTENSION RETRACTED						PIVOT TO INNER LUG 1ST JIB EXTN. MANUAL EXTN. RETRACTED				BOOM PIVOT TO OUTER LUG 1ST JIB EXTN. MANUAL EXTN. RETRACTED				RADIUS (M)	FLY JIB (BOOM FULLY EXTENDED)
	5.93	8	10	12	13.85	17.75	3.85	5	6	7.81	4.97	6.5	7.5	8.93	6.4	750
2	7500	7500	7500				12000	11000	11000	10550	11000	10500	10000	7500	8.0	750
3	7500	7500	6900	5200				7000	7000	6700					10.9	700
4	5750	5700	5070	4500	3970				4800	4750					13.5	650
5		4400	4760	4000	3460	1680							3800	3700	15.6	600
6		3600	3525	3475	3100	1575								3000	17.1	550
7			2900	2900	2750	1475								2300	18.0	500
8			2400	2478	2400	1400									18.4	500
9				2130	2080	1320										
10					1775	1250										
11					1550	1180										
12					1350	1135										
13						1110										
16						900										
18																

(C)	
14T LUG	
BOOM FULLY RETRACTED	
RADIUS (M)	S.W.L (KG)
1.5	14000

- Radius is the horizontal Distance Measured from the centre of front wheel to the load point
- S.W.L. are based on 75% stability & strength
- S.W.L. are based on firm level ground with tyres 11x20 - 16 ply rating inflated to 115 PSI. Weight of hooks, blocks, slings & chain etc. included
- Lift & Carry - the S.W.L shall be carried with the minimum boom length & as close to the ground as possible at speeds not in excess of 2 kmph.
- Boom head mounted RHINO hook capacity - 6000 kg

All dimension are in mm and are variable within ± 5%