



ESCORTS

TRX 2319

Pick-n-Carry Hydraulic Mobile Crane



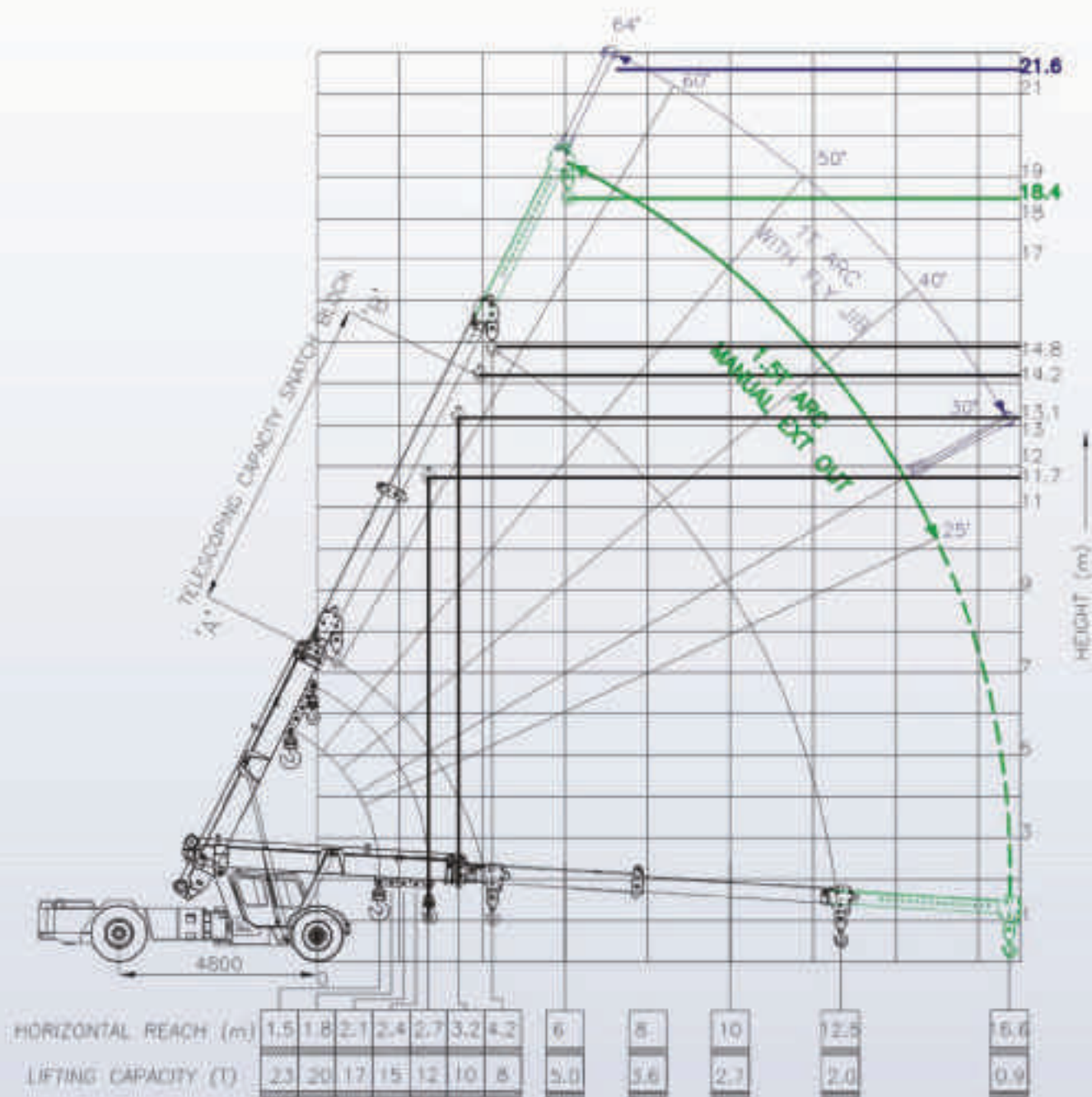
- Maximum Load Lifting Capacity
23 T

- Maximum Boom Height
19m / 22m with fly jib

- Maximum Horizontal Reach
16.6m

- Hydrostatic Transmission
with stepless variable speed upto 40 kmph

Load Chart of ESCORTS TRX 2319



FEATURES:

- Hydrostatic Transmission with stepless variable speeds
- Safe load indicator (SLI) system as a standard fitment
- Rope compensating snatch block for auto leveling of loads
- Maximum Travel speed of 40 km/hr (unladen) for faster coverage of long distances
- 4 part boom (3 part hydraulically powered + 4th part mechanically operated) for higher heights
- Front-end centrally mounted aesthetically designed spacious cabin for 2 persons with ergonomic controls
- Load deck at the rear
- Joystick controls

NOTE:

- Maximum load lifting capacity : 23 T
- Maximum Boom Height : 19m / 22m with fly jib
- Maximum Horizontal Reach : 16.6m
- 12T can be lifted to the under hook height of 11.7m.
- 10T can be lifted to the under hook height of 13.1m.
- 9T can be lifted to the under hook height of 14.2m.
- 8T can be lifted to the under hook height of 14.8m.
- Telescopic capacity (laden) of snatch block from pt. 'A' to 'B' - 9T
- 1.5T can be lifted to the under hook height of 18.4m.
- 1T can be lifted to the under hook height of 21.6m.
- Tyres to be inflated with recommended air pressure.
- Lifting capacity is as per IS: 4573 - 1982 on a firm & level ground.
- Weights of chains, slings & tackles to be considered extra.

Specifications ESCORTS TRX 2319

Rated Capacity

- 23T @ 1.5m radius from the centre of front wheel
- 0.9T @ 16.6m from the centre of front wheel

Engine

KIRLOSKAR 6R-1080 NA, 6 cylinder
Water Cooled Diesel Engine
Rated power for crane 122 BHP @ 2500 RPM
or equivalent engine

Transmission

- Drive: 2 Wheel Drive
- Type: Hydrostatic Transmission
- Travel Speed: 40 Km/h (unladen condition)
- Gradeability: 35% unladen

Steering

Fully powered orbital steering with twin double acting rams

- Type: Articulated power steering, through steering wheel
- Articulation: upto 35° on either side
- Turning Radius: 8m

Brakes

- Service: Fully air operated "S" cam dual circuit brakes on both axles
- Front Wheel: Pneumatically assisted hydraulic brakes
- Rear Wheel: Air Brakes
- Parking: Spring Loaded Brake, Air-released on Rear Axle

Track

- Front: 2150 mm (center of twin wheels)
- Rear: 2000 mm (center of wheels)
- Wheel Base: 4800 mm

Tyres

- Front: 12.00x24-20 PR (Four Nos.)
- Rear: 14x25-24 PR (Two Nos.)

Axles

- Front: Rigidly mounted on front frame
- Rear: Drive axle, mounted on semielliptical springs

Boom

- Telescoping: Four Part Boom, 3 Part, hydraulically powered & fully synchronised 4th Part mechanically extended (Use 6 fall when mechanical Extension is retracted) (Use 4 fall when mechanical Extension is extended)
- Derricking: Through double acting jacks

Hoist Mechanism

- Hoist: Hydraulic winch with Six/ Four falls
Rope dia 13mm

Hydraulic System

- Travel Pump: Axial Piston Pump (Close Loop Circuit)
- Travel Motor: Bent Axis Variable Displacement Motor (Close Loop Circuit)
- Craning and Steering Pump: Tandem Vane Pump

Control Valve

- Proportional control valve hydraulically actuated through Joystick
- 3 spool double acting with a built in relief & auxiliary valves

Filters

- High Pressure 10 micron in Travel Circuit while craning circuit has 25 micron full flow filter

Electrical System

- Type: 12V DC Single battery, Negative Earth

Capacities

- Fuel Tank: 180 Ltrs.
- Hydraulic Tank (Open circuit): 170 Ltrs.
- Hydraulic Tank (Closed circuit): 70 Ltrs.

Operating Weight (Kg)

18200

Axle Loading

- Rear Axle: 9850 kg
- Front Axle: 8350 kg

Overall Dimensions

- Height: 3100 mm
- Width: 2500 mm
- Length: 11160 mm

Safety System

- Safe Load Indicator with hydraulic cut off
- Safety brakes on hoist
- Hose protection failure device
- Rope compensating snatch block

Standard Accessories

- All Weather Cabin
- Front Bumper
- Reflectors
- Tools & Tackle Box
- Rear View Mirror
- Turn & Reverse Lamp
- Instrument Cluster
- Battery Cut-off

Optional Accessories

- Fly Jib 2.6 M Length
- Fire Extinguisher
- Air Conditioned Cabin
- Extra Hooks
- Rhino Hook
- Stapney

All Dimensions and Weights are variable within +/- 5%

Business Centres	Phone	Fax
Ahmedabad	079-40063445	079-40063445
Bangalore	080-23398809 080-23398812	080-23396342
Bhopal/Indore	0755-2551955 9826824111	0755-2551955
Bhubaneswar	0674-2588775 0674-2588627 0674-2588874	0674-2585627
Chandigarh	0172-5017995	0172-5017995
Chennai	044-42153710 044-42153707	044-42153715
Guwahati	0361-2733246	
Jaipur	0141-2760904 0141-5149433	0141-2760904
Kolkata	033-24862027 033-24862028	033-24863848
Lucknow	522-4003683	522-2371901
Mumbai	022-24218150 24218151 24218160, 24218161	022-24218153
Nagpur	0712-6450713	2567221
New Delhi	011-26444821 26444873	011-26444873
Pune	020-40089771	020-40089772
Ranchi	0651-2531340	0651-2531187
Secunderabad	040-27842451	040-27842441
Visakhapatnam	0891-2563235 0891-2504875	0891-2560052



Escorts Construction Equipment Limited

Plot No. 219, Sector-58, Ballabgarh, Faridabad-121007, Haryana, India

Tel: 91-129-2306300, Mobile: 91-9818552150

E-mail: marketing@escorts-ecel.com • Website: www.ecel.com